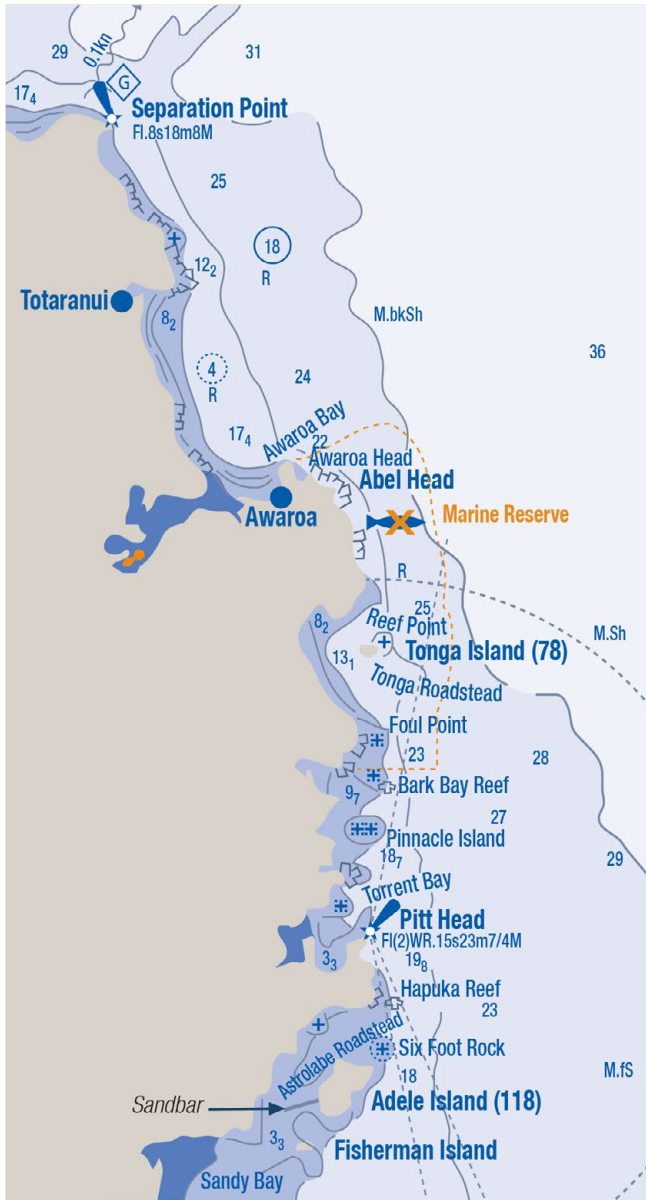




Nautical Maps	1
About New Zealand	2
Nelson Services	3
Sailing Around Nelson	4

Sailing and Marina Information	7
Local Marine Radio	8
Fire Response Plan	9
Marina Rules	11

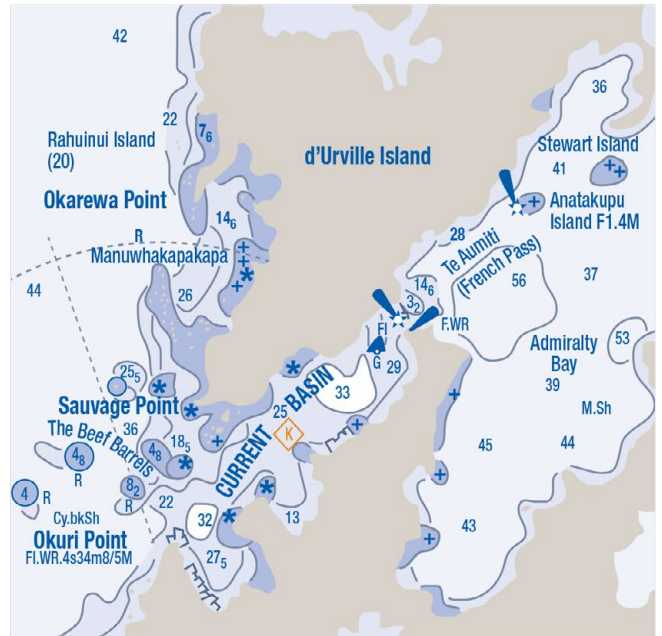
→ abel tasman coastline



→ nelson tasman climate

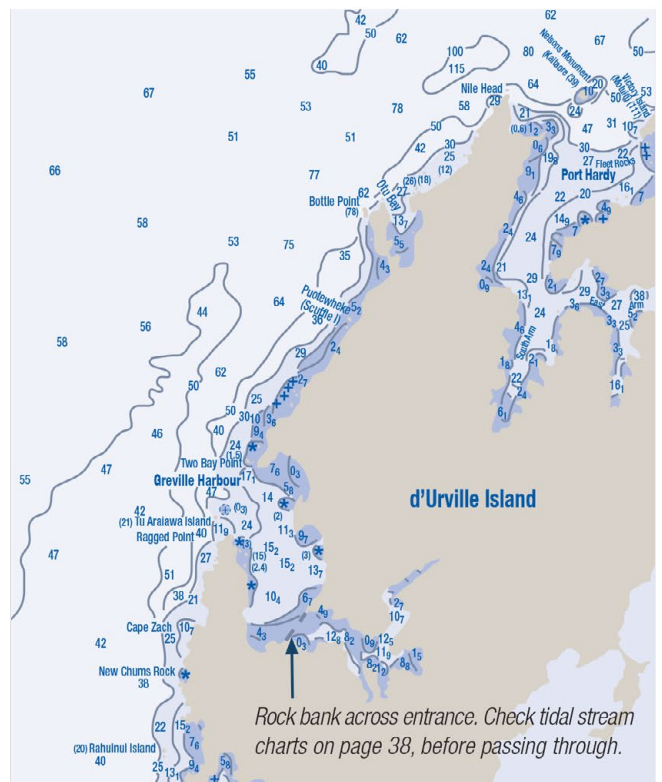
	Mean daily max. temps		Mean daily min. temps		Average rain days per month (1mm)
	°C	°F	°C	°F	
Summer (Dec-Feb)	22	72	12	54	7
Autumn (Mar-May)	18	62	8	46	7
Winter (Jun-Aug)	13	55	2	36	8
Spring (Sep-Nov)	17	63	8	46	9

→ french pass



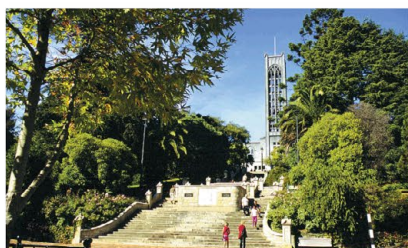
Note: Check tidal stream charts on page 38.

→ greville harbour and port hardy



Rock bank across entrance. Check tidal stream charts on page 38, before passing through.

→ about nelson



Nelson is one of New Zealand's most popular holiday destinations. The city is the urban centre of the region and has many historic buildings, a small central business district that is easy to get around, the Maitai River, Tahunanui Beach, Queens Gardens, and a stunning outlook from any vantage point to Tasman Bay and the distant Mount Arthur Ranges.

Richmond, about 20 minutes drive from Nelson, is a fast-growing retail and residential centre and the gateway to the Tasman district, which is productive in both horticulture and forestry. There are many picturesque wineries, olive plantations, farms and apple orchards en route to Mapua, Motueka and Golden Bay.

what's in a name?

The Māori name for Nelson, 'Whakatu', has several interpretations. Waka is a Māori canoe and Whakatu may mean a place where a chief's waka was stood on end to mark his burial place, though 'upright canoe' could also refer to the wrecked migratory waka from Hawaiki that ran onto Nelson's Boulder Bank in a storm in 1200.

→ for more info

On leisure and recreation visit the official regional tourism organisation for the region, Nelson Tasman Tourism, www.nelsonnz.com or Nelson City Council at www.nelson.govt.nz.

→ quick facts

General

- Nelson is a seaside city, centrally located in New Zealand at the top of the South Island. Latitude and longitude for Nelson are NZ: latitude 41° 15.63'S, longitude 173° 16.85'E.
- Proximity - 80 minutes flying time from Auckland, 30 minutes flying time from Wellington.
- Nelson has the highest annual sunshine hours in New Zealand at 2,420 hours.
- Population: Nelson city has around 43,000 people and the greater Nelson/Tasman region has about 88,000 people.

Industry

- The major regional industries are fishing, forestry, tourism, agriculture and horticulture.
- In total, Nelson fishing interests hold around a third of New Zealand's 586,011 tonnes of sustainable catching rights.
- Local fishing companies have also extended their operations into the international arena. Nelson-based Sealord Group has companies with world-wide fishing, processing and marketing networks.
- Nelson boasts the largest fishing port in Australasia, catering for a fleet of fishing vessels from small local inshore boats to large factory trawlers.
- Port Nelson is a busy regional port, handling 2.5 million tonnes of cargo annually, including pipfruit, seafood and forest products.
- Port Nelson has a super-yacht berth for larger vessels.
- The region has the fourth busiest commercial airport in New Zealand, located just ten minutes drive from the city centre.

Lifestyle

- Nelson Marina has nearly 600 berths for yachts and boats.
- Nelson is 90-minutes drive from three beautiful and diverse national parks. The Nelson Lakes National Park, Kahurangi National Park, and the famous Abel Tasman National Park with 22,350 hectares of native bush and golden sand beaches, an idyllic location for sailing and boating.
- Enjoy more than 500 choices in accommodation from boutique bed and breakfasts to luxury lodges.
- Nelson has 350 working artists plus art galleries, cafés, restaurants, vineyards, more than 20 wineries and lots of outdoor recreation opportunities from sea kayaking to bush walking, rock climbing, fishing, rafting, jet boating and hunting.
- Picton, gateway to the Marlborough Sounds with numerous coves and inlets, is a two hour drive from Nelson. The Sounds are also accessible by boat, via French Pass.

nelson services



Nelson's climate and lifestyle attractions give it a better range of services than the average provincial centre.

education

Nelson and Tasman have a total of 59 schools, eight of which are secondary, covering Golden Bay, Mapua, Motueka, Tapawera, Richmond and Nelson city.

Accredited New Zealand schools can accept international fee-paying students on a short-term basis, unlike many other countries. There are also many preschool facilities that will take children who are new to the area.

For details of individual schools, refer to the Te Kete Ipurangi (TKI) Internet site at www.tki.org.nz/e/schools/

tertiary education and courses

If you want to study or pursue a hobby while staying in Nelson, check out the Nelson Marlborough Institute of Technology's short course programme. Courses range from art and design, aviation, business to barrista and much more.

For more information visit www.nmit.ac.nz. Local secondary schools also offer adult education courses.

health

Nelson Hospital

Nelson Hospital, an acute, 24-hour, seven-day-a-week base hospital offers medical, surgical, obstetric, maternity, child health, emergency and oral health services.

For more information visit www.nmdhb.govt.nz
Phone: 03 546 1800.

Nelson Region After Hours Duty Doctor

is a central facility that is open 8am-10pm with a 24-hour duty doctor, at 96 Waimea Road.

Phone: 03 546 8881.

emergencies

Police, Fire and Ambulance

Phone: 111.



transport

Nelson Airport

Nelson Regional Airport is New Zealand's fourth busiest with Air New Zealand Link as the main scheduled passenger carrier. There are also companies offering helicopter and fixed-wing charter flights.

To book flights go to www.airnewzealand.co.nz.

wheels

Get mobile with a rental car from one of several reputable hire firms. To hire a vehicle look in the Yellow Pages.

nelson city centre map key

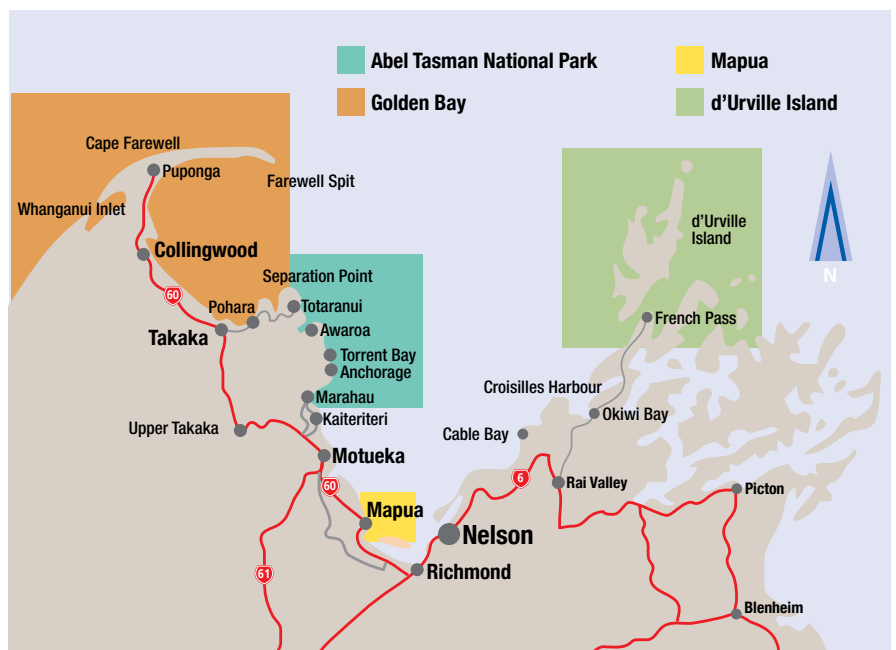
- 1 i-SITE Visitor Information
- 2 Elma Turner Library
- 3 Supermarkets
- 4 Nelson City Council
- 5 State Cinema 6
- 6 Nelson Market (Sat & Sun)
- 7 Nelson Provincial Museum
- 8 Nelson Cathedral
- 9 Historic South Street
- 10 Nelson School of Music
- 11 NMIT
- 12 Suter Art Gallery
- 13 Police

→ sailing around nelson

“ This is a fabulous cruising area. It's as good a cruising area as any part of New Zealand. You come out of the marina and it doesn't matter where the wind is from. If it's one way, you can head to Abel Tasman, and if it's the other, you can go to the Sounds. And they're both only a few hours away ”

Kiwi yachtsman Chris Bouzaid

→ cruising areas



→ abel tasman national park

A half day's sail will take you to the Abel Tasman National Park where you can anchor in any number of bays. The most popular overnight anchorages include Anchorage near Torrent Bay and Adele Island inside the Astrolabe Roadstead. There are several estuaries along the coastline, including Torrent Bay, Mosquito Bay and Frenchman's Cove, where flat-bottomed or multi-hulls can enter at high tide and beach between tides. Allow around 6 - 7 hours sailing time from the Cut to Pitt Head (29 nm).

The Abel Tasman National Park is the smallest national park in New Zealand. Its 22,350 hectares extend along a beautiful coastline of sandy, bush-wrapped beaches between rocky headlands and stretches of estuary rich in bird life.

The park buzzes with activity in summer but is a year-round attraction. In winter, frosty mornings usually give way to sunny, calm days and empty beaches.





→ mapua

Mapua sits at the mouth of the Waimea Inlet, the largest estuary in the South Island.

Getting into Mapua by sailboat is tricky - talk to a local about tides and channel markings before attempting this trip.

Stop off at the historic Mapua Wharf - it's still operational and is also the centre of a thriving café and restaurant scene.

→ golden bay

Golden Bay lies beyond Separation Point and Abel Tasman National Park, sheltered by Farewell Spit. There are mooring facilities at Port Tarakohe and within a new marina at the port.

About 1,100 people live in the main town of Takaka, the gateway to Golden Bay beaches and the northern entry of the Abel Tasman National Park. Just out of town are the famously clear Waikoropupu Springs. Takaka is also the closest town to Paynes Ford, which has some of the best limestone crag climbing in Australasia. Golden Bay is known for its artists and alternative lifestylers who add interest and a strong sense of community. There are launching ramps for small craft at Totoranui, Tarakohe and Pohara.



PHOTO: STIRLING IMAGES

→ collingwood

A seaside township of around 300 people, with a small tidal harbour, on the west side of Golden Bay. Collingwood is the base for guided trips to Farewell Spit, an internationally important bird sanctuary. Every spring, thousands of waders, including godwits, knots, curlews and turnstones arrive from Siberia and Alaska to join other birds that are permanent residents at the spit.

Access is restricted to protect the birds, but there are walking tracks to the base of the dunes, and commercial four-wheel-drive tours to the lighthouse.

Whanganui (Westhaven) Inlet is a large estuary on the West Coast, protected as a reserve with its surrounding coastal forests.



PHOTO: STIRLING IMAGES

→ sailing around nelson



→ marine reserves

New Zealand has several marine reserves around the coast where sea life is protected. They are managed by the Department of Conservation.

You can take your boat into the reserve area, but please observe speed limits and watch for divers. Avoid anchoring as this disturbs the seafloor.

Tonga Island Marine Reserve is within the Abel Tasman National Park and was created in 1993. It has granite reefs inhabited by invertebrates and reef fish. The reserve is the ideal place to watch the seals, but be sure to observe the rules about not landing on Tonga Island itself.



PHOTO: STIRLING IMAGES

Cable Bay and the Horoirangi Marine Reserve lie just 12km north of Nelson city. The reserve extends northeast from the Glen to the southern headland of Cable Bay, and offshore for one nautical mile. Horoirangi is the highest peak overlooking the reserve. Walking, exploring the intertidal zone, kayaking, snorkelling, diving and boating are all popular recreation activities in the reserve.

d'Urville island

It is a day sail (30-40 nautical miles, 6 - 8 hours) from Nelson to the fishing grounds of d'Urville Island, with a popular stop-over at the sheltered anchorage at Croisilles Harbour between Nelson and d'Urville.

At d'Urville Island the two main all-weather safe anchorages are Port Hardy, and Mill Arm within Greville Harbour on the western flank of the island. These anchorages are open to weather from the north and west, so it's important to check marine forecasts before heading that way (if in doubt stop at Croisilles).

The entrance to Greville Harbour is through a small gap in a boulder bank, and is marked with port and starboard navigation markers, but it's very tidal so caution is needed when entering or leaving. The port beacon should be given clearance of at least 10 metres and the starboard beacon 20-30 metres. If you run aground with the tide against you, it is easy to get off but if the tide is behind you, it is easy to get stuck. It is reported that there is only two metre maximum depth at low water. Vessels with larger draughts should be aware and consider passing through closer to high tide. The Mill Arm is the most used anchorage in Greville and parts of it give shelter from all winds. The northern end gives good holding on a mud bottom but can be prone to gusts.

Port Hardy: The main part of the harbour is between Trafalgar Point and Victory Islet, where there is deepwater close to most points. A rock has been reported southeast of Nelson's Monument and this area should be given a clearance of 100 metres.

The area north of Victory (Moutiti) Islets is too open for anchorage except in calm weather or light winds from E to S. About one mile north of Victory Islets are Rakiura Rocks.

Another popular anchorage at d'Urville is Catherine Cove - a reasonably protected spot as you venture up the island's eastern side. To get there from Nelson, it's best to navigate French Pass - the narrow stretch of water between d'Urville and the mainland. This is also extremely tidal and is best crossed during slack tide or with a favourable tide and under engine. When the tide is flowing strongly be prepared for sudden sheering caused by whirlpools. Unless you are experienced do not attempt to pass through against a strong adverse flow, and in that situation your vessel needs to be capable of 10 knots under engine. Avoid crossing during peak flows, and seek local advice.

d'Urville Island is a good stop-over before venturing further into the Marlborough Sounds, with its wide range of cruising options and anchorages such as Tennyson Inlet in Pelorus Sound, which offers a protected anchorage.

Note that Tory Channel in Marlborough's Queen Charlotte Sound is the inter-island ferry route and a 'narrow channel' in maritime law, meaning you must declare your intention on VHF channels 16 and 19 before entering the area, keep to the starboard sides of channel, avoid anchoring and give way to vessels over 45m long.



→ sailing & marina information

The sheltered waters of Nelson Haven are home to Port Nelson and the Nelson Marina. Nelson City Council operates the 580-berth marina. Boat owners from Nelson, around New Zealand and even some from overseas have taken up nearly all the marina berth licences; drawn by the excellent facilities, the attractions of the Nelson region and its central location. Berths are rented, not purchased.

The marina is in a sheltered area and is not subject to sea surges. Nelson city has one of the lowest crime rates in Australasia and marina management has a security system in place to help protect vessels. The marina is surrounded by marine-related businesses and Nelson is a great place to spend time while your boat undergoes repairs.

Berths

The Nelson marina has berths for boats from 8 to 26 meters. A number of berths on pontoon A&B have 64 amp three phase and 32 amp three phase connections the majority of other connections at Nelson Marina are 16 amp three phase. All connections are a minimum of IP66 so please ensure you have the appropriate connectors in

place. All floating berths have a clean water supply. There is a super-yacht berth at Port Nelson.

Visitors

Nelson Marina welcomes visitors and has set aside a number of berths on F pontoon specifically for that purpose. For berth availability call the Marina Supervisor on 03 5467768 or e-mail on marina@nelmac.co.nz. The marina can take advance bookings from visiting vessels but will in most cases require payment at time of booking because plans can change significantly under the influence of weather or other variables. Another option is to make a booking 2 or 3 days out from your expected time of arrival which reduces the possibility of plans being changed at short notice. If you are unable to pre-book come alongside the end of F pontoon and report to the Marina Supervisor's office. On the odd occasion that someone might not be there please ring the contact numbers listed on the board.

Marina Facilities

Access to facilities is by proximity card for which a \$20 deposit is required. There are modern showers and toilets at Vickerman Street and Akersten Street. Both blocks have accessible toilets and a laundry. There

is a pump-out facility for those wishing to discharge holding tanks.

Repairs

There is a haul-out facility managed privately and a wide array of marine based businesses locally from electricians to marine engineers.

Things to do

The marina has a restaurant/bar on Vickerman Street with further cafés; bars; restaurants; cinema; and the central business district within a 20 minute walk of the marina along the Maitai walkway. Nelson is becoming something of a Mecca for cycling and mountain-biking; has a thriving craft brewing industry; together with a range of wineries. The excellent climate and range of cafés and bars provides a Mediterranean feel and the Saturday market provides an excellent opportunity to purchase a unique gift for those remaining at home. (contact details below). As the weather often changes people's plans, the marina does not take advance bookings. An informal booking two or three days out from your ETA works best. If you are unable to make prior arrangements, come alongside the end of D pontoon and report to the Marina Supervisor's office. If no one is there, please call the listed contact numbers.

→ berth layout



Contact: Marina Supervisor
Phone: 03 546 7768
Email: marina@nelmac.co.nz

→ local marine radio



Nelson Marine Radio operates a weather, safety and incoming message service on VHF Martine Repeater Channel MM28 (Tasman Bay) and MM60 (Golden Bay, West Coast) at 0810–0820, 1310–1320 and 1810–1830 NZDT and NZST.

Nelson Marine Radio also operates high frequency SSB channel 4417kHz with a broadcast of the marine weather forecast from 0840–0900 and 1820–1840 ZDT, with space for calling. It is a good safety measure for vessels in Nelson waters to let the Marine Radio know their whereabouts. Contact Graeme Wilson 0800 081 466.

Join your local Marine Radio Association and use these channels with a clear conscience.

Port Nelson Ltd: Maintains a listening watch on Channels MM16 & MM12 primarily for use in the day to day

management of the port.

Marlborough Marine Radio: Operates a similar service to Nelson, focusing primarily on Marlborough Sounds coverage.

Marine VHF Repeater Channels MM5 (French Pass), MM65 Pelorus Sound, MM63 Queen Charlotte Sound and MM1 Greater Marlborough Sounds.

NZ Maritime Radio: Operates a continuous listening watch on the International Calling and Distress Channel 16 from the following sites and with associated working channels: Farewell MM68, d’Urville Island MM67, Picton MM68 and Wellington MM71.

Coastal Warnings and Weather Bulletins: 0133, 0533, 0733, 1033, 1333, 1733, and 2133 NZDT and NZST.

Royal NZ Coast Guard: Continuous Weather Broadcast Channel MM22 located at Mt Campbell.

→ marine forecast schedule

Time	Channel
0133	67 68 71
0533	67 68 71
0733	67 68 71
0810	28 60
1033	67 68 71
1310	28 60
1333	67 68 71
1733	67 68 71
1810	28 60
2133	67 68 71

→ radio frequencies



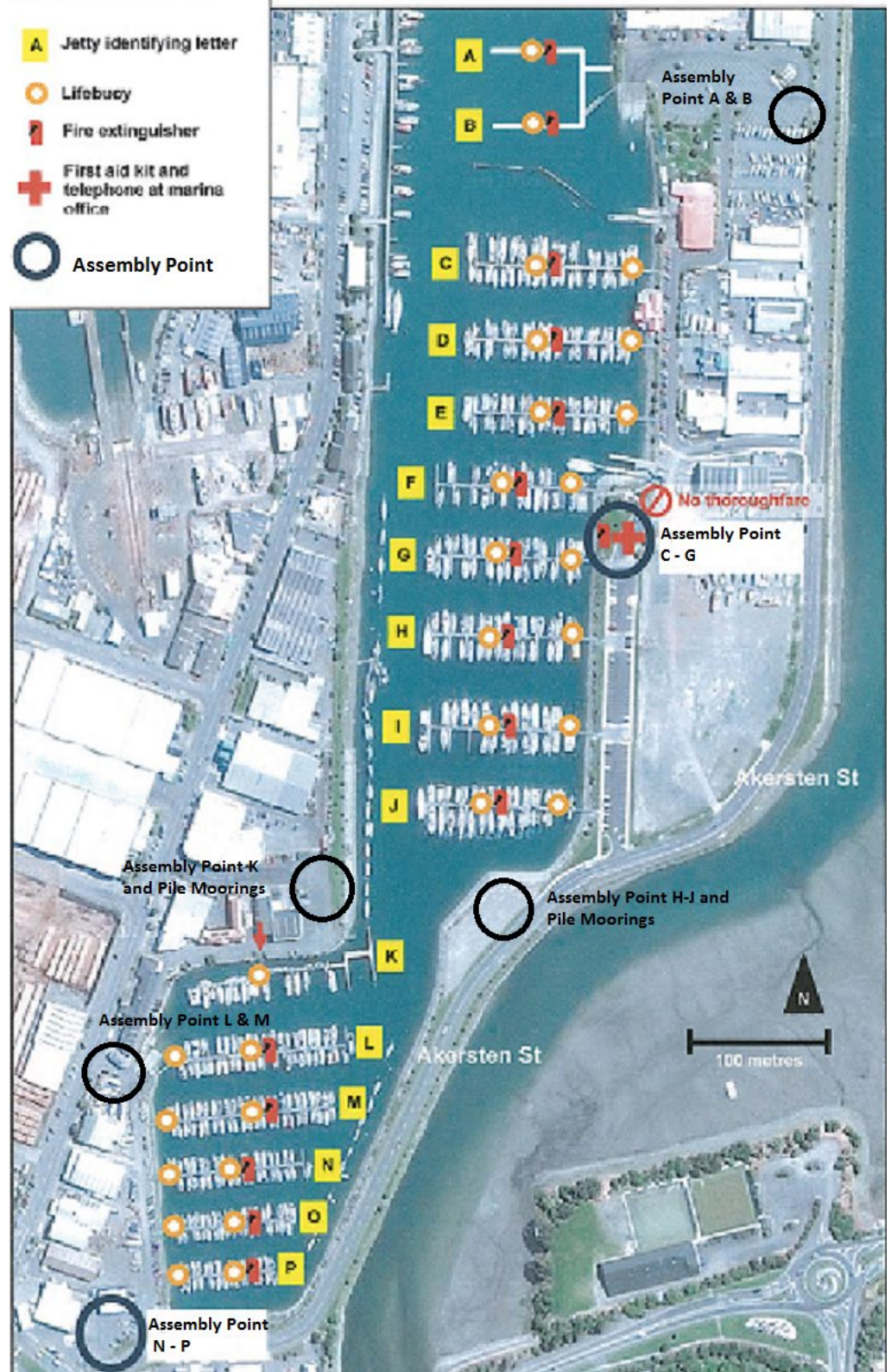
→ contact

Nelson Marine Radio
 Sandy Hendren
 Phone: 03 528 7629
 Email: sandy@hendren.co.nz

→ fire response plan



FIRE EVACUATION / ASSEMBLY POINTS





→ fire response plan (con't)

INITIAL RESPONSE

Notify Fire Brigade 111

State exact location of fire including –

- Which side of the Marina (Akersten Street or Vickerman Street)
- Pontoon
- Berth number

Evacuate

Evacuate affected pontoon to the relevant assembly area
(See 'Fire Evacuation/ Assembly Points Plan' attached)

Evacuate additional pontoons as per the matrix below

LOCATION OF FIRE	ALSO EVACUATE
Pontoon A	B
Pontoon B	A
Pontoon C	D
Pontoon D	C & E
Pontoon E	D & F
Pontoon F	E & G plus Vickerman Piles
Pontoon G	F & H plus Vickerman Piles
Pontoon H	G & I plus Vickerman Piles
Pontoon I	H & J plus Vickerman Piles
Pontoon J	I plus Vickerman Piles
Pontoon K	L plus Vickerman Piles
Pontoon L	K & M plus Akersten Piles
Pontoon M	L & N plus Akersten Piles
Pontoon N	M & O plus Akersten Piles
Pontoon O	N & P plus Akersten Piles
Pontoon P	O Plus Akersten Piles
Pile Moorings (Akersten Street)	Pontoons K - P
Pile Moorings (Vickerman Street)	Pontoons F - J



→ marina rules

The following rules have been established to provide for the efficient and harmonious operation of the Marina and for the safety of the berth-holders and visitors to the Marina.

1. Bylaws

All persons are required to obey all bylaws that may at any time be in force and as may be amended from time to time at all times whilst in Nelson Marina.

2. Obstruction of Entrances

No person shall obstruct any of the entrances to the Marina or use them for any purpose other than access to and from the Marina.

3. Berth lines

- i) All berth lines will be sufficient to meet the current industry standard, for the purpose of berthing vessels; shall be of sufficient strength; and secure safely a vessel of the size and weight allocated to the berth.
- ii) Where required by the Marina Manager the berth-holder will pay the cost of fixing, repairing and replacing any lines that fail the inspection of the Marina Manager.
- iii) Should the berth lines prove to be inadequate to secure a vessel all liability rests with the berth-holder.
- iv) No person shall interfere with any berthing line without good cause relating to safety of the vessel or safety of other vessels or persons unless authorised by the Marina Manager.
- v) The berth-holder issued pursuant to this agreement shall ensure that all halyards, lines, ropes, rigging and sheets on the licensee's vessel whilst berthed in the Marina are secured so that they shall not create any excessive noise, or hazards.

4. Services (means power, water and any other services provided for the use and benefit of the Berth-holder in the Marina)

- i) Persons may use the Services provided for them on an occasional basis only.
- ii) If a person requires more regular use of any services then such use shall be subject to the prior written approval of the Marina Manager which may make an extra charge to cover the costs of providing such Services.
- iii) No person shall use any Services for a purpose for which it was not designed.

5. Navigation Area

No person shall moor or navigate any vessel within the Navigation Area so as to create a danger, impediment, obstacle or inconvenience to any other vessel.

6. Security

Berth-holders shall take all reasonable steps to protect any vessel occupying the Berth from theft and vandalism and shall keep all hatches and other openings closed and securely fastened when such vessel is not in use.



marina rules (con't)

7. Fire Hazards

Persons shall not do anything in the Marina which creates a fire hazard or which may contravene the regulations or bylaws of any Authority and, without limitation, shall not use fire fighting equipment supplied by the Marina Manager for any purpose other than the fighting of fires.

8. Dangerous Goods

No person shall bring into, store or use within the Marina any chemicals, inflammable gases, fluids or substances except in the ordinary course of using such items for recreational purposes.

9. Nuisance

- i) No person shall make any improper noise or interfere in any way with other persons lawfully in the Marina.
- ii) Noise shall be kept to a minimum at all times and no person shall create a nuisance by the use of television, radio, musical apparatus, or any other form of sound reproduction.
- iii) No person shall on or about a mooring or on or about any vessel occupying a mooring use abusive or improper language
- iv) No person shall commit any act calculated to or likely to provoke or result in a breach of the peace or do or omit to do anything constituting or likely to constitute a public nuisance.
- v) No unlawful activities shall be conducted from the marina.

10. Domestic Rubbish

- i) No person shall deposit any domestic rubbish or useless property in the Marina or upon Marina structures.
- ii) All rubbish shall be deposited in the receptacles provided.

11. Discharge of Pollutants, Litter and Rubbish

- i) No person shall discharge any poisonous, noxious, dangerous or offensive substance or thing into or onto the Marina and shall comply in all respects with the provisions of the Resource Management Act 1991 in respect to the use and occupation of the marina.
- ii) In particular, but without limitation, no person shall discharge any sewage or otherwise empty any latrines into the waters of the Marina or otherwise dispose of any garbage, oil, fuel or other material whatsoever into the Marina except into containers provided by the Marina Manager. Or do anything / fail to do anything that would cause deterioration of the waters of the Marina or the waters adjacent thereto.
- iii) No person shall in any part of the Marina:
 - (a) break or cause to be broken or throw or abandon, cast or leave, whether broken or not any glass or pottery object, tins, bottles, paper, paper wrappings, plastic bottles, bags or containers, plastic sheet, litter, rubbish, oil or other articles or thing likely to be unsightly or to cause any nuisance or danger to public health or safety;
 - (b) scale, clean or gut any fish or throw cast or leave or deposit any fish, or any portion of a fish or a carcass of any dead animal, or fowl or any vegetable matter likely to cause a nuisance, injury or danger to public health or safety, nor shall any person leave offensive matter in any vessel in the Marina.

12. Sharing of Mooring

No person shall tie or raft a vessel to any other vessel moored in the Marina except in such area or areas of the Marina set aside by the Marina Manager specifically for that purpose.



marina rules (con't)

13. Notice of Defects

Persons shall promptly notify the Marina Manager on becoming aware of any defect or damage to the Marina.

14. Alcohol

No person shall consume alcohol within the Marina except on private vessels or on licensed premises or other premises where consumption of alcohol is not prohibited by law.

15. Storage

No person shall store any property, gear or equipment under their control or direction at the Marina, without the prior written consent of the Marina Manager.

16. Fishing

Fishing is not permitted in any part of the Marina unless direction is given by the Marina Manager.

17. No Swimming

Except where necessary for the inspection of the Berth-holders vessel, no person shall swim or dive within the Marina without prior approval in writing from the Harbourmaster and Marina Manager

18. No Cycling

No person will cycle or permit its guests, visitors, agents to cycle on pontoons at any time.

19. Living on Board

Where Living–Aboard is permitted by the Marina Manager.

<http://nelson.govt.nz/assets/Services/Downloads/liveboard-application.pdf>

20. Animals

- i) No person shall permit any animal under their control to enter or remain in the Marina unless properly controlled and provided it does not disturb other persons.
- ii) Persons shall be responsible for promptly cleaning up and disposing of any droppings of any pets brought to the Marina by themselves, or their invitees, in a proper manner.

21. Use of Landing Stages

- i) No person shall use the Marina landing stages for any purpose other than for embarking or disembarking passengers or stores except with the prior approval of the Marina Supervisor and then on such conditions as the Marina Supervisor may impose.
- ii) No person shall use any water supply in or around the Marina landing stages other than for washing down vessels, domestic or culinary purposes.

22. Alteration of Mooring

- i) No person shall alter or modify any structure or thing associated with or forming part of a mooring without the permission of the Marina Manager.
- ii) Only fenders approved by the Marina Manager may be used within the Marina.



marina rules (con't)

23. Parking of Vehicles with Trailers at the Boat Ramp

- i) No person shall park any vehicle or boat trailer in the Marina Parking Area without having first paid the charges for so doing as fixed by the Marina Manager from time to time.
- ii) No person shall park any vehicle or boat trailer in the Marina Parking Area for a period in excess of 72 hours without the permission and without having first paid the charges for so doing as fixed by the Marina Manager from time to time.
- iii) Where a vehicle or vessel including trailers whether empty or full has been parked in excess of 72 hours without authorisation from the Marina Manager such vehicle or vessel will be deemed to have been abandoned and the owner covenants that the Marina Manager may dispose of said vehicle or vessel as it sees fit. In such circumstances the owner of the vehicle/vessel agrees no liability for removal and disposal attaches to the Marina Manger. All such liability is therefore expressly denied.
- iv) Any vehicle and/or boat trailer which is parked in any Marina parking area in a manner not in conformity with this bylaw, may be removed by or at the request of any officer duly authorised by the Council to any nearby lawful place for vehicle parking or to any Council vehicle park or to any yard in the city occupied by a company engaged to remove such vehicle, as the said officer shall think fit.
- v) Such vehicle and/or trailer may be detained in such place until the reasonable costs of the removal and of any subsequent daily storage are paid.

24. Careening Grid

No person shall use or occupy or moor to, tie to or place a vessel on the Careening Grid without first obtaining the permission of the Marina Manager so to do and then on such terms and conditions as the Marina Manager may impose.

25. Shower Facilities

No person shall use the shower facilities in the Marina Amenities Building without first having obtained a key to those facilities from the Marina Manager and paying to the Marina Manager such deposit and other charges for such use as fixed by the Council from time to time.

26. Visiting Vessels

No person shall use or occupy a mooring in the Marina which has been set aside by the Council for visiting vessels except with the consent of the Marina Manager and then only on such terms and conditions and for such duration as specified by the Marina Manager (See also "living on board").

27. Boat Storage Park

No person shall use the Boat Storage Park without first paying the charges for such use as fixed by the Council from time to time.

28. Use of Boat Ramps

- i) No person shall use any boat ramp within the Marina Area otherwise than in accordance with any rules which the Council may from time to time, by resolution, establish.
- ii) No person shall use any boat ramp for the launching of any trailer boat without having first paid any fees or charges which may be fixed by the Council from time to time in respect of such use, and displaying the appropriate ticket, label, sticker or other proof of such payment in a prominent and easily seen position on the trailer, or in or on the towing vehicle.



marina rules (con't)

29. Safety

- i) Any person mooring or tying up a vessel in the Marina shall ensure that:
 - (a) the vessel is properly and safely secured to whatever it is moored or tied to;
 - (b) all access ways and waterways are kept clear;
 - (c) the vessel is in a good and safe state of repair;
 - (d) in the event of any accidental spillage into the Marina immediate steps are taken to notify the Marina Supervisor where the spillage poses a threat to any other vessel, property or thing, and with advice remedy any damage caused;
 - (e) the name of the vessel is clearly displayed on the vessel;
 - (f) there is on the vessel an adequate fire extinguisher or fire fighting appliance.
- ii) No person shall commence or carry out any repairs, alterations or work on any vessel in the Marina involving welding; flame cutting; or grinding without complying with the provisions of the General Harbour (Ship, Cargo and Dock Safety) Regulations 1968 or any amendment thereto or any regulation made in substitution thereof.
- iii) Any repairs, alterations or works on or to any vessel in the Marina must not be undertaken without the prior approval of the Marina Manager in writing, and any conditions imposed by the Marina Manager must be strictly observed. All work must be carried out in a safe and proper manner by Contractors approved by the Marina Manager. Minor work may be undertaken on private vessels by owner.
- iv) If the Marina Manager is of the opinion that any repairs, alterations or works are not being carried out in a safe and proper manner he may order that all work cease and every person carrying out such work cease until the Marina Manager is satisfied the work does not pose a risk to vessels, users, visitors, customers or the general public.
- v) No person shall bring into or keep in the Marina any motor spirit, petroleum products, fuel oil, liquified petroleum, gas, compressed natural gas, kerosene or goods without the permission of the Marina Manager provided that a vessel may store small quantities of fuel in safe containers in quantities reasonably required for the vessel's engines or stoves.

30. Operation of Vessels in the Marina

- i) No person shall operate in the Marina a vessel the engine of which causes excessive noise.
- ii) No person shall cause excessive noise by accelerating or racing the engine of a vessel while the same is stationary.
- iii) No person who is under the age of 15 years shall operate or navigate a vessel within the Marina.
- iv) No person shall operate or navigate a vessel within the Marina at a speed exceeding 5 knots in the main channel or 3 knots elsewhere.
- v) Every person who operates or navigates a vessel within the Marina shall as far as is practicable do so at such a speed that waves caused by the movement of the vessel through the water do not break against the shore or against any structure within the Marina.

31. Emergency Contact

- i) Every person shall advise the Marina Manager of the name and telephone number of a person other than the Berth-holder who can be contacted by the Marina Manager in the event of an emergency.

32. Visitors to the Marina

- i) Every person shall ensure that:
 - (a) All of its invitees comply with the terms of this licence; and
 - (b) Any children under the age of 13 and for whom the person or its visitors are responsible, are accompanied by an adult.