

2019 2020



 Nelson City Council
te kaunihera o whakatū

 tasman
district council | te Kaunihera o
te tai o Aorere



WELCOME TO SUMMER



Nau mai haere mai, welcome.

Summer is a special time of year in the Nelson Tasman region. We can look forward to enjoying sunny days with our stunning natural landscape providing the perfect backdrop for the summertime entertainment and activities we've got lined up for this year's Summer Events programme.

The programme is action-packed with great reasons to be in the top of the south over the holiday season for locals and visitors alike. Many of our favourite events from previous years are back – who doesn't love taking the little ones to the Teddy Bears' Picnic or packing a hamper of goodies for an evening under

the stars at Summer Movies Al Fresco or Opera in the Park. And then there's the Nelson Buskers Festival – live street performance at its best – and much, much more.

Every summer, Nelson City Council and Tasman District Council produce this guide with the generous support of our sponsors, to promote the fun (and usually free) events and attractions to entertain you and your family. Keep it, use it and enjoy!

Tasman Mayor Tim King
Nelson Mayor Rachel Reese



BROUGHT TO YOU BY



SUPPORTED BY



IMPORTANT NOTICE: In order to manage risks and ensure compliance with health and safety requirements for upcoming summer events, the Councils require all people attending to follow all instructions and rules (including signage) given to them for the particular event. In addition, you must at all times take all reasonably practicable steps to ensure both your own and your family's health and safety and that you do not do anything to adversely affect the health and safety of others. People under the age of 13 must have parental supervision. At the time of printing, every effort has been made to ensure that the details in this Summer Events Guide are correct. For up-to-date event information, go to itson.co.nz.

MAP

 = Locations of summer events in our region

Using this guide

This guide has two listing sections. Events listed in the front half are supported (usually financially) by the local Councils. A more comprehensive list of events in the region is at the back. We aim to include as many events as possible from the It's On website, however space limitations mean we unfortunately cannot include every event.



Driving times

Nelson to Takaka
104km, 1 hour 46 minutes

Nelson to Murchison
124km, 1 hour 39 minutes



CHRISTMAS EVENTS



CAROLS

Carols in the Park

Fri 6 Dec, 5–8pm // Brightwater Domain // **FREE**

Jingle Bells at Greenmeadows

Sun 8 Dec, 4–8pm // Greenmeadows Sports Field, Stoke // **FREE**

Carols by Candlelight

Sun 22 Dec // Entertainment from 6.30pm, carols 8pm // Washbourn Gardens, Richmond // **FREE**

Carols on the Green

Tue 24 Dec, 7pm // Village Green, Commercial Street, Takaka // **FREE**

Carols on the Church Steps

Tue 24 Dec, 8.45pm // Church Steps, top of Trafalgar Street, Nelson // **FREE**

PARADES

PAK'nSAVE Richmond Santa Parade

Sun 24 Nov, 12–2pm // Queen Street, Richmond // **FREE**

Nelson Santa Parade

Sun 1 Dec, 3–6pm // Bottom of Trafalgar Street, Nelson // **FREE**

If wet, the event will be rescheduled to Sun 8 Dec.

NBS Starlight Christmas Parade

Fri 6 Dec // Entertainment from 5pm, parade 7pm // High Street, Motueka // **FREE**

Golden Bay Santa Parade

Sat 14 Dec, 10am // Commercial Street, Takaka // **FREE**

OTHER

Cathedral Festival of Christmas Trees

Tue 26 Nov–Thu 23 Jan, 8.30am–5pm // The wondrous 'Switch On' is Tue 26 Nov at 6pm // Christ Church Cathedral, Nelson // **FREE**

Country Christmas Market

Sat 7 Dec, 10.30am–3pm // Moutere Hills Community Centre, Upper Moutere // **FREE**

LANTERN CELEBRATION

The Lantern Celebration

Theme: The Enchanted Forest

Sat 14 Dec, 7–10pm // Centre of New Zealand (Botanical Reserve), Nelson // FREE

The Enchanted Forest is brimming with fairytale characters and wild imaginings. Take a delightful trip along the walking track towards the Centre of New Zealand where entertainers and installations await. At the top, enjoy music, face painting and more, as we watch the sunset. Bring a picnic and warm clothing. Remember your battery-powered lantern, to light your way down after dark. You may even like to stay for the outdoor movie! Come and experience this unique and whimsical, family-friendly adventure in nature. Children under 13 must be supervised by an adult. **Entertainment on the 'up' track ends at 9pm.**

If wet, the event will be rescheduled to Sun 15 Dec.

This is a zero waste event.

Stay for the movie!

Join us at the Botanical Reserve after the Lantern Celebration for the wonderful family Christmas movie, *A Christmas Carol* (1951, 86 mins). **See page 9.**

Lantern Making Workshop

Sun 8 Dec, 11am–1.30pm // Isel Park, Stoke // \$2 per person

Come along to the Teddy Bears' Picnic and make your own enchanted lantern.



Photos © Tim Cuff



CHILDREN'S EVENTS



Teddy Bears' Picnic

Sun 8 Dec, 11am–1.30pm // Isel Park, Stoke // **Most activities are FREE**

The big day out for the teddy bears is here! Funny games, entertainment, music, dancing and other amusements on offer for young and old teddies (and their humans) to enjoy. Plus the opportunity to make a lantern for the Lantern Celebration on Saturday 14 December. **Remember to bring your own refreshments.**

"Teddy bears don't need hearts, they're already stuffed with love." *Unknown*

Cancelled if wet. Check the 'Nelson City Presents' Facebook page for updates.

**Please pack it in, pack it out
and keep our parks beautiful!**



New World Teddy Bears' Picnic

Sun 26 Jan, 10am–1pm // Thorp Bush, Motueka // **FREE**

Bring your teddy and a picnic lunch along to Thorp Bush for face painting, bouncy castle, train rides, sports equipment and free giveaways.

Children's Day

Sun 1 Mar, 10am–2pm // Richmond Aquatic Centre // **Gold coin entry into the pools, other activities FREE**

Enjoy the fun-filled pools for a gold coin or the outdoor activities including bouncy castles, balloon twisting, live music, obstacle courses and more. Bring your bike for the biking challenges, a picnic, water bottle and sun protection.



NEW YEAR'S EVE COUNTDOWN



**Mon 31 Dec, 8pm – 12.30am //
Upper Trafalgar Street, Nelson // FREE**

Nelson's central city New Year's Eve Countdown is a great place to celebrate your way into another decade – 2020!

This popular Nelson family-friendly event is ever-evolving: this year we've introduced a session especially for the kids.

Go to itson.co.nz or 'Nelson City Presents' on Facebook for more details.

PLEASE NOTE: Public streets are alcohol free. There will be zero tolerance for alcohol and underage drinking.

8pm – 10pm

A family-friendly programme full of entertainment and performances, culminating with a **kids' countdown** and fireworks.

10pm – 12.30am

Local rising star band Rabbit Hölle kicks off the live countdown concert followed by none other than Jordan Luck and his band, moving everyone along with Dance Exponents hits and more... right up to the New Year's countdown and fireworks at midnight!

TAHUNA SUMMER SOUNDS



**Fri 10 & Fri 17 Jan, 6–9pm //
Tahunanui Reserve,
Tahunanui Beach // FREE**

Live music returns to Tahunanui Beach with local musicians performing across two different stages. Interactive beach-themed games and competitions complement the live music, with prizes up for grabs. Kick back, relax and enjoy the sounds of summer by the beach at this family-friendly festival.

*If wet, the events
will be rescheduled
to the next day
(Sat 11 & Sat 18 Jan).*



SUMMER MOVIES AL FRESCO



Fri 13 Dec–Sat 25 Jan, 9–11pm (movie starts at dusk) // \$2 adult, \$1 child

This summer we bring some relatively unknown jewels to the parks, including a salute to the 50th anniversary of the Apollo 11 flight. Coinciding with the Nelson Provincial Museum's *Our Moon* exhibition, we will set up in Trafalgar Street for a space-themed screening. The 1902 16-minute *Trip to the Moon* and the 1964 *First Men in the Moon* are both acknowledged for the groundbreaking special effects of their time.

Some screenings will be shown with English subtitles for the deaf, hard of hearing, or English as a second language viewers (marked **S** on schedule). Most parks are flat, grassy surfaces and have accessible toilets, except Fairfield Park.

Gather a group, a picnic, perhaps a blow-up couch and join us from 7.30pm to play giant board games, enjoy the park and watch the region's glorious summer sunsets. Wrap up warm and please pocket a torch to light your way home.

Movies will not screen if it is raining. If the weather is marginal on the night, please text 'Is it on?' to 021 776 623 after 7.30pm.

**Please pack it in, pack it out
and keep our parks beautiful!**

MOVIES



Anne of the Indies

1951 // 81 mins // PG

A swashbuckling movie of floggings, peg legs, and eye patches galore. When French naval officer Pierre LaRochelle (Louis Jourdan), decides to bring (beautiful) pirate Captain Anne Providence (Jean Peters) to justice, he finds he has bitten off more than he can chew.

A Christmas Carol

1951 // 86 mins // G

Based on the classic novel by Charles Dickens, we follow the miserly Ebenezer Scrooge (Alastair Sim) as he is visited by the ghosts of Christmases past, present and future. Can Scrooge see the error of his ways and become less of a humbug?

Pollyanna

1960 // 134 mins // G

Orphaned Pollyanna (Hayley Mills) is sent to live with her disagreeable Aunt Polly (Jane Wyman). When her perennially positive nature is challenged following an accident, some of the more bitter townfolk step up and demonstrate just how much Pollyanna and her 'glad game' have changed their lives.



The Pink Panther

1963 // 115 mins // PG

Slapstick, car chases, plots, affairs, a jewel heist and an enduring theme song – this film has it all! Peter Sellers plays the bumbling Inspector Jacques Clouseau chasing the phantom jewel thief who is after a priceless diamond necklace: The Pink Panther.

Funny Girl

1968 // 151 mins // G

Funny Girl follows the life and career of early 1900s comedienne Fanny Brice (Barbara Streisand) as she makes her break into show business, entertains the masses and becomes the greatest star who won't let anyone rain on her parade.

Trip to the Moon

1906 // 16 mins

One of the few surviving films by Georges Méliès. We follow an association of astronomers who have convened to listen to the plan of Professor Barbenfouillis to fly to the moon. With the one dissenting voice quashed by Barbenfouillis and the other members, the plan is approved!

First Men in the Moon

1964 // 103 mins

Based on HG Wells' novel, it's 1964 and scientists are confused by evidence on the moon of a Victorian era space flight until a nonagenarian (Edward Judd) explains... Back in 1899, Bedford, an eccentric scientist (Lionel Jeffries) and a heroine (Martha Hyer) took a trip to the moon in a home-made space vehicle. This is their story.

SCHEDULE

Fri 13 Dec // Pollyanna
Isel Park, Stoke

**Sat 14 Dec // Trip to the Moon 9pm,
then A Christmas Carol 9.30pm S**
Botanical Reserve, Nelson

**Thu 19 Dec // Trip to the Moon 9pm,
then First Men in the Moon 9.20pm**
Outside Nelson Provincial Museum,
Trafalgar Street, Nelson

Fri 20 Dec // A Christmas Carol
Washbourn Gardens, Richmond

Sat 21 Dec // The Pink Panther
Fairfield Park, Nelson

Wed 8 Jan // Anne of the Indies
Tahunanui Beach Holiday Park

Thu 9 Jan // The Pink Panther S
Isel Park, Stoke

Fri 10 Jan // A Christmas Carol
Founders Heritage Park, Nelson

Sat 11 Jan // Funny Girl
Fairfield Park, Nelson

Sun 12 Jan // Pollyanna
Washbourn Gardens, Richmond

Wed 15 Jan // Anne of the Indies
Village Green, Takaka

Thu 16 Jan // The Pink Panther
Faulkners Bush, Wakefield

Fri 17 Jan // First Men in the Moon S
Founders Heritage Park, Nelson

Sat 18 Jan // Anne of the Indies
Fairfield Park, Nelson

Sun 19 Jan // Funny Girl S
Isel Park, Stoke

Thu 23 Jan // The Pink Panther
Jester House, Tasman

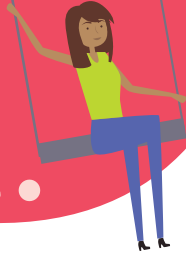
Fri 24 Jan // Pollyanna
Fairfield Park, Nelson

Sat 25 Jan // Anne of the Indies S
Washbourn Gardens, Richmond



NELSON BUSKERS FESTIVAL

THU 30 JAN – SUN 2 FEB



The Nelson Buskers Festival brings street performers to our vibrant region for four days of extraordinary shows. This year buskers from Mexico, USA, Hungary, Hawai'i and Canada come to amaze and enthrall with acrobatics, contortion, clowning and, of course, juggling.

Four different locations! Trafalgar Street, Church Steps and Mapua Wharf events are family-friendly and free to attend – though bring some cash to show your appreciation for the amazing skills of these talented and hard-working performers. The shows at the fourth location, The Boathouse, are ticketed and a little less predictable in content so are rated R16.



Buskers on Trafalgar

Thu 30 & Fri 31 Jan, 11am–2.30pm //
Sat 1 Feb, 10.30am–2pm // Upper
Trafalgar Street, Nelson // Koha

The top of Trafalgar Street comes alive with buskers from all over the world. Join us for some hilarious, weird, eye-opening, gravity-defying acts in the heart of the city. An irresistible summer-fun combination of extraordinary and family-friendly street performances, lots of refreshment options from the local cafés and our beautiful central city. Bring a sun hat and a water bottle!

Buskers at the Boathouse

R16 (content can be unpredictable)

Thu 30 Jan, 8pm & Fri 31 Jan,
8.30pm // The Boathouse, Nelson //
Pre-sales \$30, door sales \$37.50
(plus TicketDirect service fee)

Join us for a cabaret night when the buskers let down their hair for some serious hilarity. We dare you to sit at the front – who knows what might happen! Restricted to adults (R16), some content might offend. Tickets available through Theatre Royal Nelson, Nelson Centre of Musical Arts, Richmond Mall, Nelson, Motueka and Blenheim i-SITE, online at ticketdirect.co.nz or phone 0800 224 224.



Buskers on the Church Steps

Sat 1 & Sun 2 Feb, 6pm // Church Steps,
top of Trafalgar Street, Nelson // Koha

Two stunning evening variety shows for the whole family. Bring sun hats, blankets and cushions and enjoy a night of crazy and delightful entertainment. Delicious food available from onsite stalls, and remember to save some cash for the talented performers!

Buskers at Mapua Wharf

Back by popular demand!

Sun 2 Feb, 11am–2.30pm //
Mapua Wharf // Koha

Join us at the beautiful Mapua Wharf to see the buskers perform their individual shows.

Follow and like the 'Nelson Buskers Festival' Facebook page for the latest updates on acts, alternative wet weather venues, etc.



LOCAL MARKETS

Nelson Market

Saturdays, 8am–1pm //
Montgomery Square, Nelson

Monty's Market

Sundays, 8am–1pm //
Montgomery Square, Nelson

Mercado Latino (Latin Market)

First Friday of every month until April,
4–9pm // Kirby Lane, Nelson

Motueka Sunday Market

Sundays, 8am–1pm //
Decks Reserve Carpark, Motueka

Nelson Farmers Market

Wednesdays, 8.30am–1.30pm //
Kirby Lane, Nelson

Isel Twilight Market

Thursdays, 4.30pm–dark //
Isel Park, Stoke

Village Market Takaka

Saturdays, 9am–1.30pm //
Takaka Library Carpark



COMMUNITY & CULTURE



Nelson City Libraries

Visit nelsonpubliclibraries.govt.nz/events-calendar

Many engaging summer activities planned for various ages and interests at libraries in Nelson, Tahunanui and Stoke.

Tasman District Libraries

Visit tasmanlibraries.govt.nz/events

Lots of fun summer activities planned for various ages and interests at the Richmond, Motueka, Takaka and Murchison libraries.

Summer Reads Book Fair

Sat 7 Dec–Sun 12 Jan // Founders Heritage Park, Nelson // **FREE**

A mini book fair in the windmill. Find a tale to relax with over the festive season.

Richmond Market Day

Mon 30 Dec, 9am–3pm // Queen Street, Richmond // **FREE**

Shopping, fun and entertainment for all the family at the biggest market in the top of the south! Market stalls line Queen Street along with fun entertainment like face painting, buskers, bouncy castle, stilt walkers, magicians and more.

Wakefield Country Fête

Thu 2 Jan, 9am–2.30pm // Wakefield Village Hall & Green // **FREE**

The oldest annual craft and food market in the region, celebrating 40 years this year!

Higgins Heritage Park Steam Museum & Craft Fair

Thu 2 Jan, 9am–3pm // Higgins Heritage Park, Wakefield // **Koha**

Enjoy this 'family' of museums packed into one location with a large variety of exhibits. The event will include local entertainers, scrumptious food and a fantastic array of local and regional craft stalls.

Nelson Jazz Festival

Thu 2–Sun 5 Jan // Various locations // **Ticketed and FREE**

Four days of outstanding jazz and blues concerts around Nelson and Tasman. A mix of ticketed and free lunchtime and evening gigs with local and out-of-town bands providing hours of smooth summer sounds! Check the 'Nelson Jazz' Facebook page for programme details.





Treasure Hunt

Fri 10 Jan, 1–2pm // Washbourn Gardens, Richmond // FREE

Get the family together for a fun, active afternoon treasure hunting and exploring the beautiful Washbourn Gardens. This event can be done as an individual or in a group.

If wet, the event will be rescheduled to Fri 17 Jan.

Romeo and Juliet – Nelson Summer Shakespeare

Thu 16–Fri 24 Jan (excl Mon 20 Jan),

Fairfield House Meadow, Nelson //

Sat 25 & Sun 26 Jan, Riverside

Community Oval, Lower Moutere //

Wed 29 & Thu 30 Jan, Washbourn

Gardens, Richmond // **Fri 31 Jan &**

Sat 1 Feb, Isel Park, Stoke // **All shows**

start at 6pm // Pay What You Decide

Sun 2 Feb, 2pm, Theatre Royal Nelson //

\$25 from Theatre Royal or TicketDirect

Nelson Summer Shakespeare returns with the greatest love story. Professional performances at various venues across Nelson and Tasman.

Cancelled if wet. Check the 'Nelson Summer Shakespeare' Facebook page for updates.

Golden Bay A & P Show

Sat 18 Jan, 8am–5pm // Golden Bay Recreation Park, Takaka // Pre-show tickets from NBS Takaka \$10, gate sales \$15, under 15 FREE

A true country, family-friendly show! Get up close with the animals and cheer on horse riders, wood choppers and shearers. Stunning displays of baking, flowers, handcrafts and photography, along with many trade stands plus amusement rides, an entertainment hub and children's play area. And don't forget the grand parade early afternoon.

Amazing Race – Rabbit Island

Sat 18 Jan, 10–11.30am // Harakeke Picnic Area, Moturoa/Rabbit Island // FREE

Challenge the whole family! Racing in teams or as individuals, start with a clue, find the next location and clue to carry on your journey and complete the amazing race.

If wet, the event will be rescheduled to Sat 1 Feb.

Nelson Summer Kite Festival

Sat 18 & Sun 19 Jan, 12–5pm // Neale Park, Nelson // Koha

Now in its 30th year, this delightful air-borne festival marks the start of the New Zealand Kite Tour 2020 (then moving to Christchurch, Ashburton and Otaki). Kite-fliers from all over New Zealand and the world will fly their kite creations over Neale Park.

Jazz on the Village Green

Most Sundays from 19 Jan–12 Apr, 1.30–4pm // Founders Heritage Park, Nelson // \$2 per person

Relax on the Village Green with live jazz. Bring a picnic and enjoy the summer sounds.



Amazing Race – Richmond

Tue 21 Jan, 11am – 12.30pm //
Easby Park, Richmond // FREE

Challenge the whole family! Racing in teams or as individuals, start with a clue, find the next location and clue to carry on your journey and complete the amazing race.

If wet, the event will be rescheduled to Fri 24 Jan.

Trafalgar Street Market Day

Sat 1 Feb, 9am – 4pm //
Trafalgar Street, Nelson // FREE

A huge day of shopping bargains, entertainment and fun for the whole family. Some 85 stalls with everything from clothes and food to arts and craft, plus roving musicians and street performances.

Sarau Festival

Sun 2 Feb, 3 – 9pm // Moutere Hills Community Centre, Upper Moutere //
\$6 per person, children FREE

Celebrate the fabulous Moutere Valley formerly known as Sarau, its people, crafts and crops, such as blackcurrants, grapes and hops. Browse the stalls, enjoy fantastic local musicians and sample a plate or glass of something exceptional as the sun goes down over the Mount Arthur range. Excellent kids' zone. Bring the family, sun hats and a blanket, but please leave the dog at home.

International Kai Festival

Thu 6 Feb, 10.30am – 3.30pm, pōwhiri at 11am // Founders Heritage Park and Whakatū Marae, Nelson // Koha

Share food and celebrate our Nelson communities at the annual International Kai Festival. Small portions of food are priced at \$5 or \$10 to encourage visitors to try a wide variety.



Tasman Asian Night Food Fair

Sat 8 Feb, 4 – 9pm //
Washbourn Gardens, Richmond // FREE

Celebrating cultural diversity with Asian food and entertainment – a wonderful opportunity to learn about other cultures. Unity in diversity!

If wet, the event will be rescheduled to Sat 15 Feb.

Family Picnic

Sun 9 Feb, 11am – 12pm // Washbourn Gardens, Richmond // FREE

Come along for some family fun in stunning garden surrounds. Bouncy castles, games, music and sports equipment.

If wet, the event will be rescheduled to Sun 16 Feb.

Murchison A & P Show

Sat 15 Feb, 8.30am – 6pm // Murchison Sport, Recreation and Cultural Centre and Domain // Adult \$10, family \$20, under 5 FREE

Come and celebrate the 100th year! Lots of fun at the show – trade, horses, flower show, baking competition plus other entertainment.

Makete Pō – Nelson

Fri 13 Dec, 4 – 9pm // Maitai Promenade, Trafalgar Centre, Nelson // FREE

Celebrate Te Ao Māori, enjoy Māori arts and crafts, experience the friendly whānau atmosphere, eat some kai, enjoy the live entertainment, and see waka ama in action on the Maitai River. Nau mai, haere mai!

Nelson Wine & Food Festival

Sun 16 Feb, 11am–5pm // Richmond A & P Showgrounds // Tickets \$20, under 12 FREE

Celebrate sensational sounds, wine, food and summer. Hold onto your holiday groove, grab a friend and head to the festival for all day entertainment, fantastic food and award-winning wine and beer. Fun for all ages.

Sprig & Fern Trolley Derby

Sat 22 Feb, 10am–4pm // Queen Street, Richmond // FREE

The Trolley Derby is one of Nelson Tasman's iconic events celebrating carting and racing trolleys for many years. Formerly held in the centre of Nelson city, the event now has a new location, on the majestic Queen Street in Richmond!

Makete Pō – Richmond

Fri 28 Feb, 4–9pm // Washbourn Gardens, Richmond // FREE

Celebrate Te Ao Māori, enjoy Māori arts and crafts, experience the friendly whānau atmosphere, eat come kai and enjoy live entertainment. Nau mai, haere mai!

Marchfest

Sat 14 Mar, 12–9.30pm // Founders Heritage Park, Nelson // Tickets on sale from Sun 1 Dec at The Free House, Nelson i-SITE or online at marchfest.com

Unlike most beer festivals, all the beers available at Marchfest have been specially commissioned for the event and have never previously been tasted by the public. Great live music as well as local wines, ciders and juices, regional cuisine and a kids' zone.



Race Unity Day

Sun 22 Mar, 11am–4pm // Victory Square, Nelson // FREE

Did you know that Nelson has the third largest ethnically diverse population per capita in New Zealand? Be inspired by the kaleidoscope of delicious food and brilliant entertainment from our richly multicultural community. Minimise waste with BYO plates, cups and utensils – or you can hire them on the day.

Nelson Heritage Festival

Wed 1–Thu 30 Apr // Various locations around Nelson and Tasman // Ticketed and FREE

Celebrating Nelson's unique stories, people and places, the Festival offers an insightful and engaging programme of more than 40 events.

Positive Ageing Expo

Fri 3 Apr, 10am–3pm // Headingly Centre, Richmond // FREE

An expo to provide information and advice for those who are heading towards retirement. 80+ stallholders along with seminars, demonstrations and a chance to have a go at a range of activities, as well as getting quick health checks.

Wakefield Apple Fair

Sun 5 Apr, 10.30am–3.30pm // Willow Bank Heritage Village, Wakefield // FREE

Fun, family-friendly celebration of the apple harvest with freshly pressed apple juice, food and beverage stalls, games and entertainers.



SPORT AND RECREATION



Sport Tasman's Backyard Games

Sun 15 Dec, 10am–1pm //
Decks Reserve, Motueka // FREE

Join in the family fun with giant games, sports equipment and more!

Skatepark Tour

Sun 5 Jan, 3–5pm, Takaka //
Mon 6 Jan, 5–7pm, Mapua //
Wed 8 Jan, 5–7pm, Tapawera //
Sat 11 Jan, 3–5pm, Motueka //
Sun 12 Jan, 3–5pm, Richmond //
Wed 15 Jan, 5–7pm, Brightwater //
Sat 18 Jan, 3–6pm, Nelson // All FREE

The Skatepark Tour returns to the region this summer, showcasing the best talent on skateboards, BMX and scooters. Helmets are compulsory for all competitors.

Golf Croquet World Team Championship

Mon 6–Sun 12 Jan, 9am–5pm or later each day // Nelson Hinemoa Croquet Club, Nelson // FREE

Tier 1 of the World Team Championship sees the world's top eight teams competing for the title. Spectators are very welcome to view croquet played at the very highest level.

Summer Slam Beach Volleyball

Fri 10–Sun 12 Jan, 8am–6pm //
Tahunanui Beach // FREE to watch

Dynamic and spectacular athleticism and world class action guaranteed from the national and international (US and Europe) Elite competition, alongside Amateur and Junior competitions over three intense days.

Tata Titanic Cardboard Boat Race

Sat 25 Jan, 9am // Tata Beach, Golden Bay // \$10 per boat, spectators FREE

This annual event is a must! Get your creative building skills on and create a winning cardboard boat. Your boat needs to be seaworthy... or just seaworthy enough. Lots of fun and laughter for participants and spectators. Prizes for Best Boat, Spectacular Sinking, Costumes and more.

If wet, the event will be rescheduled to Sun 26 Jan.



Photo © Julie Maree Photography

Go By Bike Day

Wed 12 Feb, 7.30–9am // Motueka Museum // The Junction Green, Takaka // Sundial Square, Richmond // 1903 Square, Nelson // FREE

Ditch those cars and buses as thousands of New Zealanders get on their bikes and cycle to work or school! Anyone out and about on their bike in the morning can stop by for a breakfast snack and spot prizes.

Family Bike Fun

Sat 15 Feb, 10am, Golden Bay Recreation Park, Takaka // Sun 16 Feb, 10am, Saltwater Baths, Motueka // FREE

Celebrating cycling and open to all! Test your skills on the bike ramps and other activities including a slow bike race and orienteering course. There will also be bike mechanics to give your bike a quick check.

Flash Electrical Beach Fun Day

Wed 26 Feb, 5.30pm // Kaiteriteri Beach // FREE

A fun day out at the beach with paddleboards, kayaks, big dig, sand sculptures and a free BBQ sausage. Held in conjunction with Kaiteri Kayaks and Abel Tasman Sea Shuttle.

ITM Colour Run

Sat 22 Feb // Registrations from 9am, event starts 10am // Golden Bay Recreation Park, Takaka // \$5 per person, children under 5 FREE

A wonderfully colourful 3km walk or run along a course filled with fun activities and colour! A great day out with family and friends celebrating health, happiness and fun.



Buller Festival

Sat 29 Feb & Sun 1 Mar // Murchison // Cost to participate, FREE to watch

New Zealand's premier white-water sports event, held in and around beautiful Murchison. A weekend of fun and action, encouraging participation from all ability levels.

Lake Rotoiti Power Boat Regatta

Sat 29 Feb & Sun 1 Mar, racing starts 11am // Kerr Bay, St Arnaud // Adults \$10, children under 12 FREE

Join in the fun and watch some of New Zealand's fastest boats, reaching speeds of over 250km/hr. Please no drones or dogs in the Nelson Lakes National Park.

Interislander The Big Tahuna

Sat 7 Mar, 7am–1pm // Tahunanui Beach // From \$19.50, enter at oceanswim.co.nz

This annual ocean swim event offers a terrific range of swim experiences for all ages and abilities, including three lengths close to shore for Banana Boat OceanKids on their first ocean swim. Plus – introducing *The Sprint*, a 200m out and back 'splash for cash' event!



Opera

IN THE PARK

SAT 15 FEB, 7.30–10PM // TRAFALGAR PARK, NELSON // GATES OPEN AT 5.30PM

PRICES: Early bird adult \$15 (until Tue 31 Dec), full price adult \$25, child aged 5–15 years \$5, child under 5 FREE (prices exclude TicketDirect service fee)

Nelson Opera in the Park returns to the city, with top New Zealand opera and contemporary singers alongside our national orchestra, the New Zealand Symphony Orchestra.

Soak up the atmosphere for this wonderful night of music in the open air. With affordable ticket prices, this is a world-class event that everyone can enjoy. Bring warm clothing, a torch and rug if in the picnic area. Those with chairs please sit in the designated areas. Bring a picnic or buy from delicious food stalls on site.

Tickets available through Theatre Royal Nelson, Nelson Centre of Musical Arts, Richmond Mall, Nelson, Motueka and Blenheim i-SITE, online at ticketdirect.co.nz or phone 0800 224 224.

For further information go to itson.co.nz or the 'Nelson City Presents' Facebook page.

Our thanks to Combat Pyrotechnics for the fabulous fireworks display.

We are working towards zero waste. Please leave nothing but footprints.

Performers

Pre-show: Nelson City Brass

Our very own Nelson City Brass joins us to add some extra sparkle to the entertainment. Under the baton of Musical Director Nigel Weeks, New Zealand's newest A grade brass band continues to present a much loved and appreciated range of concerts and attendances at civic functions around Nelson after 162 years.

Jason Kerrison

An award winning singer/songwriter, Jason is the front-man for New Zealand icon band Opshop, whose 2007 album *Second Hand Planet* yielded the singles 'Maybe' and the inescapable 'One Day' and made them the first local band ever to reach number one on iTunes New Zealand.

He is one of few artists nominated twice for the prestigious APRA Silver Scroll Song Writing Award, winning in 2008, and, in 2011, was made a Member of the New Zealand Order of Merit in the Queen's Birthday Honours, for services to music.

Tami Neilson

We are thrilled to feature Tami Neilson alongside the NZSO at this summer's concert. Coming off extensive national and international tours, Tami brings her powerhouse voice to Nelson this summer.

"There are singers and then there is Tami Neilson, for whom the word 'singer' just isn't big enough."

No one forgets the first time they saw Tami Neilson. She can hush a room with an original song that channels the hurting spirit of Patsy Cline or the sensuality of Peggy Lee, or bring the audience to its feet on a rockabilly raver.

New Zealand Symphony Orchestra

We are honoured to welcome the New Zealand Symphony Orchestra back to Nelson Opera in the Park. One of the world's oldest national symphony orchestras, the NZSO has charmed audiences with memorable concerts and recordings since 1947.

The NZSO is recognised as an outstanding orchestra of international stature and its reputation for artistic excellence attracts many of the world's leading conductors and soloists each year. In 2016, the NZSO was nominated for Best Orchestral Performance at the prestigious Grammy Awards.

Each year the NZSO performs multiple concerts around New Zealand to audiences in excess of 100,000 people. Many more enjoy the Orchestra's performances through RNZ Concert broadcasts, film soundtracks and CD recordings. On 15 Feb 2020, it will be the turn of the Opera in the Park audience to relish the NZSO.

Joel Amosa and Eliza Boom

Joel Amosa (Baritone), and Eliza Boom (Soprano) are the winner and runner-up respectively of the 2018 Lexus Song Quest.

Joel completed his music degree and postgraduate diploma under the tutelage of Isabel Cunningham and Frances Wilson at the University of Otago. He has recently been named as the 2019 Dame Malvina Major Young Artist with New Zealand Opera.

Eliza Boom is currently training at the National Opera Studio, supported by the Kiri Te Kanawa Foundation and the Drake Calleja Trust. Prior to this she studied with Mary Plazas at the Royal Northern College of Music on their International Artist Diploma and Master of Music programmes.

Check the 'Nelson City Presents' Facebook page for the announcement of additional artists.

Musical Director: Peter Rainey









Nelson FARMERS MARKET
NELSON PROVINCIAL FARMERS MARKET INC.

A vibrant market brimming with a diverse range of local and seasonal produce, artisan food and foodstalls

Kirby Lane
105 Bridge Street, Nelson
8.30am to 1.30pm

Your place to be every Wednesday, rain or shine

www.nelsonfarmersmarket.org.nz



ISEL TWILIGHT MARKET

EVERY THURSDAY
ISEL PARK
4:30pm - til DARK

PRODUCE MARKET • LIVE MUSIC • LOCAL CRAFTS
GREAT FOOD • LOCAL ARTISTS




Motueka SUNDAY MARKET
Where the locals shop!

EVERY SUNDAY 8am - 1pm DECKS RESERVE MOTUEKA
motuekasundaymarket.co.nz



Nelson Market
The Nelson Market Saturday 8am-1pm
Monty's Market Sunday 8am-1pm

Monty's
Local Market

Both Markets held in Montgomery Square

www.nelsonmarket.co.nz

FREE



Age Concern Nelson Tasman's

ACTIVITIES FOR SENIORS



Tai Chi

Mon 17 Feb, 10–11am // Founders Heritage Park, Nelson // Meet at the Village Green in the centre

Mon 24 Feb, 10–11am // Botanical Reserve, Nelson // Meet at Milton Street next to the clubhouse

Mon 2 Mar, 10–11am // Decks Reserve, Motueka // Meet by the playground

Mon 9 Mar, 10–11am // Monaco Reserve, Stoke // Meet by the playground

Mon 16 Mar, 10–11am // Isel Park, Stoke // Meet in front of Isel House

Mon 23 Mar, 10–11am // Ngawhatu Park, Stoke // Meet by the clubhouse off Suffolk Road

Spin Poi in the Park

Thu 20 Feb, 10–11am // Anzac Park, Richmond // Meet by the Age Concern office, 62 Oxford Street

Thu 5 Mar, 10–11am // Broadgreen Gardens, Stoke // Meet outside Broadgreen House

Thu 19 Mar, 10–11am // Rose Garden, Takaka // Meet in the middle of the garden

Edible Walk

Fri 21 Feb, 10–11.30am // Orphanage Stream, Stoke // Meet at Saxton Road East by Covent Drive entrance

Fri 13 Mar, 10–11.30am // Railway Reserve, Stoke // Meet at Standish Place

Guided Walk

Tue 25 Feb, 10–11.30am // Maitai Walkway, Nelson // Meet at Miller's Acre Car Park

Tue 24 Mar, 10–11.30am // Motueka Inlet Walk // Meet at Motueka Community Gardens

Sing-a-Long in the Park

Thu 27 Feb, 10–11am // Washbourn Gardens, Richmond // Meet at Fuchsia House

Thu 12 Mar, 10–11am // Faulkner Bush, Wakefield // Meet at the playground

Thu 26 Mar, 10–11am // Isel Park, Stoke // Meet in front of Isel House

Heritage Walk

Tue 3 Mar, 10–11.30am // Isel Park, Stoke // Meet in front of Isel House

Wed 11 Mar, 10–11.30am // Miyazu Japanese Gardens, Nelson // Meet at the carpark, off Atawhai Drive

Mobility Scooter Guided Trail

Fri 20 Mar, 10–11.30am // Railway Reserve, Stoke // Meet at the entrance along from Pic's Peanut Butter factory



**IT'S A HOP, SPRIG &
A JUMP TO YOUR LOCAL**



SPRIG & FERN
TAVERN

**NELSON
HARDY ST
MILTON ST
TAHUNA**

**TASMAN
BRIGHTWATER
MAPUA
MOTUEKA**

UPPER QUEEN RICHMOND

WWW.SPRIGANDFERN.CO.NZ




de
**DUNBAR
ESTATES**
**CELLAR DOOR & CAFÉ
VINEYARD
ACCOMMODATION**

1469 Motueka Valley Highway, Ngatimoti
RD1, Motueka 7196
Ph: 03 526 8598 • 027 500 8400
www.dunbarestates.co.nz

Centre
for Fine
Woodworking

Exhibition of 2019
graduate student work
Fri 13th Dec - Sat 18th Jan
Refinery ArtSpace
3 Halifax St, Nelson



che.co.nz

Founders Heritage Park

A Nelson City Council *venue*



NELSON'S FAVOURITE OUTDOOR MUSEUM

Open 10am - 4:30pm every day

Admission: Locals free with ID,
\$10 Adults, \$5 Children (5-16), \$25 family

THIS SUMMER



SUMMER READS BOOK FAIR

Sat 7 December - Sun 12 January

Free, in the windmill, 10am - 4.30pm.

Fiction for the beach, bach or boat.

JAZZ ON THE VILLAGE GREEN

Most Sundays from
19 January - 12 April, 1.30pm to 4pm.

\$2 entry. Check itson.co.nz for details.



87 Atawhai Drive, Nelson • 03 548 2649

founderspark.co.nz

moxini
home



FURNITURE • HOMEWARES • GIFTS

149C Salisbury Road, Richmond
03 544 1515 • www.moxini.co.nz



moxiniinteriors



moxiniinteriors



Höglund Art Glass

World-renowned art glass created by local
artists Ola & Marie Höglund and their family

VISITORS WELCOME - OPEN DAILY

Closed on public holidays



52 Lansdowne Road, Appleby, Richmond • 03 544 6500

www.hoglundartglass.com

What's on

4 January
Bay Dreams
Festival

1 February
Crusaders
vs
Waratahs

15 February
Opera in
the Park



Trafalgar Park

A Nelson City Council *venue*

For more info and tickets visit:
itson.co.nz

[f/trafalgarvenues](https://www.facebook.com/trafalgarvenues) [@trafalgar_venues](https://www.instagram.com/trafalgar_venues)



SHOP,
DINE,
ENJOY



SHOPPING & DINING PRECINCT

Cnr Hardy & Morrison Sts, Nelson
Open 7 Days • morrissquare.co.nz

Archery Park advertisement featuring a woman archer and a dragon figurine. The text includes "ARCHERY PARK", "HUNT DRAGONS WITH BOW AND ARROW IN AN ANCIENT, STUNNING NATIVE FOREST", and "BOOK ONLINE WWW.ARCHERYPARK.CO.NZ".

**ARCHERY
PARK**

>>
HUNT DRAGONS
WITH BOW AND ARROW
IN AN ANCIENT, STUNNING
NATIVE FOREST

BOOK ONLINE
WWW.ARCHERYPARK.CO.NZ

BOOK ONLINE FOR MORE INFORMATION:

- ENTRY FEES
- BACKUP BOWS
- HUNT 4-9H
- COURSE
- ARCHERY CLUB
- ARCHERY SHOP
- SELF-DRIVE RANGE PROGRAM

• NO EXPERIENCE NEEDED
• CERTIFIED ARCHERY COACH
• AMAZING SCENERY AND BIRDLIFE

© CARLE AIR ADVENTURE PARK, 194 CARLE AIR RD

OPEN 7 DAYS
A WEEK.

CONNINGS

Food Market

More than just a grocery store.
Find fresh berries to real fruit ice
creams and everything in between.

188 Aspley Highway @conningsfoodmarket

Meet The Locals

at Hidden Valleys Waimārama

For a more immersive experience,
guided tours are available.
Check our website for opening times.

**THE Brook Waimārama
Sanctuary**
NELSON NEW ZEALAND

651 Brook Valley Road, Nelson
www.brooksanctuary.org.nz

Road Hogs

MINI GOLF

MILK BAR & FUN CENTRE

OPEN WEDNESDAY TO SUNDAY
15 Selwyn Place next to McDonalds Ph: 542 1542 Website: www.roadhogs.co.nz
Virtual Reality... Mimicool... Novelty Souvenirs... Group Bookings

What's on

8 - 13 December
Super Club Netball

19 December
7 Days Live

21 December
Christmas for the City

29 December
L.A.B & Katchafire

3 January
Bay Dreams Pre-Party

4 January
Bay Dreams After-Party

5 January Sticky Fingers

8 February
Good People Festival
Black Seeds, Laughton Kora,
Sunshine Sound System+

22 February
Kapa Haka Regional
Championships

28 March Tactix Netball

Trafalgar Centre

A Nelson City Council *venue*

For more info and tickets visit:
itson.co.nz

 /trafalgarvenues  trafalgar_venues

THE SUTER ART GALLERY
TE ARATOI O WHAKATŪ

Open 9:30am - 4:30pm Daily*

Free Admission

208 Bridge Street
Nelson 7010

thesuter.org.nz

*Closed on Monday, New Year Day and Good Friday

Founders Heritage Park and Whakatū Marae Present:

THURS 6 FEB WAITANGI DAY

KOHA
ENTRY

INTERNATIONAL KAI FESTIVAL

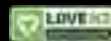
**Share food &
celebrate our
communities**

- Pōwhiri 11am
- Sample kai portions \$5 or \$10
- Performances by cultural groups
- Arts & craft stalls

Thursday 6 Feb 10.30am - 3.30pm

Entry through Founders Heritage Park to Whakatū Marae

Supported by: MINISTRY FOR CULTURE AND
HERITAGE AND PUBLIC PLACE RECYCLING SCHEME



Founders Heritage Park

A Nelson City Council *venue*

MARCHFEST

14 MARCH 2020
 Founders Park - Nelson
 Noon - 9:30pm

BREW ZONE • CRAFT BEER • CIDER • WINE • FOOD
 TASTING BAR • LIVE MUSIC • KIDS ZONE • AND MORE

FEATURING NZ MUSIC LEGENDS: THE CHILLIST

www.marchfest.com

NUMBER 1 LEISURE & RECREATION CENTRE IN THE REGION!

7 x Pools, including Spunk & Down • The Regions only Wave Pool
 Fitness Centre • Leo Mills Group Fitness • SwimMagic Swim School
 Chill Out Kids Programme • Onsite Cafe & Tavern Shop

Richmond Aquatic Centre | 161 Salisbury Road, Richmond | Ph: 03 543 5793 | E: enquiries@richmond.aquaticcentre.govt.nz
www.richmond.aquaticcentre.govt.nz | facebook.com/richmond.aquaticcentre

Flavours of CAIRO

Kebab & Souvlaki



Fresh salads, meat grilled to order
 (Gluten free, vegetarian and vegan options available)

7 Croycher Street, Sydnial Square, Richmond
 OPEN 7 DAYS – FIND US ONLINE FOR OPENING HOURS
 03 544 0203 | www.flavoursofcairo.co.nz
 DINE IN, PICK UP OR DELIVERY AVAILABLE
 DELIVERIES AVAILABLE VIA THE YUMMI APP OR WWW.YUMMI.CO.NZ




Ngarua CAVE

TE KAKA HILL

A MIDDLE EARTH EXPERIENCE




1/2 HOUR DRIVE FROM MOTUEKA S/H 60,
 70KM FROM NELSON

Phone: (03) 528 8093 A/H: (03) 528 8065
 Email: ngaruacaves@gmail.com

CAVE OPEN DAILY FROM SEPTEMBER

Where Should I Be?



1 GP (Doctor) or Pharmacy

2 Urgent After Hours Centre

3 Hospital Emergency Department

GP (DOCTOR) OR PHARMACY


If it's not an emergency see your GP.
 If you don't have a doctor call Healthline, 24/7 on 0800 611 116.
Need to talk? Free call or text 1737 for a trained counsellor.
Community pharmacies for advice and treatment.

URGENT AFTER HOURS CENTRE

For urgent health concerns visit the Medical & Injury Centre on Waimea Road, call Healthline on 0800 611 116 or contact your GP (doctor).

HOSPITAL EMERGENCY DEPARTMENT

If a life is at risk call 111 or go to your nearest Emergency Department (ED). ED is for emergencies only.

TE WAIDORA  Nelson Marlborough Health

www.nmdhb.govt.nz/where-should-i-be



LET'S GET WILD!

NATURE LAND
WILDLIFE TRUST

BRING A PICNIC STAY ALL DAY

1 Hounsell Circle, Tahunānui, Nelson • 03 548 6166 • natureland.nz

PROUD TO BE NOT FOR PROFIT CONSERVATION CHARITY 9.30AM - 4.30PM DAILY (latest entry 3.45pm) • \$12 ADULTS, \$6 CHILDREN

Beacon Hill
- EST 1961 -

Stockists of Magnolia Pearl, La Bottega Di Brunella & Beacon Hill's Closet



STORE HOURS
Thursday & Friday 10am-4pm | Saturday 10am-2pm
205 Papanui Road, Hope www.beaconhillstate.co.nz
www.facebook.com/BeaconHillCountryStore



OUR **MOON** THEN NOW & BEYOND

12 DEC 2019 - 22 MAR 2020
NELSON PROVINCIAL MUSEUM

Presented by
Nelson Provincial MUSEUM
1960-2020

With support from
Ball Foundation
Embassy of the United States of America
Qualtrics Institute

FLIPOUT THE PERFECT DESTINATION FOR INDOOR ENTERTAINMENT

NELSON

Flip Out Trampoline Arena Nelson is fun for all the family. Young or old, full-time flipper or bouncing beginner, we have trampoline activities for you, your family and your friends.

Foam Pit Tumble Track Climbing Wall Parkour Area Wall Trampolines

We cater for birthday parties, and have a lounge area for parents to relax in while the children burn energy.

14 Pascoe St, Nelson Ph 539 6452 nelson@flipout.co.nz

See our website for Opening Hours **WWW.FLIPOUT.CO.NZ**

Great family fun
in Upper Moutere

Sunday 2 February 2020
3pm · Only \$6 per adult

[f /SarauFestival](https://www.facebook.com/SarauFestival)

www.sarafestival.co.nz

Entry \$10 Kids free

The City of Nelson Highland Pipe Band proudly presents

PIPES IN THE Park

Sunday January 26, 5.30-7.30pm

Fairfield House Meadow

Food and beverages available on site, CASH ONLY.
Plus other local musicians & dancers
Not just pipes & drums!

Prudently supported by:



CHILDREN ARE OUR GREATEST INVESTMENT

4 Venues
 Nelson Central
 Victory
 Auckland Point
 Richmond

Activities
 Mini jeeps
 Art Workshops
 Outdoor Adventures
 Pony Club
 Childrens Market
 and more....

Before School
 After School
 Holidays

Ph: 021823411

Website: www.yikesnelson.com

www.yikesnelson.com | sibling discounts

HOLIDAY FUN
 BOOK NOW!

Cable Bay ADVENTURE PARK

NELSON - NEW ZEALAND

FLY THE WORLD FAMOUS SKYWIRE



Nelson's Adventure Destination



Open daily, only 15min from the centre of Nelson
 Skywire - Quad bikes - Horse treks - Paintball
 Argo - Mountain & E Bikes - Licensed Cafe

Book Online or phone 0800 157 300
www.cablebayadventurepark.com

The best way to cross between
 the North and South Islands



Book now at
interislander.co.nz





This comprehensive listing from itson.co.nz includes both Council and community led events for you to plan your summer in the region.

Date	Event	Location
Sun 24 Nov	PAK'nSAVE Richmond Santa Parade	Queen Street, Richmond
Tue 26 Nov – Thu 23 Jan	Cathedral Festival of Christmas Trees	Christ Church Cathedral, Nelson
Sun 1 Dec	Nelson Santa Parade	Trafalgar Street, Nelson
Sun 1 Dec	Willow Bank Heritage Village Open Day	Willow Bank Heritage Village, Wakefield
Mon 2 Dec	The Bee Gees 'Night Fever'	Theatre Royal, Nelson
Wed 4 Dec	Tasman District Summer Concert	Richmond Town Hall
Fri 6 Dec – Sun 8 Dec	Empire Dance Company Presents TRANS4M	Theatre Royal, Nelson
Fri 6 Dec	NBS Starlight Christmas Parade	High Street, Motueka
Fri 6 Dec	Carols in the Park	Brightwater Domain
Fri 6 Dec	Boogie Train and Friends featuring Foxtrots	The Boathouse, Nelson
Sat 7 Dec	Tiki Taane and supporting artists	Tahunanui Beach
Sat 7 Dec – Sun 12 Jan	Summer Reads Book Fair	Founders Heritage Park, Nelson
Sat 7 Dec	Country Christmas Market	Moutere Hills Community Centre, Upper Moutere
Sun 8 Dec	Teddy Bears' Picnic and Lantern Making Workshop	Isel Park, Stoke
Sun 8 Dec	Jingle Bells at Greenmeadows	Greenmeadows Sports Field, Stoke
Sun 8 Dec	Enduro 2 – Wairoa Gorge	Wairoa Gorge Bike Park
Sun 8 – Fri 13 Dec	Super Club Netball	Trafalgar Centre, Nelson
Mon 9 Dec – Sat 18 Jan	Dii Moffat	Refinery ArtSpace, Nelson
Thu 12 Dec	Introduction to Online Research	Richmond Library
Fri 13 Dec	Makete Pō	Maitai Promenade, Trafalgar Centre, Nelson
Fri 13 Dec	Mr Nobody	The Boathouse, Nelson
Fri 13 Dec – Sat 18 Jan	Centre for Fine Woodworking Exhibition	Refinery ArtSpace, Nelson
Fri 13 Dec – Sat 25 Jan	Summer Movies Al Fresco – 18 screenings	Various locations – see schedule on page 9

Sat 14 Dec	Santa's Grotto	Elma Turner Library, Nelson
Sat 14 Dec	South Island Midget Championship	Nelson Speedway, Richmond
Sat 14 Dec	Lantern Celebration	Centre of New Zealand (Botanical Reserve), Nelson
Sat 14 Dec	Golden Bay Santa Parade	Commercial Street, Takaka
Sun 15 Dec	Sport Tasman's Backyard Games	Decks Reserve, Motueka
Tue 17 & Wed 18 Dec	Louise Hawke presents The Nutcracker	Theatre Royal, Nelson
Thu 19 Dec	7 Days Live	Trafalgar Centre, Nelson
Thu 19 Dec	Christmas Makerspace	Motueka Public Library
Fri 20 Dec	Shared Reading	Stoke Library
Fri 20 Dec	Santa at The Boathouse	The Boathouse, Nelson
Sat 21 Dec	The Best 80s Night Ever	The Playhouse Café and Theatre, Mapua
Sun 22 Dec	Holiday Peace in the Park	Anzac Park, Nelson
Sun 22 Dec	Annesbrook Church Christmas for the City	Trafalgar Centre, Nelson
Sun 22 Dec	Carols by Candlelight	Washbourn Gardens, Richmond
Mon 23 Dec	Sport Tasman – Indoor Xmas Movie	Motueka Recreation Centre
Tue 24 Dec	Christmas Storytime	Takaka Memorial Library
Tue 24 Dec	Christmas Music in the Library	Stoke Library and Elma Turner Library, Nelson
Tue 24 Dec	Carols on the Church Steps	Church Steps, top of Trafalgar Street, Nelson
Tue 24 Dec	Carols on the Green	Village Green, Takaka
Thu 26 Dec	Lindy Valente	Kotare Sands Café Bar, Pohara
Fri 27 Dec	Lasasa	The Boathouse, Nelson
Fri 27 Dec	The Great Backyard Cricket Tournament	The Playhouse Café and Theatre, Mapua
Fri 27 Dec – Sun 9 Feb	Summer Film Festival	Suter Theatre, Nelson
Sat 28 Dec & Sat 18 Jan	Gypsy Pickers	Toad Hall Café, Motueka
Sat 28 Dec	Karaoke Showdown	The Playhouse Café and Theatre, Mapua
Sat 28 Dec	South Island Saloon Championship and Demolition Derby	Nelson Speedway, Richmond
Sun 29 Dec	Katchafire with special guests L.A.B.	Trafalgar Centre, Nelson
Sun 29 Dec	A Tribute to Crowded House followed by Killer Kiwi Hits	The Playhouse Café and Theatre, Mapua
Mon 30 Dec	Richmond Market Day	Queen Street, Richmond
Mon 30 Dec	The Great 2019 Quiz Night	The Playhouse Café and Theatre, Mapua

Location

Event

Date

Tue 31 Dec	Central City New Year's Eve Countdown	Upper Trafalgar Street, Nelson
Tue 31 Dec	New Year's Eve with Hobnail	The Boathouse, Nelson
Tue 31 Dec	Gypsy Pickers	Kotare Sands Café Bar, Pohara
Tue 31 Dec	Dr-Reknew & Hummicide	The Mussel Inn, Onekaka, Golden Bay
Tue 31 Dec	Great Gatsby Gangsters and Flappers 1920s NYE Party	The Playhouse Café and Theatre, Mapua
Thu 2–Sat 5 Jan	Nelson Jazz Festival	Various locations
Thu 2 Jan	Wakefield Country Fête	Wakefield Village Hall & Green
Thu 2 Jan	Riwaka Market Day	Riwaka Domain
Thu 2 Jan	Jazz Festival – Washbourn Gardens Twilight Concert	Washbourn Gardens, Richmond
Thu 2 Jan	Higgins Heritage Park Steam Museum & Craft Fair	Higgins Heritage Park, Wakefield
Thu 2 Jan	Andrew London Trio	The Playhouse Café and Theatre, Mapua
Fri 3 Jan	Andrew London Trio	The Boathouse, Nelson
Fri 3 Jan	The Best 1980s Night Ever!!!	The Playhouse Café and Theatre, Mapua
Sat 4 Jan	Bay Dreams	Trafalgar Park, Nelson
Sat 4 Jan	Paul Ubana Jones	The Playhouse Café and Theatre, Mapua
Sat 4 & Sun 5 Jan	Mapua Art Group Exhibition	Mapua Community Hall
Sat 4 & Sun 5 Jan	Mapua Community Library Book Sale	Mapua Community Library
Sat 4 & Sun 5 Jan	Nelson Classic and Vintage Motorcycle Show	Stoke Memorial Hall
Sun 5 Jan	Peace in the Park	Anzac Park, Nelson
Sun 5 Jan	Skatepark Tour – Takaka	Takaka Skatepark
Sun 5 Jan	Motorcycle Swap Meet	Stoke Memorial Hall
Sun 5 Jan	Sticky Fingers	Trafalgar Centre, Nelson
Sun 5 Jan	Willow Bank Heritage Village Open Day	Willow Bank Heritage Village, Wakefield
Sun 5 Jan	Jazz Festival – Founders Park Twilight Concert	Founders Heritage Park, Nelson
Mon 6 Jan	Skatepark Tour – Mapua	Mapua Skatepark
Mon 6–Sun 12 Jan	Golf Croquet World Team Championship	Nelson Hinemoa Croquet Club
Wed 8 Jan	Skatepark Tour – Tapawera	Tapawera Skatepark
Thu 9 Jan	Newtown Rocksteady	The Boathouse, Nelson
Thu 9 Jan	Christmas Makerspace	Motueka Public Library



Thu 9 & Fri 10 Jan	Gary McCormick and Tim Shadbolt	The Playhouse Café and Theatre, Mapua
Fri 10 Jan	Tahuna Summer Sounds	Tahunanui Reserve, Tahunanui Beach
Fri 10 Jan	Treasure Hunt	Washbourn Gardens, Richmond
Fri 10 – Sun 12 Jan	Nelson Super Slam Beach Volleyball	Tahunanui Beach
Fri 10 & Sun 12 Jan	Summer Festival of Harness Racing	Richmond A&P Showgrounds
Sat 11 Jan	Motueka Country Music Festival	Marchwood Park, Motueka
Sat 11 Jan	Skatepark Tour – Motueka	Motueka Skatepark
Sat 11 Jan	Paul Madsen: A Tribute to Queen plus the Super Star Show	The Playhouse Café and Theatre, Mapua
Sun 12 Jan	Skatepark Tour – Richmond	Richmond Skatepark
Sun 12 Jan	Lindy Valente	Kotare Sands Café Bar, Pohara
Tue 14 Jan	Book Chat	Motueka Public Library
Tue 14 Jan	Shared Reading	Elma Turner Library, Nelson
Wed 15 Jan	Box of Birds	Murchison Public Library
Wed 15 Jan	Skatepark Tour – Brightwater	Brightwater Skatepark
Thu 16 Jan	Techy Time	Motueka Public Library
Thu 16 – Fri 24 Jan	Nelson Summer Shakespeare – Romeo and Juliet	Fairfield House Meadow, Nelson
Fri 17 Jan	Tahuna Summer Sounds	Tahunanui Reserve, Tahunanui Beach
Fri 17 & Sat 18 Jan	Fleetwood Mac and Stevie Nicks Tribute	The Playhouse Café and Theatre, Mapua
Sat 18 Jan	Wakefield Roaster 10k & 5k	Faulkner Bush, Wakefield
Sat 18 Jan	NZ Midget Grand Prix	Nelson Speedway, Richmond
Sat 18 Jan	Skatepark Tour – Nelson	Neale Park Skatepark, Nelson
Sat 18 Jan	Golden Bay A&P Show	Golden Bay Recreation Park, Takaka
Sat 18 Jan	Art Exhibition	Queens Gardens, Nelson
Sat 18 Jan	Amazing Race	Moturoa/Rabbit Island
Sat 18 & Sun 19 Jan	Nelson Summer Kite Festival	Neale Park, Nelson
Sun 19 Jan	Summer Celebration Retro and Vintage Fair	Stoke Memorial Hall
Sun 19 Jan	Lindy Valente	Kotare Sands Café Bar, Pohara
Sun 19 Jan – Sun 12 Apr	Jazz on the Village Green (most Sundays)	Founders Heritage Park, Nelson
Mon 20 Jan – Sat 22 Feb	Album and The Making of Bigger Things	Refinery ArtSpace, Nelson
Tue 21 Jan	Outdoor Summer Picnic	Motueka Public Library

Date

Event

Location

Tue 21 Jan	Amazing Race	Easby Park, Richmond
Wed 22 Jan	Box of Birds	Takaka Memorial Library
Wed 22 Jan	Poets in the Park	Botanical Reserve, Nelson
Fri 24 Jan	Mako Road	The Boathouse, Nelson
Fri 24 Jan	Share Reading	Elma Turner Library, Nelson
Sat 25 Jan	Tata Titanic Cardboard Boat Race	Tata Beach, Golden Bay
Sat 25 & Sun 26 Jan	Youth Physical Theatre Weekend	Riverside Community Centre, Lower Moutere
Sat 25 & Sun 26 Jan	Romeo and Juliet – Nelson Summer Shakespeare	Riverside Community Oval, Lower Moutere
Sun 26 Jan	Pipes in the Park 2020	Fairfield House, Nelson
Sun 26 Jan	Gypsy Pickers	Kotare Sands Café Bar, Pohara
Sun 26 Jan	New World Teddy Bears' Picnic	Thorp Bush, Motueka
Wed 29 & Thu 30 Jan	Romeo and Juliet – Nelson Summer Shakespeare	Washbourn Gardens, Richmond
Thu 30 & Fri 31 Jan	Buskers on Trafalgar	Upper Trafalgar Street, Nelson
Thu 30 & Fri 31 Jan	Buskers at the Boathouse	The Boathouse, Nelson
Fri 31 Jan	Adele, Madonna, and Crowded House Tribute Night	The Playhouse Café and Theatre, Mapua
Fri 31 Jan & Sat 1 Feb	Romeo and Juliet – Nelson Summer Shakespeare	Isel Park, Stoke
Sat 1 – Sun 2 Feb	Buskers on the Church Steps	Church Steps, top of Trafalgar Street, Nelson
Sat 1 Feb	Super Rugby – Crusaders v Warratahs	Trafalgar Park, Nelson
Sat 1 Feb	Trafalgar Street Market Day	Trafalgar Street, Nelson
Sat 1 Feb	Vintage Machinery Show 2020	Higgins Heritage Park, Wakefield
Sun 2 Feb	Buskers at Mapua Wharf	Mapua Wharf
Sun 2 Feb	Peace in the Park	Anzac Park, Nelson
Sun 2 Feb	Romeo and Juliet – Nelson Summer Shakespeare	Theatre Royal, Nelson
Sun 2 Feb	Willow Bank Heritage Village Open Day	Willow Bank Heritage Village, Wakefield
Sun 2 Feb	Sarau Festival	Moutere Hills Community Centre, Upper Moutere
Tue 4 – Fri 7 Feb	Board Games Galore	Motueka Public Library
Wed 5 Feb	Paul Bosauder – Tierra Y Mar	Nelson Musical Theatre
Wed 5 Feb – 25 Mar	Eddylane 5km Series (Wednesdays)	Depart from Eddylane Brewery & Pizzeria, Richmond
Thu 6 Feb	International Kai Festival	Founders Heritage Park and Whakatū Marae, Nelson

Fri 7 Feb	Gypsy Pickers	Kotare Sands Café Bar, Pohara
Fri 7 Feb	Tuna E Hoe Ana/Paddling with the Eels	Kerr Bay, St Arnaud
Fri 7 – Fri 28 Feb	The N Files	Studio One, Nelson
Sat 8 Feb	Good Peoples	Rutherford Park, Nelson
Sat 8 Feb	Tasman Asian Night Food Fair	Washbourn Gardens, Richmond
Sat 8 Feb	Paul Madsen: A Tribute to Queen plus the Super Star Show	The Playhouse Café and Theatre, Mapua
Sun 9 Feb	Family Picnic	Washbourn Gardens, Richmond
Wed 12 Feb	Go By Bike Day	Takaka, Motueka, Richmond, Nelson
Fri 14 Feb	Library Lovers Day	Elma Turner Library, Nelson
Sat 15 Feb	Opera in the Park	Trafalgar Park, Nelson
Sat 15 Feb	Mag and Turbo Supercup	Nelson Speedway, Richmond
Sat 15 Feb	The Best 1980s Night Ever!!!	The Playhouse Café and Theatre, Mapua
Sat 15 Feb	CCF Racing for the Kids	Nelson Speedway, Richmond
Sat 15 Feb	Starlet of NZ	Nelson Musical Theatre
Sat 15 Feb	Murchison A & P Show	Murchison Sport, Recreation and Cultural Centre
Sat 15 Feb	Family Bike Fun – Golden Bay	Golden Bay Recreation Park, Takaka
Sun 16 Feb	Family Bike Fun – Motueka	Saltwater Baths, Motueka
Sun 16 Feb	Adam Summer School Finale Concerts	Nelson Centre of Musical Arts
Sun 16 Feb	Nelson Wine & Food Festival	Richmond A&P Showgrounds
Sun 16 & Mon 17 Feb	NT Live Series: The Lehman Trilogy – Live on Screen	Suter Theatre, Nelson
Mon 17 – Sun 23 Feb	Early Music Festival	Nelson Centre of Musical Arts
Mon 17 Feb	Seniors Tai Chi	Founders Heritage Park, Nelson
Tue 18 Feb	Baroque Flute Concerto	Nelson Christ Church Cathedral
Thu 20 Feb	Seniors Spin Poi in the Park	Anzac Park, Richmond
Thu 20 Feb – Thu 9 Apr	NCMA Lunchtime Concert Series (Thursdays)	Nelson Centre of Musical Arts
Fri 21 Feb	Coast and Ocean	The Boathouse, Nelson
Fri 21 Feb	Gypsy Pickers	Toad Hall Café, Motueka
Fri 21 Feb	Seniors Edible Walk	Orphanage Stream, Stoke
Sat 22 Feb	Swap Meet – Bazaar, Vintage Car Club	Nelson Speedway, Richmond
Sat 22 Feb	Art Haven – Art and Creativity Workshop	Collingwood

Date

Event

Location

Sat 22 Feb	ITM Colour Run	Golden Bay Recreation Park, Takaka
Sat 22 Feb	Sprig & Fern Trolley Derby	Queen Street, Richmond
Mon 24 Feb	Seniors Tai Chi	Botanical Reserve, Nelson
Mon 24 – Fri 28 Feb	Angles of Perception – Woven Form	Refinery ArtSpace, Nelson
Tue 25 Feb	Seniors Guided Walk	Maitai Walkway, Nelson
Wed 26 Feb	Flash Electrical Beach Fun Day	Kaiteriteri Beach
Thu 27 Feb	Seniors Sing-a-Long in the Park	Washbourn Gardens, Richmond
Fri 28 Feb	Lunchtime Artist Demonstration – Jill Richards	Wall To Wall Art Gallery, Nelson
Fri 28 Feb	Gypsy Pickers	The Vic Brewbar, Nelson
Sat 29 Feb	South Island Superstock Championship	Nelson Speedway, Richmond
Sat 29 Feb & Sun 1 Mar	Lake Rotoiti Power Boat Regatta	Kerr Bay, St Arnaud
Sat 29 Feb & Sun 1 Mar	Buller Festival	Murchison
Sun 1 Mar	Willow Bank Heritage Village Open Day	Willow Bank Heritage Village, Wakefield
Sun 1 Mar	Peace in the Park	Anzac Park, Nelson
Sun 1 Mar	Children's Day	Richmond Aquatic Centre
Mon 2 Mar	Seniors Tai Chi	Decks Reserve, Motueka
Tue 3 Mar	Seniors Heritage Walk	Isel Park, Stoke
Wed 4 Mar	Good Habits	The Boathouse, Nelson
Thu 5 Mar	Seniors Spin Poi in the Park	Broadgreen Gardens, Stoke
Thu 5 Mar	Michelle Nadia	The Boathouse, Nelson
Fri 6 Mar	Tango Libre	The Boathouse, Nelson
Sat 7 Mar	Eclipse	Theatre Royal, Nelson
Sat 7 Mar	Kaiteriteri Gold Half Marathon	Kaiteriteri Beach
Sat 7 Mar	Summer Tango in the Queens Gardens	Queens Gardens, Nelson
Sat 7 Mar	Interislander The Big Tahuna Ocean Swim	Tahunanui Beach
Sun 8 & Mon 9 Mar	NT Live Series: Fleabag – Live on Screen	Suter Theatre, Nelson
Mon 9 Mar	Seniors Tai Chi	Monaco Reserve, Stoke
Wed 11 Mar	Seniors Heritage Walk	Miyazu Japanese Gardens, Nelson
Thu 12 Mar	Seniors Sing-a-Long in the Park	Faulkner Bush, Wakefield



Thu 12 – Sat 14 Mar	Marchfest	Founders Heritage Park, Nelson
Fri 13 Mar	Seniors Edible Walk	Railway Reserve, Stoke
Sat 14 Mar	King of the Clay	Nelson Speedway, Richmond
Sat 14 Mar	Gypsy Pickers	The Vic Brewbar, Nelson
Sun 15 Mar	Knapps Lawyers Boulder Bank Walk	Boulder Bank, Nelson
Sun 15 Mar	Port Nelson Open Day <small>(check Port Nelson's Facebook page for date confirmation)</small>	Port Nelson
Sun 15 Mar	Sport Tasman Muddy Buddy Adventure Run	Tasman School
Mon 16 Mar	Netball – Tactix v Steel	Trafalgar Centre, Nelson
Mon 16 Mar	Seniors Tai Chi	Isel Park, Stoke
Thu 19 Mar	Seniors Spin Poi in the Park	Rose Garden, Takaka
Fri 20 Mar	Mobility Scooter Guided Trail	Railway Reserve, Stoke
Fri 20 – Sun 22 Mar	Summer Challenge (multi-sport)	Trafalgar Centre, Nelson
Sat 21 Mar	Mapua Boat Club Regatta	Mapua Wharf
Sun 22 Mar	Race Unity Day	Victory Square, Nelson
Sun 22 Mar	Art Haven – Painting Intensive – Paper, Print, Paint	Collingwood
Mon 23 Mar	TINA Simply The Best	Theatre Royal, Nelson
Mon 23 Mar	Seniors Tai Chi	Ngawhātu Park, Stoke
Tue 24 Mar	Seniors Guided Walk	Motueka Inlet
Thu 26 Mar	Seniors Sing-a-Long in the Park	Isel Park, Stoke
Sat 28 Mar	Relay For Life	Richmond A&P Showgrounds
Sat 28 Mar	Beacon Hill Country Market	Beacon Hill Estate, Hope
Mon 30 Mar	Shodo Daisuki Nakama and Raking Through the Ashes	Refinery ArtSpace, Nelson
Wed 1 – Thu 30 Apr	Nelson Heritage Festival	Various locations around Nelson and Tasman
Fri 3 Apr	Positive Ageing Expo	Headingley Centre, Richmond
Fri 3 Apr	Nelson Dawn Rave	Kirby Lane, Nelson
Thu 3 – Sat 5 Apr	Basketball Blitz – Preseason Games, NZ National Basketball League	Saxton Stadium, Stoke
Sat 4 – Wed 8 Apr	Baseball U13 National Championship	Saxton Field, Stoke
Sun 5 Apr	City2Saxton	Victory Community Centre to Saxton Field, Stoke
Sun 5 Apr	Wakefield Apple Fair	Willow Bank Heritage Village, Wakefield
Sun 5 Apr	Peace in the Park	Anzac Park, Nelson





× BAY DREAMS ×

December 29th

KATCHAFIRE & L.A.B

TRAFALGAR CENTRE

• TICKETS - TICKETSPACE.NZ

January 3rd

BAY DREAMS PRE PARTY

SHAPESHIFTER & FRIENDS

TRAFALGAR CENTRE

• TICKETS - TICKETSPACE.NZ

January 4th

BAY DREAMS FESTIVAL

TRAFALGAR PARK

• TICKETS & LINEUP - BAYDREAMS.CO.NZ

January 4th

**BAY DREAMS
AFTER PARTY**

TRAFALGAR CENTRE

• TICKETS - TICKETSPACE.NZ

January 5th

STICKY FINGERS

TRAFALGAR CENTRE

• TICKETS - TICKETFAIRY.COM