

OUR NELSON

Issue 27 • 9 August 2017

Keep up to date with the latest news from Nelson City Council

Pick up a programme today!

The full Nelson Arts Festival programme is available at nelsonartsfestival.co.nz or as a hard copy from Nelson City Council's Customer Service Centre, Theatre Royal, libraries, retailers, cafés and key visitor outlets in the region.



nelsonartsfestival.co.nz



The countdown is on to the 23rd Nelson Arts Festival

The 23rd Nelson Arts Festival programme has launched, with a stellar line-up of national and international talent coming to Nelson from 11–27 October 2017.

With Early Bird tickets now on sale, it's time to book your tickets and plan your fill of theatre, cabaret, clowning, music, dance, comedy, the Page & Blackmore Readers and Writers programme, along with free music and fun community events.

Prepare to have your socks knocked off by *That Bloody Woman*, as suffragist Kate Sheppard raises hell in a punk-rock-opera, taking on the establishment and changing the lives of women worldwide.

Hudson & Halls Live! recreates the hilarity and chaos of New Zealand's best loved TV chefs. Join the studio audience of the Hudson & Halls Christmas Special – complete with turkey stuffing and ice cream castles – for a laughter-fuelled homage to these much-loved TV characters.

Don't miss *Maungatapu* – Nelson's notorious true tale of murder brought to life. Last year's Theatre in Development project is this year's World Premiere; a story of greed, murder, betrayal and remorse, framed by gold rush era Nelson.

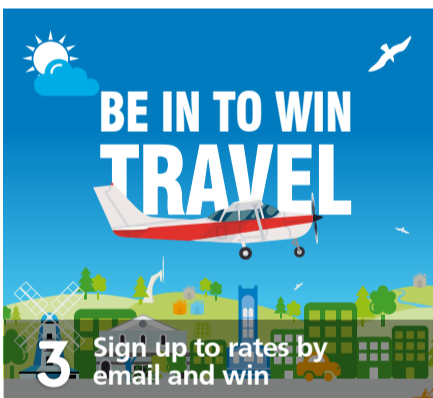
All the way from Switzerland is the award-winning family show *Pss Pss*, a delightful and captivating performance that harks back to the era of silent films.

Musicians from as far afield as South Africa, Germany, Ireland, the USA, Canada and Australia will be sharing their songs and stories with us throughout the Festival. *Big Daddy Wilson* will be a blues highlight, with his latest album *Neckbone Stew* including a song called 'Peanut Butter Pic'.

The Page & Blackmore Readers and Writers programme again brings famous authors to town. There will be 16 events over two weekends, featuring writers from all around the country in discussion about, and reading from, their own work. Watch out for names like Catherine Chidgey, Nicola Galloway and Colin Hogg. Plus there are two Thinking Brunches, which are panel discussions sure to challenge everyone who attends.

Visual Arts are also a feature in this year's Festival, with a photographic exhibition in Bank Lane, plus the

Continued on page 2



3 Sign up to rates by email and win



4 Splashing around for a combined 130 years



6 Inspiring youth in our region



What a line-up!



Hudson & Halls Live!



That Bloody Woman



Big Daddy Wilson



Sunny Ray and the Magnificent Moon



Maungatapu



The Orchid and the Crow



Pss Pss



Otto & Astrid - Eurosmash!

The countdown is on to the 23rd Nelson Arts Festival

Continued from page 1

opportunity to watch art being made in Founders Heritage Park with *Art in the Park* and *You do the Maths*. And Miriam Hansen's work will be on display in the Festival venues at Founders Heritage Park.

This year's Festival runs for 17 days, finishing with the iconic Masked Parade & Carnivale on Friday 27 October. The theme is 'We are the World' and will be a joyous, family-centred night of fun to wrap up the 23rd Nelson Arts Festival. Enrolments are open now for everyone to take part in this fabulous community event.

Festivals Team Leader Axel De Maupeou says this year's line-up will once again bring world-class

shows and performers to Nelson.

"We're very privileged to be able to bring so many brilliant performers to Nelson – it's such a great annual event.

"The Festival's home base will be at Founders Heritage Park, with shows dotted throughout our great Nelson venues. I look forward to seeing everyone out and about enjoying this great programme."

Deputy Mayor Paul Matheson says the Festival is proof of Nelson's enthusiasm for culture and creativity.

"We are lucky to have this event as an annual feature in our calendars.

"The arts is an important part of who we are – and I look forward to sharing in this Festival with you. I hope to see many of you out enjoying this wonderful programme."

EARLY BIRD TICKETS ON SALE UNTIL 31 AUGUST.

nelsonartsfestival.co.nz



Nelson Tasman Civil Defence Emergency Management planning ahead

Nelson Tasman Civil Defence Emergency Management (CDEM) has reviewed its Group Plan and is now calling for public feedback.

The Plan, reviewed every five years, identifies the region's hazards and risks and how Civil Defence will effectively manage these across its four key activities of risk reduction, readiness, response and recovery.

"It's a key part of what we do as it helps us understand our risks, sets out how we intend to be prepared, how we will react when things go wrong, and how we will recover afterwards," says CDEM Group Controller, Roger Ball.

It has been updated by the Nelson Tasman CDEM Group, which is a partnership between Nelson City and Tasman District Councils, and its key partner agencies who are involved in the delivery of emergency management.

Mr Ball says planning for an emergency is an important part of their process, but it's also about awareness.

"Planning promotes deep thinking about how we as a region can best manage our risks. It also helps to empower our communities and make them aware of what they can do to be resilient," he says.

The key questions Nelson Tasman CDEM are looking for feedback on are:

- Have we got the right emphasis in our plans?
- Are you aware of the natural hazards in your community?
- What information do you need during large emergency events (such as floods and earthquakes)?
- How do you access it?
- Is there one thing CDEM could be doing differently?

The Draft Group Plan can be found on the Nelson Tasman CDEM, Nelson City Council and Tasman District Council's websites.

Feedback is open until 3pm on 4 September 2017.

nelsontasmancivildefence.co.nz

nelson.govt.nz

tasman.govt.nz



Sign up to rates by email and win

Choose to receive your rates and water accounts by email now and go in to win a \$350 travel voucher.

Sign up to pay by direct debit at the same time and the total prize increases to a \$500 travel voucher!

The only catch is you must sign up by 4 September to be in to win.

Already getting your rates notice via email? Then you are already in to win the \$350 voucher.

Once you sign up, you will no longer receive invoices via the post. If you wish to go back to postal invoices in the future, just email us at customer.service@ncc.govt.nz.

Remember to add our email address customer.service@ncc.govt.nz to your safe sender list.

Conditions: The competition is open to Nelson City Council ratepayers only. Councillors and Council staff are not eligible to enter. The winner will be drawn on 20 September and notified by email. The prize cannot be exchanged for cash.

To fill in a direct debit form go to nelson.govt.nz (search = rates by email).

nelson.govt.nz

Search = rates by email

Council tackling marine pests head on

Council has launched a Small Scale Management Programme (SSMP) relating to the marine pest Mediterranean fanworm (*Sabella spallanzanii*), across the whole marine area of Nelson City.

The programme aims to provide for the control of *Sabella* in Nelson City over the next three years, to reduce its spread in the region and to other areas, and to reduce its adverse effects on Nelson economy, environment and taonga.

The SSMP has been put in place to prevent the establishment of *Sabella* in areas where it is currently not established. In areas where it has established, the plan will aim to contain, control and, where feasible, eradicate it. *Sabella* is an invasive organism

that competes with native species and with species of farmed seafood such as mussels.

This programme is also taking place across the entire top of the South and shows a concerted regional approach.



Community Investment Fund agreement allocations made for 2017/18

The latest Community Investment Fund round saw over \$73,000 to be distributed across various community groups in Nelson.

Nelson City Council's Community Investment Fund agreements have been allocated by the Community Investment Funding Panel – a panel of community members, established in 2015 following a review of the Community Assistance Policy.

The funding panel is made up of four community representatives and one Council staff member, and distributes approximately \$300,000 annually, with up to \$50,000 for small scale projects, to organisations with a focus on social development activities that support the well-being

of the wider Nelson community.

The Community Investment Funding Panel recently met to consider and allocate the available funding for agreements to the total of \$73,820. This latest funding round has been awarded to 13 applicants from a wide range of not-for-profit organisations, delivering social development services in Nelson.

In addition to this funding, a further \$183,380 has already been assigned to existing agreements allocated in previous years as multi-year funding, bringing the 2017/18 Community Investment Fund

allocation to \$257,200. A further \$50,000 will go to Community Investment Fund small grants. These are grants up to \$2,500 and applications are open now for this fund with a closing date of 18 August 2017.

"It's great to see so many organisations being supported to continue their important work out in the community," says Chair of Council's Community Services Committee, Gaile Noonan.

The latest funding round decisions are as follows:

Name of organisation	One sentence summary	Approved
IHC New Zealand Incorporated	To work with existing organisations to increase volunteer opportunities for people in Nelson with intellectual disabilities.	\$4,000
Male Room Incorporated	To provide males with guidance and support to strengthen their family and community connections.	\$8,000
Neighbourhood Support Nelson	To set up and support neighbourhood support groups and foster community cohesion and resilience.	\$7,000
Nelson Community Christian Night Shelter Trust	To provide temporary accommodation for people in Nelson.	\$3,000
Nelson Community Foodbank Trust	Provide food parcels at no cost to people in the Nelson community facing short-term hardship, and specifically to purchase a laptop and printer and contribute to rent costs.	\$6,350
Nelson Environment Centre	Kai Rescue project: to rescue food that is edible but not saleable and redistribute it to charities and community groups.	\$4,995
Nelson Multicultural Council	To enhance relationships, integration and improve communication through intercultural awareness.	\$6,000
New Zealand Council of Victim Support Groups Incorporated	To ensure a range of practical and emotional support services are provided to Nelson victims of crime and trauma.	\$6,000
Postnatal Depression Support Network Nelson Incorporated	Confidential and professional counselling for mothers in need.	\$5,500
Q-Youth	An exploration of the issues and concerns facing queer youth in our region through community drama.	\$4,000
Stoke School	Positive inter-generational connections and reciprocal learning relationships.	\$4,600
Victory Community Centre	To deliver the Victory on the Move programme of activities.	\$3,375
Volunteer Nelson	To increase volunteer recruitment and participation in volunteer activities by people over 60 years of age.	\$11,000
Total		\$73,820

Splashing around for a combined 130 years

For many of us, swimming in Riverside pool and Nayland pool was a part of growing up in Nelson.

This year, we will be celebrating two milestones – Riverside Pool's 90th anniversary and Nayland Pool's 40th anniversary.

Since November 1927, we have been learning to swim, swimming laps, competing in the house relay evenings, swinging off the rope swing or lying down on the hot concrete.

Do you have a story to share about Riverside or Nayland pools? You can share your story at clmnz.co.nz/riverside/riverside-history/



1927 opening of Municipal Pool. Nelson Provincial Museum Collection, FNJ 6x8 21



Pedestrian refuge islands

With the new pedestrian refuge island now in place on Rutherford Street linking with the changed layout in Anzac Park, it's a good time to remind everyone how to use them properly.

Pedestrians

These refuges are not zebra crossings! Pedestrian refuge islands are designed to give you a chance to cross a street in two stages. The refuge gives you a safer place to wait before making the second stage of the crossing. It is your responsibility to cross only when there is a break in the traffic. Please check before you step!

Drivers

At pedestrian refuges drivers don't have to stop for pedestrians, but you must be able to stop if you have to. Please remember that stopping for pedestrians using refuge islands creates a hazard for following vehicles.



It's that Taiwan Cherry time of year

Council is offering free removal of Taiwan Cherry, an invasive garden pest tree that blooms at this time of year.

Council contractors have now controlled approximately 12,000 Taiwan Cherry trees from gardens and reserves around Nelson. The focus remains on removing residual trees which are recognisable by their bright pink blossoms in late July and early August.

While this pink invader looks pretty, it poses a real threat to the environment. Its seed is spread by birds, and it can dominate the landscape, crowding out native trees that would otherwise supply food for birds all year round.

Council contractors will be contacting landowners with known trees over the next few weeks, to arrange tree removal free of charge.

Council urges anyone who suspects they have Taiwan Cherry on their property, and hasn't

been contacted, to get in touch to arrange for the tree/s to be assessed. Replanting with native species such as kowhai, rata or cabbage trees to benefit the local bird population is recommended.

For more information visit nelson.govt.nz (search phrase = Taiwan Cherry).

To discuss tree removal, contact Richard Frizzell, Environmental Programmes Adviser, phone 546 0423 or email richard.frizzell@ncc.govt.nz.



nelson.govt.nz

Search = Taiwan Cherry

Showing support for our locals

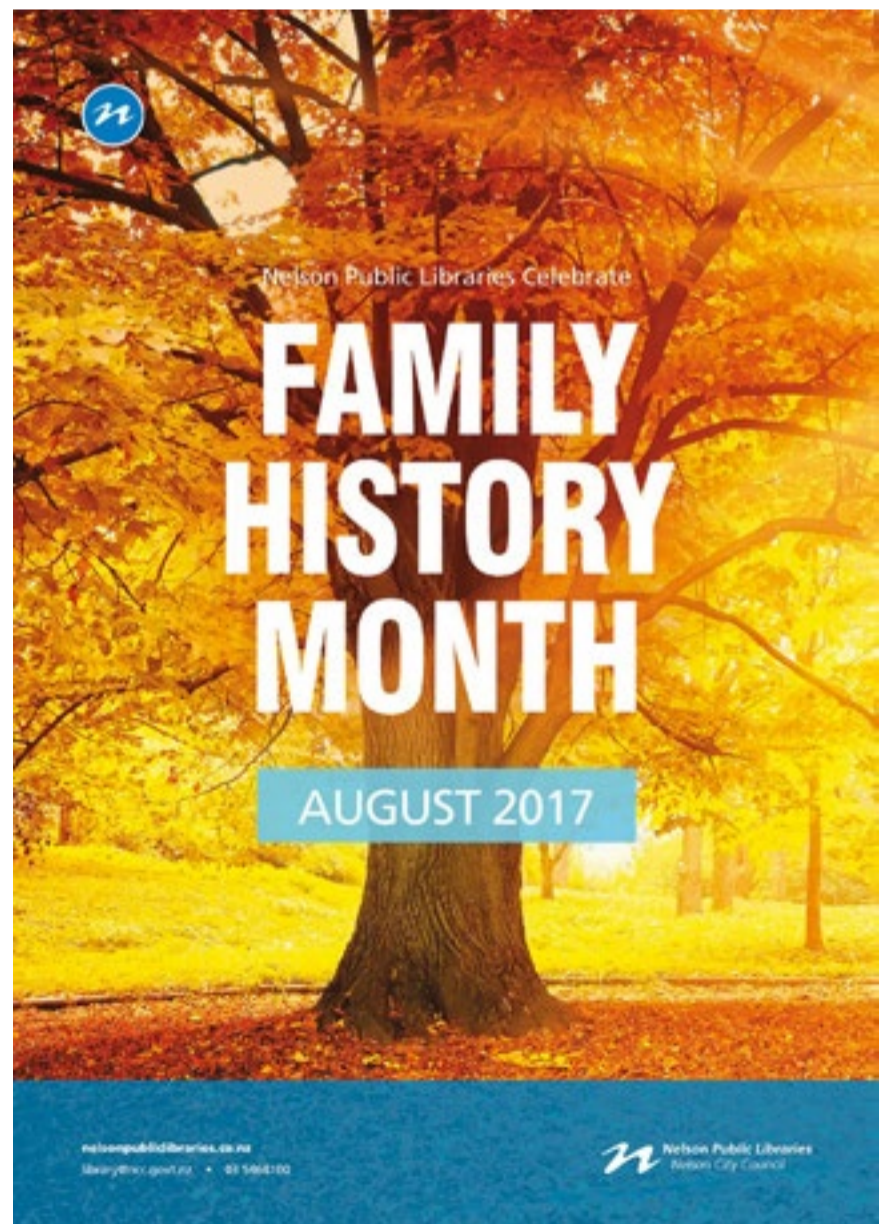
At the end of July, a get together was organised for dairy and store owners, to speak with Councillors and support agencies about safety in our city.

This was well-attended from both business owners and support services, with Police, Neighbourhood Support and Youth Justice joining Council staff in a collaborative discussion.

The event was organised following a recent increase in robberies at dairies and stores throughout the region. As a Council, we wanted to show our support for these owners and give them an opportunity to support each other.

Dairies are a key part of New Zealand culture and a place where communities should feel comfortable going to. Working together and having support from the relevant agencies and the community can help prevent this unacceptable behaviour from occurring.

As a city, we can all play our part, so why not head down to your local dairy to show your support.



Natural hazards community feedback

Council has recently consulted on three natural hazards topics – earthquake fault, liquefaction and flood hazard.

This included sharing property specific information with landowners who may be affected by these hazards; gathering feedback on technical information held for each hazard, as well as thoughts from the community on how we should be responding. We had good community attendance at our information sessions held in May.

We received nearly 450 individual responses, including site specific property feedback and comments from people on how Council should be responding to the hazard information. We are now in the process of analysing this feedback. Staff will be following up with some landowners and also arranging site visits where required.

The majority of feedback received related to the new flood hazard modelling. Many people provided information about their own property and how particular site characteristics may affect flood hazard potential. This information helps Council understand the implications of the model outputs on the ground.

In relation to fault hazard, a number of respondents were aware of the fault hazard risk for their property, as Council previously

consultated with the community in 2013. People provided information on their particular site characteristics and also how their own property has responded during recent earthquakes.

With regard to the liquefaction study area at Tahunanui, people provided information on the particular ground conditions of their site or foundations. Another common response was that the liquefaction risk could be addressed through building / foundation design.

Many respondents queried why the hazard information was being noted on their LIM report when the hazard map shows that their land is affected but not their house. This is because a LIM report contains information relevant to the land, as well as the buildings, and the report includes a map that shows the location of the hazard on the site.

The community feedback received will help us to refine the hazards information we hold, including how hazards information is noted on property files. It will also help inform the natural hazards section of the Nelson Plan (resource management plan) which is currently under review.



From L-R Volunteer Nelson's Gordon Oldfield and his dog Ernie, Youth and Community Works' Sally Wood and Paul McConachie, Nelson College students Rohan O'Neill-Stevens and Neil Macmillan (both involved with the environmental Hui run on the 30 July) and Tasman District Council's Lani Evans.

Inspiring youth in our region

Council has been working in partnership with other organisations to inspire young people to get out and enjoy their community more.

Funded by the Ministry of Youth Development, and supported by Nelson City Council, Tasman District Council and Volunteer Nelson, the most recent project featured a series of Event Management training workshops for young people, giving them an opportunity to learn from local industry professionals.

Youth and Community Works developed and delivered the interactive event management workshops, providing an introductory insight into the field of event management, with the hope of inspiring, motivating and providing opportunities for workshop participants to turn their ideas into events for all young people to enjoy.

The workshops covered

topics on developing ideas, action planning, financial planning, risk management, marketing/promotion, and implementing the event.

The project saw 84 young people involved with events management training; performance and technical training; and awareness training workshops. They also planned and ran 10 events across both Nelson and Tasman, establishing a Nelson Tasman Youth Events crew, with a total of 1137 volunteers across all events and workshops.

"Hopefully we have inspired a new wave of young people keen to get more events happening in their communities," says Youth and Community Works' Paul McConachie.

Chair of Council's Community Services Committee, Councillor Gaile Noonan, says these initiatives help to create a stronger community.

"Inspiring and supporting our youth to be more involved in the community is so important. It's great to see so many young people involved and getting out there."





Progress on Oldham Creek bridge replacement



Work is well underway on replacing the Oldham Creek Bridge on Atawhai Crescent.

However, three heavy rainfall events since the project started have caused a two week delay due to high water flows in the creek.

The road closure has been extended but subject to any further weather delays, the contractor is on track to have the road open again by mid-August.

The recent focus of the project has been to complete the culvert units in the waterway, followed by rebuilding the road over the new culvert and replacing the footpath bridge upstream.

Once the road and footpath reopen, there will be some temporary fencing in place until the permanent culvert hand rails are installed.



MEETINGS

The following meetings of the Nelson City Council have been scheduled.

Council meeting – hearing of submissions on the Draft Freedom Camping Bylaw
9am 9 August

Council meeting
9am 10 August

Planning and Regulatory Committee
9am 17 August

Commercial Subcommittee
9am 18 August

Sports and Recreation Committee
9am 22 August

Joint Shareholders Committee
1.30pm 22 August

Council meeting – to deliberate on submissions to draft Freedom Camping Bylaw
9am 23 August

Works and Infrastructure Committee
9am 24 August

Resource Management Act Hearings – RM 165175 – Gaire Thompson, 1 Boulder Bank Drive
9am 25 August

Regional Pest Management – Joint Committee
1.30pm 29 August

Saxton Field Committee – Netball Pavilion, Saxton Field
9.30am 30 August

Community Services Committee
9am 31 August

Council meeting – to deliberate on submissions to draft City Amenity Bylaw 2017
9am 5 September

Other Meetings

Nelson Youth Council
1pm 14 August

Notes:

1. Unless otherwise shown, the meetings will be held in the Council Chamber, Civic House, Trafalgar Street, Nelson.
2. A public forum is held during the initial period of the Committee/Council meeting. Anyone wishing to speak at this public forum is asked to give prior advice to an Administration Adviser on 546 0200.
3. Agendas will be available for perusal at the Customer Service Centre in Civic House, or at Nelson Public Libraries, two days prior to the meeting.
4. Agendas and minutes for Council meetings can be viewed on Council's website nelson.govt.nz.

nelson.govt.nz/meetings

Let's get our recycling right

Well done Nelson, we're recycling much more since the wheelie bins were introduced last year.

To keep everything running smoothly, please make sure you are putting the right things in your wheelie bin. And remember – *you only need to put your wheelie bin out for collection when it is full.*

In your wheelie bin:

- Plastics 1–7
- Metal cans and tins
- Paper
- Light cardboard and corrugated cardboard

Please remember – no plastic bags or polystyrene!

In your blue crate: Glass only – empty, clean unbroken glass bottles and jars (clear, brown, blue and green).

Please be aware that overfilled or non-rigid glass recycling containers will not be collected. Your crate should only be filled to the top (not mounted up) and the weight must not exceed 14kg.

For all you need to know about recycling, including collection calendar for the year, visit Council's website.

nelson.govt.nz

Search = recycling

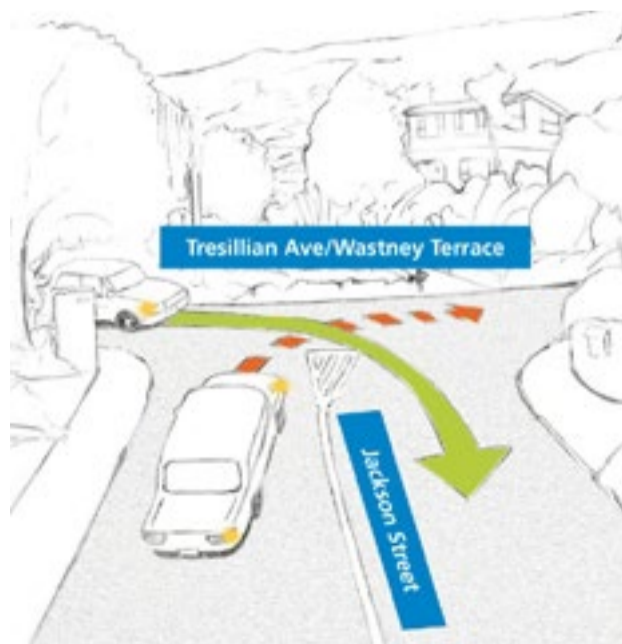
Who gives way at the T?

It's over five years since the give way rules changed but at some intersections there is still confusion.

At an uncontrolled T-intersection (uncontrolled means when there are no signs or signals to tell you what to do), all traffic from a **terminating road** (bottom of the T) should give way to all traffic on a **continuing road** (top of the T). This makes it the same as T-intersections where there are stop or give way signs on the terminating road.

Think: Top of the T goes before me.

In this real life example, traffic turning out of Jackson Street must give way to traffic going along Tresillian Ave/Wastney Terrace. Jackson Street is the bottom of the T, the others are the top of the T.





NBus – friendly, warm, convenient!

Over the winter months, NBus is a great option for getting where you need to go without having to thaw out an icy car, worry about parking or the cost of fuel!

As well as the service between Nelson and Richmond that runs every 15 minutes at peak times via Tahunanui or Bishopdale (Routes 1 and 2), there are really handy NBus services operating in several Nelson neighbourhoods.

These routes, numbered three to six, are especially flexible because they operate on the "hail and ride" system. That means you don't have to wait at a formal bus stop. You can wave down the bus anywhere along the route where it is safe (and legal) for the bus to stop. Just make sure you stand where the driver can see you and give them a big wave so they know you want to jump on board.

- **Route 3** – Travels from town through The Wood and out as far as Tresillian Ave in Atawhai, including a Dodson Valley loop.
- **Route 4** – This takes you from the Bridge Street depot all the way up the Brook Valley, passing right by the NMIT campus on the way.
- **Route 5** – Takes you right through the Victory area and up to the hospital, taking in Toi Toi, Murphy, St Vincent and Vanguard Streets along the way. There is an off-peak loop that also takes in Kawai Street South three times a day.
- **Route 6** – This is an off-peak only route that travels up Washington Road and Princes Drive and then around the Tahunanui hills as far as Tosswill Road. It runs three times a day.

Remember all these routes are hail and ride and they all connect up with the services between Nelson and Richmond too. If you are connecting with another service, remember to ask the driver

for a transfer ticket so you don't have to buy a second ticket when you change buses.

Plus buses on all routes have bike racks on the front that can carry two bikes. It's a perfect solution for those who only want to cycle one way or avoid a ride in the rain or the dark.

Check out everything you need to know about NBus, including how to download the app, at nbus.co.nz.



Be prepared in an emergency

In New Zealand, emergencies can happen anywhere, any time, and without warning.

Are you prepared for the power to be out for days?

Make sure you have torches and batteries you can easily find in the dark.

Have a solar powered radio so you can keep up with the latest news and alerts and know which stations to tune to – as your internet will be out.

Have a stock of food that doesn't need to be cooked (canned is good) or something to cook your food on that doesn't require power. Don't forget pets!

Make sure you have plenty of blankets and warm clothes on hand, as you'll be without heating.

Our top tip: Talk to your neighbours about what they'll do if the power is out. You might find they have a gas bbq and you have enough food to share.

happens.nz

WHAT'S ON... at a Council venue near you



Stoke Memorial Hall

ECO Conference:
Friday 25–Monday 28 August

Trafalgar Centre

Accelerate Conference 2017:
Friday 11 August, 7pm; Saturday 12 August, 10am–12pm & 1pm–3pm; Sunday 13 August, 10am–12pm & 1pm–3pm

Art Expo Nelson 2017: Friday 18–Sunday 20 August. Open every day from 10am

Shady dealings & daylight robberies – art thefts revealed:
Saturday 19 August, 7pm

Trafalgar Park

Tasman Makos v Canterbury:
Friday 18 August, 7.35pm

Broadgreen Historic House

Open 10.30am–4.30pm every day. Check out the interactive activities space – the Box Room.

Founders Heritage Park

Open 10am–4.30pm every day. Admission*: \$7 adults, under 12 free, \$15 family, \$5 concessions. *Locals free with ID

Nelson Public Libraries

Elma Turner Library

Family History Month: Monday 31 July–Thursday 31 August

Adult computer classes: Every Thursday, 9.30–11am, until September 28

JPs in the library: Every Saturday, 10am–12pm

Mosaic World Choir as part of the Live Music series: Sunday 3 September, 2pm

ESOL Community Chat: Every Thursday, 1pm–2pm

Library knitters: Every Thursday from 10am onwards

STEMWriters – a local writers group: Second Tuesday of each month, 2pm

BookChat: Second Tuesday of each month, 10.30am

Stoke Library

BookChat: Third Wednesday of each month, 5.30pm

Adult computer classes: Every Thursday (except 31 August), 8.15am–9.15am, until 21 September

Museums and Galleries

Nelson Provincial Museum

Open weekdays, 10–5pm; weekends and public holidays, 10–4.30pm

Da Vinci Robots & Machines: Until 13 August

The Suter Art Gallery & Theatre

Behold: 9.30am–4.30pm. Until 3 September

Refinery ArtSpace

Open weekdays 10am–5pm, Saturdays 11am–2pm

Nelson Camera Club – Selected work by members including photographic art, photojournalism, natural history, still life and landscape: 7–26 August

Donna-Marie Patterson (Christchurch) 'Inner Reflections', Multi Media Installation: 7–26 August

Jun Xie (Jewellery, Auckland based) and Caitlin Clarke (Installation, Christchurch based): 28 August–16 September

NMIT – Creative Industries, Staff [tutors] Group Show: 28 August–16 September

CHECK OUT...

Art Expo Nelson, Trafalgar Centre, Friday 18–Sunday 20 August, from 10am daily

Art Expo Nelson 2017 is a three-day show promoting artworks from more than 100 Nelson/Tasman and New Zealand artists at the Trafalgar Centre from 18–20 August. Enjoy the rare opportunity to choose from over 1500 artworks in one location. Unique and affordable art from the best of the country's painters, ceramists, sculptors, jewellers, glassworkers, photographers and multi-media talent.