

OUR NELSON

Issue 25 • 12 July 2017

Keep up to date with the latest news from Nelson City Council

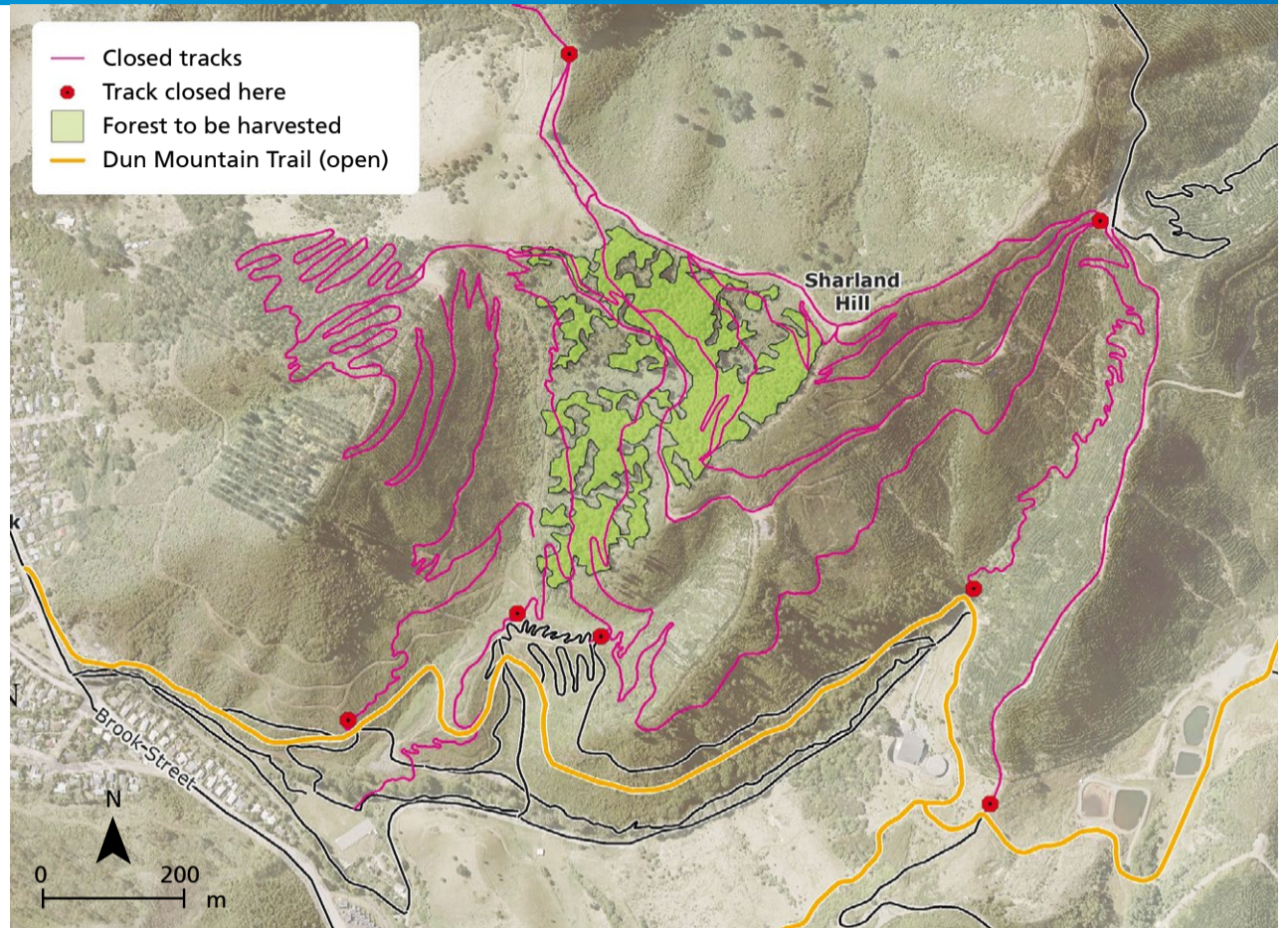
Sunday Live Music Series concert at Elma Turner Library

Sunday 6 August 2–2.30pm

Ruby Ba Than is a local singer, songwriter and artist. A powerful performer, she possesses the beguiling ability to speak to the soul with her bluesy expressive voice and poise. She has a quietly thrilling approach to contemporary songs, stripping them bare down to sparse guitar and vocals to reveal depth and insight into the uncertain world of love, loss and life.

itson.co.nz Search = Ruby

The schedule of Development and Financial Contributions, updated for inflation for 2017/18, are available on Council's website. These updated contributions will apply from 1 July 2017.



Logging work to start in the Brook

A number of mountain bike tracks are to be closed as logging work begins in the Brook.

A section of Douglas Fir trees are to be harvested just north of the Codger's Tracks area, with work commencing on 17 July.

The trees need to be removed in order to minimise the impact of wilding pines, and any further delay would have a detrimental impact on the environment.

A number of alternative options were investigated but the safest and only viable option for this block, to fulfil Council's resolution to get rid of Douglas Fir and Acacia, is to harvest.

The work is being carried out by PF Olsen now to ensure the tracks will be ready and available for use during the busy summer season.

Another reason for the immediacy of the work is because there is likely to be a shortage of logging crews in the coming months.

Nelson City Council has been working closely with the Nelson Mountain Bike Club committee to determine the best solution and timing for this project, and appreciates their input and support.

Council has pledged to reinstate any affected tracks after all the logging work is complete.

The logging work itself is expected to take six weeks, so it is hoped the reinstatement will be finished by October, although this is dependent on

how much work is required.

Nelson Mountain Bike Club's spokesman, Paul Jennings, says "Whilst this work is of course not ideal, we appreciate the amount of thought and effort that Council has put in to ensuring the impact on our members is minimised.

"We very much hope, by doing the work now, all our tracks will be open and ready in time for the summer."

Chair of the Works and Infrastructure Committee, Councillor Stuart Walker, says "Council really appreciates the public's help and co-operation and we hope to have the work completed as quickly as possible.

"We have worked very hard to find the best way forward to suit everyone, and I'd like to thank the Nelson Mountain Bike Club for their input and advice." Harvesting could affect some popular recreational tracks, either with temporary closures or detours being put in place.

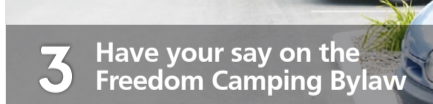
Logging trucks will follow two routes from the Maitai down to Nile Street – one along Collingwood Street and then Halifax Street; the other will follow Tory Street, Hardy Street and Milton Street.

No trucks will operate between 10pm and 6am but local residents and road users are being advised to take extra care.

Track users can keep an eye on the Council website or Facebook page for more information.



2 Community planting day



3 Have your say on the Freedom Camping Bylaw



4 Requests for Proposal – State Advances Building

nelson.govt.nz facebook.com/nelsoncitycouncil

Help the Nelson Library celebrate Family History Month in August

- Enrol in a *Starting Genealogy* class.
 - Learn about the role of art passing on family traditions and whakapapa.
 - Ponder on the craft on display.
 - Leave your grandchildren a few stories to read! Explore different ways of accessing and writing down your memories in this talk/workshop.
 - Where did you come from? Stick a dot on our world map, and tell us an interesting fact about your family to share on Facebook
- Talk to a genealogist.
 - Join an *Ancestry and more* class.
 - Walk the Fairfield cemetery.
 - Hear the history of Isel House and the Marsden family and visit the Isel Research Facility.
 - Look out for details in the libraries from July 12.
 - Contact the libraries by phone 03 546 8100 or email library@ncc.govt.nz.

nelsonpubliclibraries.co.nz



Community Investment Funding round open

The Nelson City Council Community Investment Fund is open for grant applications for projects and activities under \$2,500.

The Community Investment Fund has supported activities and projects across Nelson which help to make our city an even better place.

Broadly, the Fund contributes to activities focused on wellbeing, youth, children and families, older adults, diversity and aspects of learning and development that strengthen our communities making our city more resilient.

These projects are often run and funded in partnership with other funders and agencies.

Chair of Community Services

Committee, Councillor Gaile Noonan, says she's looking forward to seeing what projects come out of the process.

"The Community Investment Fund plays an important role in contributing to the activities and projects that make our city such a great place to be for all."

This funding round for activities and projects under \$2,500, closes on 18 August; further information is available on our website.

nelson.govt.nz

Better facilities planned for recreation in the Brook Valley

Council's Sport and Recreation Committee has approved, subject to the resource consent process, a site at Andrews Farm, for the development of more recreation facilities in the Brook Valley area.

The plan is to develop approximately 30 carparks and a toilet and wash down facility for bikes on the site.

Sport and Recreation Committee Deputy Chair Mike Rutledge says, "We have been aware of growing concern from local residents about parking and increased traffic as the area has become so popular with walkers, runners and mountain bikers. We've been looking at ways to relieve that pressure and make it safer for everyone."

An ex-logging skid site, accessible from Tantragee Road, had also been considered for some development. However, there were concerns about vehicle access on the narrow gravel road and the potential costs involved.

The Committee opted to focus resources on seeing what could be achieved at the Andrews Farm site at this time.

Councillor Rutledge says, "These facilities will improve this popular active recreation area for all the locals who use it. It will also make for a better experience for those who visit our city especially to do the Dun Mountain Trail, one of New Zealand's Great Rides."



Community planting day

Orphanage Stream Delta, Saturday 15 July, 10am.

If you would like to help restore a coastal habitat in Nelson, join this community planting day, which is being organised by Forest & Bird, with the support of Nelson Nature.

The planting will take place at the Orphanage Stream Delta, at the mouth of Orphanage Stream. Volunteers will be met on the pathway at the back of Bunnings on Saxton Road and then walk along to the planting site. Please bring a spade if you can and make sure to wear solid footwear and gloves. Contact Julie for information on 03 545 0989. If wet, the planting day will be postponed till Saturday 22 July, 10am.



Reducing waste at Matariki Parade

The Victory Community Centre's Matariki Lantern Parade is getting bigger and better each year but clever use of resources means the waste associated with this kind of event isn't.

This year over 1000 people attended the Matariki Lantern Parade, which included kai for everyone who took part.

With a great crew of volunteers lots of the dishes were able to be washed, but funding from Nelson City Council also allowed for the purchase of 1000 potato pak plates and forks for the hangi.

The volunteers separated waste; with food waste and compostable material going into the school compost bins, or taken home for volunteer's chickens. Cardboard was either re-used or recycled. Ka pai Victory Community Centre for a great job in cutting down waste or avoiding it all together.





Have your say on the Nelson City Freedom Camping Bylaw

Please get your submissions in on the draft Nelson City Freedom Camping Bylaw by this Friday 14 July 2017.

The proposed Bylaw will give Council powers to regulate and manage freedom camping activities on Nelson City local authority lands and introduces an infringement regime for offences.

It identifies sites which are prohibited or restricted for tenting, self-contained and non-self-contained vehicles with conditions, defines the hours of overnighting, and the number of consecutive days that freedom camping vehicles can stay at any one location in the City.

For further information about the proposed Bylaw and how to make a submission visit the website and search on "Freedom Camping Bylaw", call into any Nelson public library or the Council office at 110 Trafalgar Street.

Don't miss the deadline this Friday.



Nelson Youth Council wants your help to design a skatepark

The Nelson Youth Council will soon be running a competition for under 24's to let their inner designer out.

The skatepark at Trafalgar Centre is set for a change and some lucky young designer is going to get their work displayed right in the heart of Nelson. This competition will open in the coming weeks and is open to all under the age of 24. We look forward to seeing your contribution to making our town a better, brighter and more beautiful place. For more information or to contact Youth Council please go to the Nelson Youth Council Facebook page.

Driveway changes to improve footpaths

Council has changed the way vehicle entrances are constructed.

Previously, vehicle entrances across a footpath were designed to allow easy access for vehicles. However feedback from Nelsonians highlighted the need to take a wider range of users into account.

Now, when existing footpaths are renewed, or new footpaths are constructed, the profile of the

footpath is left a lot flatter. This means that there isn't such a dip in the footpath when walking over a vehicle entrance, making it easier for pedestrians, in particular those with mobility scooters, walking frames and pushchairs/prams.

However this does mean that low vehicles could "belly out" if entering driveways too quickly. To prevent this from occurring drivers should reduce their speed when entering driveways and try entering on a slightly different angle.

New manager for community housing

Council has announced the new contract manager for its Community Housing will be the Nelson Tasman Housing Trust.

Last year, Council re-tendered the contract after the current management contract expired.

This tender process included a greater emphasis on tenancy support which Chair of Council's Community Services Committee, Councillor Gaile Noonan, says the Trust is well placed to offer.

"The Trust has a strong community focus. It currently owns and manages 44 properties as well as coordinating emergency housing and providing housing advice and has shown a great partnership

approach to addressing our housing issues in Nelson – working closely with government agencies along the way."

The transition process will begin by October, with the Trust taking full responsibility by 1 November.

As part of this process, there is no change to any tenancy agreement. Rents will remain the same, as will the way that rent is charged.

Trust Director Carrie Mozena says, "We look forward to meeting and serving Council's Community Housing tenants over the coming months."

Tahunanui Cycleway project coming back to Council

At the recent Works and Infrastructure Committee meeting, a notice of motion was brought asking the Committee to revisit the proposal for the Tahunanui Cycleway.

The recommendation for the preferred cycleway option was lost at the May 18 committee meeting.

After hearing from the community in the public forum and much discussion around the table, the Committee has decided to not pursue the previous recommended route at this time. The matter will now be referred back to Council.

A report will be presented at an upcoming Council meeting that will outline options for moving the project forward in partnership with the community to see if a more desirable route can be achieved.



Nelson School of Music upgrade going well

The earthquake strengthening and upgrade of the Nelson School of Music is continuing to make good progress.

The most exciting developments are happening around the main auditorium where strengthening works are now progressing well after some initial challenges.

You will see a big tent over part of the building. Roof tiles are being removed to finalize the strengthening works but work is also starting on reshaping the roof and gables to their original design.

This work is a recent addition to the project after the School of Music gained additional funding

to reinstate the heritage gables and elevations to the north – east – south sides of the auditorium. Since then, a lot of planning has gone into undoing most of the 1970's modifications and bringing the building back to its original grandeur.

Specialist contractors from Mosgiel are manufacturing elements to match the original features as closely as possible, using historical photos and descriptions. These sections will be installed over the next few months.

Work is also going well on the new Recital Hall; Kidson House has a new roof; and a concrete floor in the Foyer area has been poured.

The School's famous organ is being refurbished in Timaru and it will be reinstated either later this year or in early 2018.



Anzac Park cycle path progress

Construction has been progressing well on the project to improve cycle access to the existing path within Anzac Park and to install a pedestrian refuge on Rutherford Street.

The path has been upgraded and redirected to link with the new pedestrian refuge on Rutherford Street, due for installation this week.

This work aims to improve the connection between the centre of town and the St Vincent Street cycle way.



Keep vehicles off our parks

Over the winter months, it even easier than usual for vehicles to do damage to grassy areas in Council reserves.

If you see vehicles deliberately doing damage to reserves (driving fast, spinning wheels, etc) you should report it to police in the first instance, rather than Council, as they will have a better chance of

catching the vandals and preventing more damage.

As well as damage to the reserve, there is a real safety risk with vehicles driving where they shouldn't be, both to members of the public and to the drivers themselves.

Also at this time of year, even just driving on to the grass to park closer to your favourite skate park or playground can cause damage so please bear that in mind and park sensibly and considerately.

Requests for Proposal – State Advances Building

Nelson City Council invites proposals from interested parties to purchase or lease the Civic House State Advances building.

The purpose of this Request for Proposal (RFP) is the selection of a party with whom Council may negotiate an agreement for sale or lease of the Civic House State Advances building at 110 Trafalgar Street.

Any interested in responding the RFP should apply online at the Government Electronic Tenders System (GETS): gets.govt.nz.

For help or more information please email peter.hunter@ncc.govt.nz.

Responses close at 3pm on 19 July 2017.



MEETINGS

For a full list of Council meetings go to:

nelson.govt.nz/meetings

WHAT'S ON...



at a Council venue near you?

For a full list of Nelson events go to:

itson.co.nz

To sign up for Our Nelson by email go to:



facebook.com/nelsoncitycouncil