

YOUR OFFICIAL GUIDE TO NELSON CITY

# NELSON CITY GUIDE



# Nelson Events

---

Nelson is known for its year round sunshine making it perfect for events. Whether its food and wine, performing or visual arts, sport, culture or heritage, it's all here...all year!

## Lantern Celebration

15 Dec 2012

Walk at sunset to the Centre of New Zealand then wander down the hill using your lantern to light the way.

## Trafalgar Street Countdown

31 Dec 2012

New Year celebrations at the top of Trafalgar Street.

## Nelson Jazz and Blues Festival

1 – 5 Jan 2013

Free and ticketed events in parks, bars and venues featuring jazz and blues bands.

## Adam Chamber Music Festival

31 Jan – 9 Feb 2013

International Chamber Music Festival held every two years in Nelson.

## Buskerburgoo

7 – 10 Feb 2013

Witness the wildest and weirdest acts of the busking kingdom.

## Trafalgar Street Market Day

9 Feb 2013

Nelson City businesses spill out into the streets for a fun filled day with bargains galore.

## Opera in the Park

16 Feb 2013

Nelson's signature summer event - picnic under the stars as top opera singers entertain and enthrall.

## Festival of Opportunities

23 – 24 Feb 2013

A wellness and lifestyle weekend exploring alternative health, wellbeing and spirituality.

## Robertsons Trolley Derby

16 March 2013

Gravity-powered trolleys compete in speed-based races down Collingwood St.

## MarchFest

6 April 2013

Nelson's hip harvest hop festival celebrating craft beers, slow food and eclectic music.

## Ceol An eas

31 May – 3 June 2013

Traditional Irish Music Festival attracting musicians and music lovers.

## Founders Book Fair

1 – 9 June 2013

Thousands of pre-loved books, DVDs, records and puzzles.

## Nelson Winter Music Festival

July 2013

Dozens of music events over a two week period including jazz, classical, and cabaret.

## Art Expo Nelson

July 2013

Browse and purchase art, sculpture and photography from over 100 South Island artists.

## South Island Masters Games

5 – 13 October 2013

Biennial gathering of athletes competing in over 50 different sports.

## Nelson Arts Festival

11 – 28 Oct 2013

Theatre, dance, cabaret, music and comedy from national and international performers, plus masked parade.

## Nelson Golf Festival

21 – 25 October 2013

Golf tournament played on three different golf courses over four days.

## Weekly

The Nelson Market. Every Saturday 8am – 1pm Montgomery Square. A bustling, vibrant Nelson icon featuring a colourful array of arts & crafts, gifts, fashion, jewellery, fresh & organic produce.

Monty's Sunday Market, Montgomery Square 8am – 1pm Recycled treasures, imported goods & fresh produce.

Nelson Farmers Market. Every Wednesday at Fashion Island. Variety of stalls with fresh, local and seasonal produce and food stalls.

To find out more  
about events in  
Nelson visit  
[www.itson.co.nz](http://www.itson.co.nz)





# Contents

---

Events.....	2	Restaurants, Cafés & Bars.....	20
Getting Around.....	4	City Map.....	24
Nelson City Top Attractions .....	6	City Map Legend.....	25
Nelson's Arts & Galleries .....	8	Nelson Map.....	26
Shopping .....	10	Radio in Nelson.....	25–27
Health & Beauty .....	14	Contact Uniquely Nelson.....	28
Fashion, Footwear & Accessories .....	16		

---

## Nelson City Promotions

Uniquely Nelson markets and promotes Nelson City with various events and promotions each year. These include:

February 9	Trafalgar Street Market Day
Winter	Shop Nelson City & Win
Winter	Free Parking Tuesdays
September	Spring Fashion Fortnight
October	Art in Windows
December	Christmas promotions

For more information visit

[www.uniquelynelson.co.nz](http://www.uniquelynelson.co.nz)

## Welcome to Nelson City!

No visit to Nelson City is complete without a walk to the top of the Cathedral steps to enjoy a spectacular view of the entire CBD with the bay stretching beyond. At street level, Nelson City is equally striking, with many heritage buildings, tree-lined streets, outdoor cafés and the gorgeous hanging flower baskets in summer. Take time to enjoy boutique shopping, designer fashions, amazing arts and crafts, great cafés and restaurants and the world-famous Markets. The Official Nelson City Guide is your definitive guide to Nelson City and is complemented by the Official Nelson Tasman Visitor Guide.

## Climate

Nelson regularly tops the country with the highest sunshine hours in New Zealand. We enjoy warm summer days (average 24°C or 71°F) and cool but sunny winter days (average 13°C or 55°F). Winter nights are cold and frosty.

## Historical Facts

- Inhabited since 850AD by Maori who settled in the area for its fishing, kumara growing and argillite for making tools.
- In 1842 Nelson was established as a New Zealand Company organised settlement for English immigrants. It was made the second City in New Zealand by Queen Victoria in 1858.
- Nelson is named after Admiral Lord Horatio Nelson with streets named after his ships, officers and famous battles.

## Emergency Services

### Police, Fire and Ambulance

111 (Emergency)

### Nelson Hospital/Emergency Dentist

T: 03 546 1800

### Urgent Chemist - Prices Pharmacy

T: 03 548 3897.

### Nelson After Hours and Duty Doctor

T: 03 546 8881

# Getting Around

## Nelson Airport

Nelson Airport averages 90 domestic aircraft movements every day with 1.2 million people using the Nelson Airport terminal every year.

Airport Super Shuttle.

Freephone 0800 SHUTTLE.

[www.supershuttle.co.nz](http://www.supershuttle.co.nz)

Email: [reservations@supershuttle.co.nz](mailto:reservations@supershuttle.co.nz)

## Buses

The NBus services covers most Nelson suburbs and regular connections between Nelson and Richmond. Pick up an NBus timetable from the depot at 27 Bridge Street, the i-Site Visitor Centre or Nelson City Council, 110 Trafalgar Street.

## Taxis

Nelson City Taxis, T: 03 548 8225.

Nelson Bays Cabs, T: 03 541 8294.

Sun City Taxis, T: 03 548 2666.

## Abel Tasman Sea Shuttle

In summer the Abel Tasman Sea Shuttle leaves Nelson 8am daily direct to Abel Tasman National Park. From 1 April – 30 Nov. the shuttle departs from Kaiteriteri to the Park. More info: [www.abeltasmanseashuttles.co.nz](http://www.abeltasmanseashuttles.co.nz)

## Nelson City Parking

Nelson City has several car parks & plenty of on-street parking. On-street parking is generally a 1 hour time limit and car parks generally 3 hours (Wakatu Square is all-day parking). Parking fees are \$1 per hour with free parking after 1pm on Saturday and all day Sunday.

## Cycling

Bikes can be hired from:

a2b Electric Bicycle Rental –  
[www.a2b-ecycle.co.nz](http://www.a2b-ecycle.co.nz)

Nelson Bike Hire/Stewarts Cycle City –  
[www.nelsonbikehire.co.nz](http://www.nelsonbikehire.co.nz)

Biking maps and information available on-line from: [www.nelsoncitycouncil.co.nz/bike-nelson-cycling-maps](http://www.nelsoncitycouncil.co.nz/bike-nelson-cycling-maps)

## Sightseeing on Wheels

Go sightseeing around Nelson City, Founders Park, Tahuna Beach or Monaco with Segways! See Move Nelson advert on Page 5 for more details. [www.movenelson.co.nz](http://www.movenelson.co.nz)

## Walks

Nelson is a walkers paradise! Visit Nelson City Council for booklets and maps of walking trails and shared bike/walk pathways.

### NBUS

01

NBus runs regularly between Nelson and Richmond with buses every 15 minutes at peak times. There are also up to 15 buses a day going to Atawhai, The Brook, Victory and Washington Valley. Plus there's the Late Late Bus option to get home on weekends. Jump on an NBus today.

Depot. 27 Bridge Street

T. 03 548 1539

[www.nbus.co.nz](http://www.nbus.co.nz)



## ABEL TASMAN SEA SHUTTLE

02

Summer daily departures from Wakefield Quay to the Abel Tasman. Designed for comfort and safety, experience the only scheduled ferry crossing from Nelson to the Abel Tasman. With onboard toilets, café and no steps or stairs this is the best way to see Nelson's magnificent scenery.

Wakefield Quay and Kaiteriteri Beach

T. 0800 732 748

E. [cruise@abeltasmanseashuttles.co.nz](mailto:cruise@abeltasmanseashuttles.co.nz)

[www.abeltasmanseashuttles.co.nz](http://www.abeltasmanseashuttles.co.nz)



## NELSON BIKE HIRE/STEWARTS CYCLE CITY

03

Explore Nelson by bicycle. Choose a quality bicycle to check out the local scenery or go on a cycle tour. Full workshop facilities, huge range of bikes, parts and apparel. Hire from \$30 per half day.

Hours: Mon - Fri 8.30am – 5.30pm

Sat 9am – 4pm

Sun 10am – 3pm (Summer only)

114 Hardy Street, Nelson

T. 03 548 1666

E. [info@stewartscyclecity.co.nz](mailto:info@stewartscyclecity.co.nz)

[www.nelsonbikere.com](http://www.nelsonbikere.com)

[facebook.com/stewartscyclecity](https://facebook.com/stewartscyclecity)



## NELSON CITY TAXIS

04

Nelson City Blue Bubble Taxis have Nelson's largest fleet of sedans and vans to move you around the region in comfort. Contact us for all your airport transfers, wheelchair and forward bookings. Baby car seat and luggage trailer available on request. Always look for the Blue Bubble!

**All major credit cards accepted, Eftpos, Taxicharge card facilities in all vehicles.**

Hours: 24 hours/7 days

T. Freephone 0800 10 88 55

T. 03 548 8225

E. [enquiries@nelsontaxi.co.nz](mailto:enquiries@nelsontaxi.co.nz)

Book online at [www.nelsontaxi.co.nz](http://www.nelsontaxi.co.nz)



## MOVE NELSON (ABOUT N OUT LTD)

05

Segways are a wheely fun & unique way to see Nelson's attractions – Maitai River, parks, gardens, heritage houses, Founders Park, Tahuna Beach & Monaco. Great personal guided tours. Easy to use! 4 locations to start at: Nelson Information Centre, Founders Park, Tahuna Beach & Monaco (Honest Lawyer).

Hours: 7 days 9am to dusk year round

T. 0800 fun seg (386 734)

M. 027 243 5301

[www.movenelson.co.nz](http://www.movenelson.co.nz)

[facebook.com/movenelson](https://facebook.com/movenelson)





# Nelson City

## Top Attractions

---

### The Nelson Markets

Nelson City is fortunate to be home to three fantastic weekly Markets. The world-famous Nelson Market, Montgomery carpark, is a must-go for any visitor and a popular meeting spot for locals. Every Saturday 8am – 1pm, the Market is a treasure trove of gifts, jewellery, arts, crafts, local fashion, fresh, seasonal & organic produce.

Monty's Market 8am – 1pm every Sunday, Montgomery carpark. A mecca for pre-loved, recycled and vintage, clothes, books, CDs, tools, collectables, fresh produce, new & imported goods.

The Nelson Farmers Market is every Wednesday from 11am – 4pm. In the courtyard of Fashion Island, it's the perfect place to enjoy fresh home-grown produce and gourmet foods.

### Nelson Cathedral & Church Hill

From Church Hill and the Cathedral steps, the Christ Church Cathedral offers a spectacular view over the City. Built mainly of Takaka marble, the Cathedral is set in a garden with many outstanding trees. The Cathedral is open to visitors, and interpretation panels tell more of the history.

### Nelson Provincial Museum

The Nelson Provincial Museum is at the corner of Trafalgar & Bridge Streets, the same site as the original museum in 1842. The museum provides an insight into the natural and human history of Nelson. There are two main gallery spaces featuring permanent and temporary exhibitions, a classroom, museum shop and rooftop garden.

### Nelson School of Music

The Nelson School of Music in Nile Street celebrated its centenary in 1994. A fine heritage building renowned for its acoustics, it is a community-based performing arts and music education centre. Every year the NSOM contributes over 150 concerts to Nelson's cultural scene and hosts an annual Winter Music Festival and the Adam Chamber Music Festival in February.

### The Theatre Royal

The Theatre Royal was built in 1878 and remains the oldest wooden theatre still in use in the Southern Hemisphere. By the 1930s, the building was run-down, but was bought by Nelson Repertory in 1944. The Theatre was forced to close in 2005 for a major refurbishment and re-opened on 31 May 2010, offering a fully restored heritage auditorium alongside 21st century staging and front of house facilities. The Theatre Royal offers a comprehensive program of theatre, dance, music and special events.

### Queens Gardens

The Queens Gardens was founded to commemorate the 50th jubilee of Queen Victoria's coronation. Architect AFT Somerville designed the garden in 1887 which was formally opened in 1891. The gardens have extensive Māori colonial and Victorian history and are an outstanding example of a Victorian ornamental public garden.

Paths meander through groves of tall trees, many of them outstanding heritage specimens. Formal plantings and romantic woodland edge the serpentine Eel Pond. Entry from either Bridge or Hardy Streets.

**For more information visit [www.nelsoncitycouncil.co.nz/About-Nelson](http://www.nelsoncitycouncil.co.nz/About-Nelson)**

## NELSON FARMERS MARKET

06

A taste of what Nelson has to offer. Nelson's only European-style market situated in the heart of Nelson City. Browse the many stalls for locally grown fruit, vegetables, nuts, eggs, honey, plants and flowers. Talk to the local producers about their baked goods, oils, cheeses, smoked fish and salamis and nutritious multicultural gourmet foods. ORGANIC – FREE RANGE – SPRAY FREE – SUSTAINABLE – QUALITY NZ PRODUCTS.

**Hours:** Wednesdays only from 11am – 4pm  
Fashion Island

Corner Hardy & Morrison Streets, Nelson  
E. [info@nelsonfarmersmarket.org.nz](mailto:info@nelsonfarmersmarket.org.nz)  
[www.marketground.co.nz/fmznelson](http://www.marketground.co.nz/fmznelson)



## NELSON I-SITE

07

Whether you're visiting from around the world or down the road - start with the local travel experts at Nelson i-SITE. We can help you with:

- Local information and bookings including transport, accommodation, events, activities, restaurants and more!
- Itinerary planning, free maps and visitor guides

**Hours:** Mon - Fri 8.30am – 5pm  
Sat & Sun 9am – 4pm

Millers Acre Centre, 75 Trafalgar Street, Nelson  
T. 03 548 2304 F. 03 546 7393  
E. [NelsonCity@NelsonNZ.com](mailto:NelsonCity@NelsonNZ.com)  
[www.NelsonNZ.com](http://www.NelsonNZ.com)



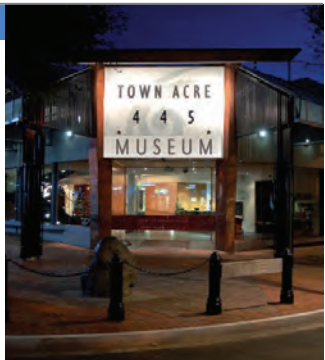
## NELSON PROVINCIAL MUSEUM

08

The Nelson Provincial Museum holds a diverse range of natural and social history objects related to the Nelson-Tasman region. A variety of permanent and changing exhibitions create a stimulating and enjoyable experience for visitors. The collections are well used by local researchers.

**Hours:** Daily from 10am • Admission charges apply  
Cnr Hardy & Trafalgar Streets, Nelson

T. 03 548 9588 (General information)  
T. 03 548 9740 (Research enquiries)  
E. [enquiries@museumnp.org.nz](mailto:enquiries@museumnp.org.nz)  
[www.nelsonmuseum.co.nz](http://www.nelsonmuseum.co.nz)



## THE NELSON MARKET - EVERY SATURDAY

09

This bustling Nelson icon transforms Montgomery Square into a vibrant showcase of regional arts, crafts, fashion, jewellery, fresh local, seasonal and organic produce. Catch up with friends and family over coffee, brunch or lunch and savour the best of Nelson.

Monty's Market – Every Sunday.  
Recycled treasures, imported new & local goods.

**Hours:** Sat & Sun 8am to 1pm  
Montgomery Square, Nelson City  
T. 03 546 6454  
E. [info@nelsonmarket.co.nz](mailto:info@nelsonmarket.co.nz)  
[www.nelsonmarket.co.nz](http://www.nelsonmarket.co.nz)



# Nelson's Arts & Galleries

## Jens Hansen Jewellers

Jens Hansen Gold & Silversmith is literally a Nelson jewel! The workshop has been producing handmade, original and precious jewellery for decades, including the world's most famous ring, 'The One Ring', created for The Lord of the Rings trilogy and The Hobbit movies.

## Flame Daisy Glass Blowing Studio

Flame Daisy is a boutique glassblowing studio right in the heart of the City. Watch the magic of glassblowing or try it yourself at one of Flamedaisy's workshops. Exquisite one-off glass art is also available to buy.

## The Bishop Suter Memorial Art Gallery

Bishop Suter Memorial Art Gallery - Te Aratoi o Whakatū is the public arts gallery of the Nelson Tasman region. It is also an arts complex that includes a theatre, café and store. The Suter was founded as a memorial to Andrew Burn Suter, Bishop of Nelson from 1866 to 1891. It opened on 31 May 1899 and has always been an important part of the region's artistic life with a dynamic range of exhibitions and education programmes. The Suter, 208 Bridge St, Tel: 03 548 4699.

## Nelson Arts Festival

The Nelson Arts Festival 2012 is held over 17 days every October and showcases artists from afar, alongside some of our favourite New Zealand performers. A packed program of ticketed and free events offers everything from music, dance, performance, comedy, literary forums and films. The Arts Festival also stages the Masked Parade, a great showcase for the creativity of community and school groups.

## South Street Heritage & Arts Precinct

The historic precinct of South Street demonstrates Nelson's architecture from the period of the mid 1800s. The first owner of South Street, then known as Town Acre 456, was the Honourable Constantine Augustus Dillon who bought the land from the NZ Company in 1851. The first cottage was built in 1863 with further building following during 1864-66.

The entire street is heritage-protected and most cottages remain as private residences, with the South Street Gallery occupying the cottage at the corner of South & Nile Streets.

## Galleries & Artists

Nelson City is home to many artists studios and galleries. Regular exhibitions of local, national and international artists can be found around the City. Nelson City Galleries and artists studios include:

- Art @ 203, 203 Trafalgar St, T: 548 3961
- Art on Alma, Cnr Bridge/Alma Sts
- Fibre Spectrum, 280 Trafalgar St, T: 548 1939
- Jewel Beetle, 240 Trafalgar St, T: 548 0487
- Lustre Gallery, 36 Collingwood St, T: 545 8922
- Mike Ward, 2/244 Hardy St, T: 548 7838
- Mockingbird Studio, 6 Nile St West
- Momentum Gallery, 10 Church St, T: 548 0082
- Morrison St Café, 244 Hardy St, T: 548 8110
- Red Art Gallery, 1 Bridge St, T: 548 2170
- Refinery Artspace, 3 Halifax St, T: 548 1721
- Rutherford Gallery, 42 Halifax St, T: 548 1878
- South St Gallery, 10 Nile St West, T: 548 8117

Full details of artists, exhibitions and galleries can be found by visiting the Arts Council Nelson website:  
<http://www.acn.org.nz/exhibitionsevent>



## FLAMEDAISY GLASS DESIGN

10

Flamedaisy is the boutique glassblowing studio and gallery of Anthony Genet & Berinthia Binnie. Watch the magic of glassblowing or try it yourself (when available). From affordable to extravagant! We post worldwide.

**Hours:** Mon - Fri 10am – 5pm • Sat 10am – 1pm  
Sun 10am – 1pm (Summer Only)

### Studio & Gallery

324 Trafalgar Square West, Nelson

T. 03 548 4475

E. [flamedaisy@clear.net.nz](mailto:flamedaisy@clear.net.nz)

[www.flamedaisy.com](http://www.flamedaisy.com)



## JENS HANSEN - GOLD & SILVERSMITH

11

Jens Hansen has been making jewellery of uncompromising beauty for decades. All the pieces are handmade, original, precious and crafted to be worn, including the world's most famous ring, The One Ring, created for The Lord of the Rings trilogy and The Hobbit movies.

**Hours:** Mon - Fri 9am – 5pm  
Sat 9am – 2pm • Summer - Sun 10am – 1pm

Corner Selwyn Place & Church Street

320 Trafalgar Square, Nelson

T. 03 548 0640

E. [info@jenshansen.com](mailto:info@jenshansen.com)

[www.jenshansen.com](http://www.jenshansen.com)



## RUTHERFORD GALLERY

12

The Rutherford Gallery is Nelson's oldest and largest dealer gallery. Some of New Zealand's best known artists are represented here. Our speciality is works celebrating the New Zealand landscape.

**Hours:** Daily 8.30am – 5.30pm  
Sat 10am – 12.30pm

42a Halifax Street, Nelson

T. 03 548 1878

After Hours: Sue T. 03 546 7752 M. 021 151 3968

E. [suetaylor@rutherfordgallery.co.nz](mailto:suetaylor@rutherfordgallery.co.nz)

[www.rutherfordgallery.co.nz](http://www.rutherfordgallery.co.nz)



Rutherford Gallery

## THE SUTER ART GALLERY

13

The Suter Te Aratoi o Whakatū is Nelson's public art gallery featuring changing exhibitions.

Browse The Suter Store for local arts and crafts, relax in The Suter Café overlooking the tranquil Queens Gardens, enjoy a film or show at The Suter Theatre. From local to international, there is something for all ages and interests.

**Hours:** Daily 10.30am – 4.30pm  
(Except Good Friday, Christmas Day and New Year's Day)

208 Bridge Street, Nelson

T. 03 548 4699

E. [info@thesuter.org.nz](mailto:info@thesuter.org.nz)

[www.thesuter.org.nz](http://www.thesuter.org.nz)





# Shopping

---

Nelson City's vibrant retail scene is alive with alluring labels, products and shopping experiences! There's the vintage and one-off finds in the eclectic recycle shops, the locally-made gourmet foods, the boho and artisan textiles, wools and handicrafts, and a mecca of fashionable boutiques, designers and high-street fashion stores.

If you're visiting Nelson to enjoy the great outdoors then you can rest assured you'll be able to find all your adventure and outdoors gear, plus sporting equipment, bikes and cycling accessories and hunting & fishing equipment.

For that unique gift to take home, visit one of Nelson City's many Kiwi giftware and souvenir shops, art & craft galleries and bookstores.

There's everything you'll need as a visitor to Nelson, with a full range of photographic services, banks, internet cafés, supermarkets, travel booking agencies and tour guides.

The City is a compact grid with easy parking and walking. Take time out to sit in the sun on the Church Steps or at Queens Gardens, or linger at a side-walk café and watch the world go by. Enjoy!

## City Retail Trading Hours:

Generally most retail stores are open from:

Monday – Friday: 9am – 5.30pm

Saturday & Sunday: 10am – 2pm

Please check with individual stores for their trading hours. Restaurants, cafés & bars also offer extended trading hours.

## Banks

Banks are generally open 9.30am – 4.30pm, Monday to Friday and several 24 hour ATMs are located around the City. Foreign exchange is available at most banks.

## Currency

The basic unit of currency in NZ is the dollar (100 cents = one dollar). Notes come in denominations of \$100, \$50, \$20, \$10 and \$5. Coins are \$2, \$1 (gold), 50c and 20c (silver) and 10c (bronze).

## GST

A Goods & Service Tax (GST) of 15% is applied to the cost of all goods and services in New Zealand, except for purchases at duty-free shops.

## Phone Services

When phoning Nelson or anywhere in the South Island, dial 03 first. National directory 018, International directory 0172.

## Post Office

NZ Post is located at 209 Hardy Street and is open Monday to Friday.

## Internet

Internet services can be found at Aurora Internet Café in Trafalgar Street or at the Elma Turner Library, 27 Halifax Street. Many cafés also offer free Wi-Fi.

## Public Toilets

Public toilets can be found throughout the City, and in the Buxton and Montgomery car parks. See the City Map on page 24 for the location of toilets and other visitor services.

## AROMAFLEX

14

Organic Essential and carrier oils imported locally and around the world. Refill your bottles, or buy drops, blends or mls. Aromatherapy and Reflexology treatments available on site. International training available for Aromatherapy and Reflexology available upstairs in the NZQA Private Training Establishment.

**Hours:** Mon - Fri 9am – 5.30pm  
Saturday 10am – 3pm

280 Trafalgar Street, Nelson

T. 03 545 6217

E. [info@aromaflex.co.nz](mailto:info@aromaflex.co.nz)

[www.aromaflex.co.nz](http://www.aromaflex.co.nz)



## BASECAMP

15

Basecamp is 100% Nelson owned. We take pride in stocking quality performance clothing, footwear, packs and accessories for travel and the outdoors. Buy leading NZ and international brands from an independent retailer.

- Earth Sea Sky
- Merrell
- Leki
- Icebreaker
- Teva
- Deuter

**Hours:** Mon - Fri 9am – 5.30pm • Sat 9.30am – 3.30pm  
Sun 10am – 2pm (Summer only)

295 Trafalgar Street, Nelson

T. 03 548 1710

E. [basecampnelson@ihug.co.nz](mailto:basecampnelson@ihug.co.nz)

[www.basecampnelson.co.nz](http://www.basecampnelson.co.nz)



## CREATIONS UNLIMITED

16

Nelson's locally owned craft shop for 20 years specialises in knitting, stitching, crochet, patchwork, quilting, teddy bear making and embroidery. Come and see us for a fabulous range of quality wools and the latest knitting patterns. Be inspired at Creations Unlimited.

**Hours:** Mon - Fri: 9am – 5.15pm  
Sat 9.30am – 12.45pm

118 Hardy Street, Nelson

T. 03 548 4297

E. [shop@creationsunlimited.co.nz](mailto:shop@creationsunlimited.co.nz)

[www.creationsunlimited.co.nz](http://www.creationsunlimited.co.nz)



## CRUELLAS NATURAL FIBRE BOUTIQUE

17

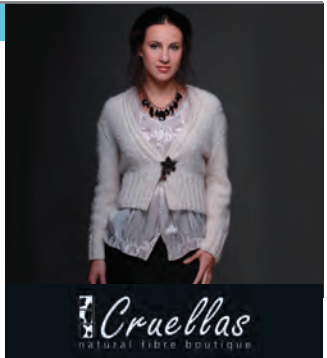
Signature store of The Rare Yarns Company. Experience Cruellas – try and buy or fit and knit. NZ Garments knit to order and we post overseas. Hand knits, Patterns, Throws, Blankets, Merino, Possum/Merino, Knitting yarns, Accessories, Cushions, Alpaca, Possum, Knitwear, Baby knits. 2011 Top Shop Supreme Winner 2012 Joint Top Shop Supreme Winner

**Hours:** Mon - Fri 9.30 – 5.30pm  
Sat 9.30 – 2pm

155 Hardy Street, Nelson

T. 03 548 4016 E. [shop@cruellas.co.nz](mailto:shop@cruellas.co.nz)

[www.cruellas.co.nz](http://www.cruellas.co.nz)



## IVY FLOWER ART

18

We can create for you beautiful bouquets, displays and arrangements to suit any occasion. Whether you are here for a conference, holiday, or you just want to say thank you, pop in and see us, and we will work our magic for you.

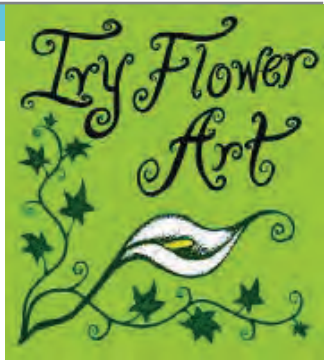
**Hours:** Mon - Fri 9am – 5.30pm  
Sat 9.30am – 2pm

Nelson Central Arcade, 219 Trafalgar Street, Nelson  
T. 035480531

Fax. 03 5480563

E. [ivyflowerart@clear.net.nz](mailto:ivyflowerart@clear.net.nz)

[www.ivyflowerart.co.nz](http://www.ivyflowerart.co.nz)



## LIVING LIGHT CANDLES

19

Living Light Candles is a shining light in the heart of the City. Quality, handcrafted, locally made candles created from natural ingredients including a selection of 100% soy candles. An experience of fragrance and beauty for you to enjoy.

**Hours:** Mon - Fri 9am – 5pm  
Sat 10am – 3pm

City Centre Arcade, off Trafalgar Street, Nelson  
T. 03 546 7561

E. [Jude@livinglight.co.nz](mailto:Jude@livinglight.co.nz)

[www.livinglight.co.nz](http://www.livinglight.co.nz)



## MAGNIFICENT NEW ZEALAND GIFTS

20

Excellent range of 100% NZ made gifts. We mail tax (GST) free worldwide. Possum/Merino knitwear, t-shirts, bushshirts, ceramic/soft native birds, books, greenstone, Kete, Pau jewellery, woodwork, ugg boots, moo boots, hats, kiwiana, mohair throws, seagulls, scuffs, slippers, lambskin gloves, golf club covers.

**Hours:** 7 days 9.30am – 5.30pm (Oct – Feb)  
Mon - Fri 10am – 5pm (Mar – Sept)  
Sat 10am – 3pm (Mar – Sept)

216 Hardy Street, Nelson

T. 03 546 6066

E. [sales@nzmadegifts.com](mailto:sales@nzmadegifts.com)

[www.nzmadegifts.com](http://www.nzmadegifts.com)



## NELSON CITY CAMERAS

21

Professional advice, helpful staff and welcoming store.

- Cameras
- Binoculars
- Camera bags
- Camera accessories
- Passport photos
- Memory cards
- Frames
- Albums
- Film processing
- Canvas prints
- Poster prints
- DVD transfers

**Hours:** Mon - Thu 8.30am – 5.30pm • Fri 8.30am – 6pm  
Sat 9am – 4pm • Sun 10am – 3pm

191 Trafalgar Street, Nelson

T. 03 548 9886

E. [nelsoncitycameras@xtra.co.nz](mailto:nelsoncitycameras@xtra.co.nz)



**Nelson City Cameras**

## NELSON HUNTING & FISHING NZ

22

Nelson Hunting & Fishing is a one stop shop for all your outdoor requirements. Located in the City centre we offer the most comprehensive selection of hunting, fishing and outdoor products. Our team have extensive knowledge of the outdoors and are here to help. This fantastic store is a must visit for all that visit Nelson.

**Hours:** Mon - Fri 8.30am - 5.30pm  
Sat 8.30am - 4pm • Sun 10am - 3pm

50 Achilles Ave, Nelson

T. 03 548 1840

E. [nelsonhuntfish@xtra.co.nz](mailto:nelsonhuntfish@xtra.co.nz)

[www.huntingandfishing.co.nz](http://www.huntingandfishing.co.nz)



NELSON  
**Hunting & Fishing**<sup>®</sup>  
NEW ZEALAND

## PAPER PLUS

23

Paper Plus is a comprehensive one stop shop for all your book and stationery needs located in Nelson's main shopping street. Whether you are an avid book lover, need to stock up on your office stationery or just want a postcard, our friendly, experienced staff can help.

**Hours:** Mon - Thu 8.30am - 5.30pm • Fri 8.30am - 6pm  
Sat 8.30am - 4pm • Sun 10am - 4pm

237 Trafalgar Street, Nelson

T. 03 546 8188

E. [nelson@paperplus.co.nz](mailto:nelson@paperplus.co.nz)

[www.paperplus.co.nz](http://www.paperplus.co.nz)



**paperplus**  
My books. My stationery. My store.

## PREGO MEDITERRANEAN FOODS

24

Prego Mediterranean Foods is THE destination for foodies and people who love cooking. Our shelves are overflowing with 1500+ different products: from Italian to Spanish Hams; from local wines and olive oils, to French cheeses. Browse through our many cook books, savour a coffee, and enjoy some great food. Prego!

**Hours:** Mon - Fri 9am - 5:30pm, Sat 9am - 2pm  
23 Halifax St Nelson (until May 2013) ...  
...from 1 June 2013, 90 Collingwood St!

T. 03 546 7964

E. [info@pregofoods.co.nz](mailto:info@pregofoods.co.nz)

[www.pregofoods.co.nz](http://www.pregofoods.co.nz) and Facebook



## SIMPLY NEW ZEALAND

25

A favourite place for locals and wonderful surprises for visitors. Nelson's most extensive selection of NZ and locally made gifts including many exclusive ranges. Free gift wrapping and postage tax free world wide.

**Hours:** Mon - Sat 9am - 5pm  
Sun 10am - 4pm

Millers Acre opposite i-site  
39 Halifax Street, Nelson

T. 03 545 7501

E. [nelson@simplynz.co.nz](mailto:nelson@simplynz.co.nz)

[www.simplynz.co.nz](http://www.simplynz.co.nz)



**SIMPLY**  
**NEW ZEALAND**  
The Great New Zealand Shop

# Health & Beauty

After a day of retail therapy it's time to take care of the body and the soul. Relax and unwind with one of Nelson City's health, beauty and wellbeing practitioners.

Whether it's a massage to soothe the stresses away, a new do for your hair or a complete makeover for your face, there's plenty of choice in Nelson City. Our beauty centres and spas pride themselves on using the best of local and international beauty products, with some unique offerings made right here in Nelson.

When it comes to your overall health, you'll find expert advice and specialised services to

help keep you well and prevent illness and disease. There's a huge range of alternative & complementary therapies available including reflexology, iridology, aromatherapy, naturopathy, homeopathy, Chinese traditional medicine and energy therapies. For your everyday wellbeing, there's a huge selection of vitamins, supplements, herbal remedies, sports nutrition and natural skincare products.

## CAROL PRIEST NATURAL COSMETICS 26

Gourmet food for the skin - freshly prepared in small batches. Made in Nelson, New Zealand.

- No mineral oils
- No synthetic fragrances
- No artificial colours
- No paraben preservatives

Hours: Mon - Fri 10am - 5pm

Sat 10am - 1pm

259 Hardy Street, Nelson

T. Freephone 0800 276 269

F. 03 548 1889

E. [cpnc@clear.net.nz](mailto:cpnc@clear.net.nz)

[www.carolpriest.co.nz](http://www.carolpriest.co.nz)



## NELSON BEAUTY THERAPY 27

### dermalogica

Nelson's leading Dermalogica Skin Centre of Excellence. Expert skin advice, well educated and experienced therapists. Facials, massage, waxing, manicure, pedicure and appearance medicine with Dr. Robert H Beulink MBChB (Otago), FACCs.

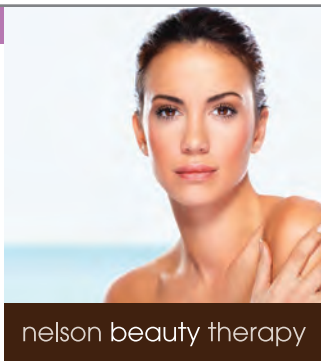
Hours: Mon - Fri 9am - 6pm daily • Sat 10am - 4pm

3 Alma Lane Buxton Square, Nelson

T. 03 546 8474

E. [bedelia@xtra.co.nz](mailto:bedelia@xtra.co.nz)

[www.nelsonbeauty.co.nz](http://www.nelsonbeauty.co.nz)



nelson beauty therapy

## HEALTH 2000 - HEALTH & SPORTS NUTRITION 28

We offer a range of vitamins and supplements, natural skincare, herbal remedies, sports nutrition and weight management products from leading manufacturers. Our staff are trained and qualified to give you the best advice for your natural health needs.

**Hours:** Mon - Fri 9am – 5.30pm  
Sat 9am – 2pm

Nelson Central Arcade, off Trafalgar Street, Nelson  
T. 03 5487294

E. h2knelson@gmail.co.nz  
www.health2000.co.nz

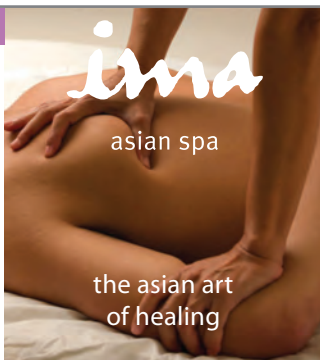


## IMA ASIAN SPA 29

We offer traditional Thai massage, aromatherapy oil massage, sports deep tissue, back, neck and shoulder tension release, reflexology, body and facial treatments for both men and women in a relaxing environment.

**Hours:** Tue - Sat 10am – 7pm  
123 Hardy Street, Nelson

T. 03 545 6956  
E. patyth@yahoo.com  
www.imaspa.co.nz



## NELSON DAY SPA 30

**City Day Spa & Beauty Care.** Our spa is an oasis of peace, quiet and pampering right in the heart of Nelson City. A must do when you are visiting! Only the finest products and organic ingredients are used in our spa. Come and see us, our qualified staff are ready to look after you.

- Massage/Body Treatments
- Eyelash Extension
- Facial
- Acrylic/Gel Nail
- Hair/Scalp treatments
- Sauna/Spa
- Shellac Nail
- Waxing
- Tanning
- Pedicure
- Gifts

**Hours:** Mon - Sat 9am – late  
Sun 10am – 5pm - outside hours available

86 Bridge Street, Nelson  
T. 03 548 1699  
www.nelsonspa.co.nz



**Nelson Day Spa**  
*City Day Spa & Beauty Care*

## PRICES PHARMACY 31

Professional advice, friendly staff and convenient car parking.

- Photo developing
- Vitamins
- Passport photos
- Travel needs
- Ear piercing
- Sunglasses
- Emergency contraception
- Hair care
- Fine fragrance
- Personal care
- Cosmetics & skincare
- Sun protection

**Hours:** Mon - Fri 8am – 8pm • Sat 9am – 8pm  
Sun & Public Holidays 10am – 6pm  
296 Hardy Street, Nelson. Crn Collingwood & Hardy St  
T. 03 548 3897

E. pricespharmacy@clear.net.nz



*Prices Pharmacy*

# Fashion, Footwear & Accessories

Explore the myriad of fashion, footwear and accessories right here in the heart of Nelson City. Discover the hottest fashion trends, the best in weekend chic, casual beach culture or outdoor adventure gear.

Whether it's top fashion labels, local designers, event wear or funky street wear, there's a range of fashion boutiques and stores offering something for everyone.

There's a fantastic range of menswear too, with everything from board shorts and outdoors gear to smart-casual and formal.

When it comes to shoes, Nelson City has

a slipper to fit every Cinderella! Gorgeous heels, wedges, casual slides and stylish leather boots, you can never have too many shoes!

Finish off your outfit with a beautiful bag, gorgeous jewellery, a colourful scarf, the essential sun hat and of course, the designer sunglasses!

## BEETEEES – NELSON & MOTUEKA

32

We offer ladies fashion with a point of difference. We are one of the largest stockists of Women's Fashion in the area – catering for all adult age groups. Our experienced team look forward to assisting you.

**Hours:** Mon - Fri 9am – 5pm  
Sat 10am – 1pm

48 Bridge Street, Nelson

T. 03 546 8700

205 High Street, Motueka

T. 03 528 7460

E. glen@beetees.co.nz

[www.beetees.co.nz](http://www.beetees.co.nz)



## COOPER & ROUGE

33

Quality women's fashion from New Zealand's leading designers. The friendly and experienced team will help you find the perfect garment. Our adjoining café is the ideal place to meet over coffee. We carry these fabulous labels:

- NomD
- Redhead
- Loobies Story
- NYDJ
- Chocolat
- David Pond
- Ritual
- Leslie Herbert

**Hours:** Mon - Fri 9.30am – 5pm  
Sat 10am – 2pm (and by appointment)

56 Bridge St, Nelson

T. 03 539 4399

E. nikki@cooperandrouge.co.nz

[www.cooperandrouge.co.nz](http://www.cooperandrouge.co.nz)





## FASHION ISLAND

34

Love shopping? Love fashion? Fashion Island is here... just for you! Fashion Island is a fabulous Nelson shopping destination featuring favourite brands in fashion, footwear, beauty, homewares and accessories. With more than 25 stores - including two supremely stylish cafés - Fashion Island is the ultimate shoppers' paradise!

**Hours:** Open 7 days Mon - Fri 9am - 5.30pm

Sat 9am - 5pm Sun 10am - 4pm

Corner Hardy & Morrison Streets, Nelson

T. 03 548 9191

E. [Joanne@Fashionisland.co.nz](mailto:Joanne@Fashionisland.co.nz)

[www.fashionisland.co.nz](http://www.fashionisland.co.nz)



## FOXY LADY NELSON

35

NELSON'S LINGERIE, SWIMWEAR AND NIGHTWEAR SPECIALISTS. Pop in and talk to our professional and friendly team of bra fitters. Sizes 10-26. We are also Nelson's only retailer specialising in mastectomy bras, prostheses and mastectomy swimwear.

- Baku
- Bassoni
- Berlei
- Deshabille
- Elle McPherson
- Essence
- Fayreform
- Hot Milk
- Moontide
- Sea Folly
- Triumph
- Shapewear

**Hours:** Mon - Fri 9am - 5pm • Sat 11am - 2pm

151 Trafalgar Street, Nelson

T. 03 548 3943

E. [julie@foxyladynelson.co.nz](mailto:julie@foxyladynelson.co.nz)

[www.foxyladynelson.co.nz](http://www.foxyladynelson.co.nz)

[facebook.com/FoxyLadyNelson](https://facebook.com/FoxyLadyNelson)



## HOGEYS SURF

36

Hogey's Surf, Nelson's original surf store with all the big brands. Quiksilver, Roxy, Billabong, Ripcurl, Seafolly, Hurley, Federation, Havaianas and more... Also stockists of surfboards, and surf accessories, leg ropes, wax etc. Come in and meet Hogey and his awesome team and check out the latest gears for the season.

**Hours:** Mon - Thurs 9am - 5.30pm • Fri 9am - 7pm

Sat 9am - 4.30pm • Sun 10am - 4pm

247 Trafalgar Street, Nelson

T. 03 548 4011

[www.hogey.co.nz](http://www.hogey.co.nz)



## JAYS FASHIONS

37

Jays on Bridge Street is locally known as a Nelson fashion institution! The store stocks top New Zealand and Italian designer labels.

- Calliope Rd
- Caroline Sills
- Cooper
- by Trelise
- Denny Rose
- Diesel
- Jane Daniels
- Miss Sixty
- New London
- Paula Ryan
- Trelise Cooper
- Verge
- Visage
- VSSP
- Wildfox

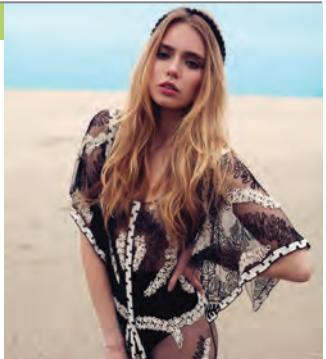
**Hours:** Mon - Fri 9am - 5pm • Sat 10am - 2pm

82 Bridge Street, Nelson

T. 03 548 3996 E. [jaysfashions@xtra.co.nz](mailto:jaysfashions@xtra.co.nz)

[www.jaysfashions.co.nz](http://www.jaysfashions.co.nz)

[facebook.com/JaysFashions](https://facebook.com/JaysFashions)



## KITTS SHOES

38

Kitts Shoes is the place to go for quality fashion shoes. Stockists of celebrated NZ and international labels Ziera, Addiction, Softflex, Josef Seibel, Clarks, Naot, Rieker, Khrio and Fly London. These labels are famed for their gorgeous blend of style, edgy design and superb comfort.

**Hours:** Mon - Fri 9am – 5.30pm

Sat 9.30am – 4pm

Sun 11am – 3pm

240 Trafalgar Street, Nelson

T. 03 548 3079

E. [kitts.shoes@gmail.com](mailto:kitts.shoes@gmail.com)



## MARIPOSA

39

Indulge in some retail colour therapy at Mariposa! Seriously funky streetwear for men and women. Casual wear with a point of difference. Accessories including beaded and sterling jewellery, hats, funky bags and scarves and much, much more.

**Hours:** Summer 9am – 5.30pm daily

Winter 10am – 5pm daily

263 Hardy Street, Nelson

T. 03 548 7789

37 Commercial Street, Takaka

T. 03 525 7548

E. [Mariposaoffice@xtra.co.nz](mailto:Mariposaoffice@xtra.co.nz)

[www.mariposaclothing.co.nz](http://www.mariposaclothing.co.nz)

mariposa



Unique Clothing, Divine  
Jewels, Heavenly Gifts...



## MARSHALLS FASHIONS

40

For friendly, experienced service and a great range of fashion labels, come see the team at Marshalls Fashions.

- Newport
- Macjays
- Wraggs
- Studio
- Meredith
- Betty R
- Black Pepper
- Glengyle
- Ebony
- Bittermoon
- Xquisite
- Cachet
- Sarah Jane
- Lisa Law
- Revue

**Hours:** Mon - Fri 9am – 5.30pm

Sat 9.30am – 3pm • and by appointment

66 Bridge Street, Nelson

T. 03 548 3950



## PROFILE EVENTWEAR SPECIALISTS

41

### Cocktail – Party – Ball – Bridal

Nelson's largest range of dresses and NZ Designer day wear through to bags, hats, scarves and exquisite jewellery to transform your look. Full Stylist/Ordering & Fitting service available. A unique experience.

**Hours:** Mon - Fri 9am – 5pm-ish

Sat 9.30am – 3pm-ish.

Public Holidays 11am – 2/3pm-ish

163 Hardy Street, Nelson.

T. 03 548 8770 M. 027 624 4756

[www.profile.net.nz](http://www.profile.net.nz)

[facebook.com/www.profile.net.nz](https://facebook.com/www.profile.net.nz)



## SHINE DESIGN STORE

42

Shine - jewellery and design for you!

Shine is a contemporary design store with a fabulous range of gorgeous jewellery, beautiful bags, great gifts and New Zealand art. Shine are exclusive Nelson stockists of:

- Lisa Hoskin
- Elk Jewellery & Clothing
- Dyrberg / Kern
- Dean Hawkins
- Thomas Sabo

**Hours:** Mon - Fri 10am - 5pm

Sat 10am - 2pm

225 Hardy Street, Nelson

T. 03 548 4848

[www.shinedesignstore.co.nz](http://www.shinedesignstore.co.nz)



## SOUL

43

Quality comfort footwear with a point of difference. Unique styles for men women and children from around the world.

**Hours:** Summer 9am – 5.30pm daily

Winter 10am – 5pm daily

257 Hardy Street, Nelson

T. 03 548 7789

49 Commercial Street, Takaka

T. 03 525 7542

E. [mariposaoffice@xtra.co.nz](mailto:mariposaoffice@xtra.co.nz)

[www.mariposaclimbing.co.nz](http://www.mariposaclimbing.co.nz)



## TAYLORS..WE LOVE SHOES

44

While in Nelson don't miss this unique opportunity to go shopping. You'll fall madly in love with one of the most exciting fashion experiences in New Zealand. An exquisite and extensive collection of women's and men's shoes handpicked from around the globe.

**Hours:** Mon - Fri 9am – 5.30pm

Sat 9.30am – 4pm

Sun 11am – 3pm

245 Trafalgar Street, Nelson

T. 03 548 7863

[www.weloveshoes.co.nz](http://www.weloveshoes.co.nz)



## TROUBLE & FOX/SIDECAR

45

Two great stores with an eclectic mix of clothing and accessories from NZ + International designers. Find us both in Bank Lane (lane runs next to BNZ, links Trafalgar St to Sat. Markets) - and see what's in-store for both men and women...featuring Ruby, COOP, Lonely Hearts, Industrie, I Love Ugly, Federation and more!

**Hours:** Mon - Fri 10am – 5pm

Sat: 9.30am – 4pm

Shop 4, Bank Lane, Nelson

T. 03 548 4303

E. [hello@troubleandfox.co.nz](mailto:hello@troubleandfox.co.nz)

[www.troubleandfox.co.nz](http://www.troubleandfox.co.nz)



# Restaurants, Cafés & Bars

From casual, outdoor or ethnic eating to fine dining, Nelson City has a vibrant selection of cafés and restaurants to tempt your taste buds. Seasonal menus specialise in fresh locally grown produce, seafood & shellfish and of course, a selection of local wines and beers.

Coffee connoisseurs won't be disappointed either; the café scene is built around the perfectly roasted and brewed bean! Find your favourite blend at one of Nelson City's many cafés and enjoy your daily fix indoors or outside in the sun!

Nelson's night-life is defined by great live music venues, locally-crafted boutique beers and award-winning local wines. There's a great range of late night offerings for all ages and tastes.

## 623 - CAFÉ • RESTAURANT • BAR

46

Two great locations, stylish surroundings with plenty of room whether you want to drink, dine or dance! Exceptional atmosphere, alfresco seating, massive menus and live entertainment - join up for daily Club Deals, and there's no public holiday surcharge ever! Experience Nelson's premium dining, drinking and entertainment venues, in Nelson City and Tahunanui.

**Hours:** Open 7 days from 7.30am  
223 Hardy Street, Nelson  
623 Rocks Road, Tahunanui  
T. 03 548 6230  
E. [info@623.co.nz](mailto:info@623.co.nz)  
[www.623.co.nz](http://www.623.co.nz)



## CAFÉ AFFAIR

47

We select the best of Nelson and Marlborough wines and foods and present them to you in a form to be savoured. Open for breakfast, lunch and dinner every day. Express cabinet food and coffee or try something from our menus like prime fillet steak or fish of the day to name a few. Unique to Nelson is the stonegrill dining - with your meal served cooking on a sizzling heated stone at your table.

**Hours:** Daily 10am till late  
295 Trafalgar Street, Nelson  
T. 03 548 8295  
E. [cafe.affair@xtra.co.nz](mailto:cafe.affair@xtra.co.nz)  
[www.cafeaffair.co.nz](http://www.cafeaffair.co.nz)



## COLUMBUS COFFEE NELSON

48

Great coffee, great food and great service all in one great location! Right in the heart of the Fashion Island shopping centre, we offer a wide variety of homemade food, including an extensive breakfast menu. Sit inside or enjoy Nelson's sunny climate in our courtyards – parking at the door!

**Hours:** Mon - Fri 8am – 5.30pm

Sat 8am – 5pm, Sun 9am – 4pm

Fashion Island, 244 Hardy Street, Nelson

T. 03 545 6454

E. [nelson@columbuscoffee.co.nz](mailto:nelson@columbuscoffee.co.nz)

[www.columbuscoffee.co.nz](http://www.columbuscoffee.co.nz)



## DI PIERRIS

49

Delicious Italian Gourmet Food at its finest, gourmet style deli cabinet hot or cold, made fresh on the premises every morning. Scrumptious breakfasts, great range of tasty lunch dishes including tasty pasta, pizza, salads, Italian cakes and slices, espresso coffee and juices. Dine in our relaxing café atmosphere or to take on the run. Buon appetito!

**Hours:** Mon - Fri Open 6.30am for breakfast till late afternoon

19 Buxton Square, Nelson

T. 03 548 3044



## FORD'S RESTAURANT & BAR

50

Ford's, one of Nelson's most popular restaurants combines fresh local ingredients with experienced chefs to create delicious dishes. From seafood to wild game - choosing will be difficult! The contemporary and intimate interior invites you in to enjoy brunch, dinner or a quiet drink with friends.

**Hours:** 7 days. 8am to late, Mon - Fri  
9am to late, Sat - Sun

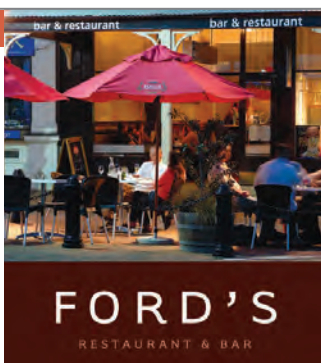
276 Trafalgar Street, Nelson

T. 03 546 9400

E. [eat@fordsnelson.co.nz](mailto:eat@fordsnelson.co.nz)

[www.fordsnelson.co.nz](http://www.fordsnelson.co.nz)

[facebook.com/FORDSNELSON](https://www.facebook.com/FORDSNELSON)



## LAMBRETTA'S CAFÉ & BAR

51

Lambretta's is the busy café that captures what Nelson is all about; sunshine, fresh food, great coffee, fine wine and people meeting people. Local and visiting "foodies" value the freshly prepared selection of great food, Ignition Coffee and breakfast served until 3pm so bring the kids and scoot on down.

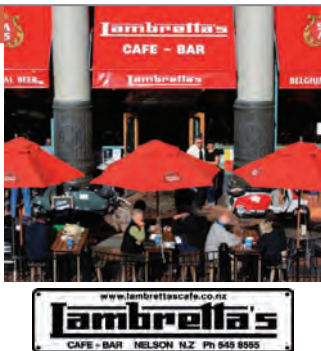
**Hours:** Mon - Sat 8am – 4pm  
Sun 8.30am – 3pm

204 Hardy Street, Nelson

T. 03 545 8555

E. [info@lambrettascafe.co.nz](mailto:info@lambrettascafe.co.nz)

[www.lambrettascafe.co.nz](http://www.lambrettascafe.co.nz)



## MANGO

52

Where Indian and Malaysian food meets kiwi! We serve Asian fusion food that's delicious, healthy AND affordable. We use fresh produce only, no processed or frozen short-cuts in our kitchens! With yummy options starting at just a few dollars, we offer true quality for money. **Show us this ad and receive a free Naan bread with your meal.**

**Hours:** Mon - Sat 11.30am – 2pm • Daily 5pm till late  
227 Hardy Street, Nelson

**T.** 03 539 4916

244 Queen Street, Richmond

**T.** 03 544 3278

**E.** nelson@mangoonline.co.nz

Order online at [www.mangoonline.co.nz](http://www.mangoonline.co.nz)

a whole new world of  
**flavour**



- Dine-in
- Takeaway
- Lunch
- Dinner

[WWW.MANGOONLINE.CO.NZ](http://WWW.MANGOONLINE.CO.NZ)

## MILLERS ACRE CAFÉ & CREPERIE

53

Sweet or savoury, any time of day is good to enjoy a delicious, freshly made crepe! Just opposite the I-Site with a sunny outdoor area it's the ideal place to catch up with friends or enjoy a quick lunch. Come and enjoy our delicious food and yummy coffee.

**Hours:** Mon - Fri 8.00am - 4pm

Sat 10am - 4pm

Summer - 7 days with extended hours

Millers Acre /i-site

1/37 Halifax Street, Nelson

**T.** 03 545 9091

**E.** lizzybfree@xtra.co.nz



## MIYAZU JAPANESE RESTAURANT

54

Authentic flavours of the orient are blended with the freshest in local seafood and produced to create a mouth-watering experience. Sample from the traditional a la carte menu, sushi bar or choose to be wowed by the spectacular skills of our Teppan Yaki chef.

**Hours:** Tues - Sat 6pm till close

Rutherford Hotel Nelson, Trafalgar Square, Nelson

**T.** 03 548 2299

**T.** Freephone 0800 437227

**E.** enquiries@rutherfordhotel.co.nz

[www.rutherfordhotel.co.nz](http://www.rutherfordhotel.co.nz)



## 'OCEANO' - NELSON'S SPECIALIST SEAFOOD RESTAURANT

55

This part of New Zealand is renowned for its delectable, fresh seafood and at Oceano you can select your perfect meal from the live crayfish tank or from a wide range of seafood in our a la carte menu.

**Hours:** Mon - Sun 6am - 10am

Mon - Sun 6pm till close

Rutherford Hotel Nelson, Trafalgar Square, Nelson

**T.** 03 548 2299

**T.** Freephone 0800 437227

**E.** enquiries@rutherfordhotel.co.nz

[www.rutherfordhotel.co.nz](http://www.rutherfordhotel.co.nz)



## SPRIG & FERN

56

The Sprig and Fern Taverns provide a genuine Kiwi tavern experience - welcoming and unpretentious. We proudly serve our superb, award-winning range of beers and ciders, lovingly crafted right here in Richmond, Nelson. We deliberately have no TVs or pokies, so good conversation and human interaction abounds.

134 Milton Street, Nelson • T. 03 545 7117  
280 Hardy Street, Nelson • T. 03 548 1154  
108 Queen Street, Richmond • T. 03 544 4900  
54 Ellis Street, Brightwater • T. 03 542 2323  
Wallace Street, Motueka • T. 03 528 4684  
13 Beach Road, Tahuna



## THE VIC MAC'S BREWBAR

57

The home and birthplace of Mac's Beer and one of Nelson's most iconic pubs. With quirky modern decor in a historic building, The Vic has a great atmosphere and serves quality pub food. Regular Live Music. The Vic also boasts a new function and meetings venue – "The Upper Room".

**Hours:** 11am – late  
281 Trafalgar Street, Nelson  
T. 03 548 7631  
E. [info@vicbrewbar.co.nz](mailto:info@vicbrewbar.co.nz)  
[www.vicbrewbar.co.nz](http://www.vicbrewbar.co.nz)



## VERDICT RESTAURANT & ALE HOUSE

58

The Verdict Ale House is a wonderful place to relax in the sun or to host your next big event.

We can cater for your occasions or just pop down for a pint. There is a versatile menu of delicious food and being a little further down Bridge St, we are free of the noisy bustle of the clubs.

**Hours:** 10am – Late 7 days  
189 Bridge Street, Nelson  
T. 03 548 4499  
E. [damorichards@yahoo.co.nz](mailto:damorichards@yahoo.co.nz)  
[www.verdictalehouse.co.nz](http://www.verdictalehouse.co.nz)



## YOGI'S FROZEN YOGURT

59

Come and try our deliciously healthy frozen yogurt & enjoy making your own creation. We offer many different flavours and toppings ranging from fresh fruit, chocolate, lollies, sauces and so much more! We also have coffee, milkshakes, smoothies, fresh juices, crepes etc.

**Hours:** 11am – late  
166 Hardy Street, Nelson  
T. 03 548 3486  
E. [yogisfrozenyogurt@outlook.com](mailto:yogisfrozenyogurt@outlook.com)  
[facebook.com/yogi's](https://facebook.com/yogi's)

Yogi's  
self serve frozen yogurt

# City Map



## NELSON CITY - MAP KEY

- |                           |                     |
|---------------------------|---------------------|
| Advertiser Ref Code       | Nelson City Council |
| Automobile Association    | NZ Post Office      |
| Car Parking               | Public Toilets      |
| Cathedral/Steps           | Supermarkets        |
| I-site Information Centre | Public Libraries    |



# City Map Legend

Ref #: Store name Page

## Getting Around

1	N Bus 1	4
2	Abel Tasman Sea Shuttle	5
3	Nelson Bike Hire	5
4	Nelson City Taxis	5
5	Move Nelson	5

## Nelson City Top Attractions

6	Nelson Farmers Market	7
7	NTT I-Site	7
8	Museum	7
9	Nelson Markets	7

## Nelson Arts & Galleries

10	Flame Daisy	9
11	Jens Hansen	9
12	Rutherford Gallery	9
13	Suter Art Gallery	9

## Shopping

14	Aromaflex	11
15	Basecamp	11
16	Creations Unlimited	11
17	Cruellas Natural Fibre Boutique	11
18	Ivy Flower Art	12
19	Living Light Candles	12
20	Magnificent New Zealand Gifts	12
21	Nelson City Cameras	12
22	Nelson Hunting & Fishing	13
23	Paper Plus Nelson	13
24	Prego Mediterranean Foods	13
25	Simply New Zealand	13

## Health & Beauty

26	Carol Priest Natural Cosmetics	14
27	Nelson Beauty Therapy (Dermalogica)	14

Ref #: Store name Page

28	Health 2000	15
29	Ima Asian Spa	15
30	Nelson Day Spa	15
31	Prices Pharmacy	15

## Fashion, Footwear & Accessories

32	Beetees	16
33	Cooper & Rouge	16
34	Fashion Island	17
35	Foxy Lady	17
36	Hogeys Surf	17
37	Jays Fashions	17
38	Kitts Shoes	18
39	Mariposa Clothing	18
40	Marshalls	18
41	Profile	18
42	Shine Accessories	19
43	Soul by Mariposa Footwear	19
44	Taylor's we love shoes	19
45	Trouble & Fox	19

## Restaurants, Cafés & Bars

46	623	20
47	Café Affair	20
48	Columbus Coffee	21
49	Di Pierris Café	21
50	Fords Restaurant & Bar	21
51	Lambrettas Café	21
52	Mango Café	22
53	Millers Acre Café & Creperie	22
54	Rutherford Hotel – Miyazu	22
55	Rutherford Hotel – Oceano	22
56	Sprig & Fern	23
57	The Vic Macs Brew Bar	23
58	Verdict	23
59	Yogi's Fresh Yoghurt	23

## SUMMER listening















Or Listen Live: [www.newstalkzb.co.nz](http://www.newstalkzb.co.nz) [www.classichits.co.nz](http://www.classichits.co.nz) [www.radiosport.co.nz](http://www.radiosport.co.nz) [www.zmonline.com](http://www.zmonline.com)  
[www.thecoast.net.nz](http://www.thecoast.net.nz) [www.hauraki.co.nz](http://www.hauraki.co.nz)

# Nelson Regional Map

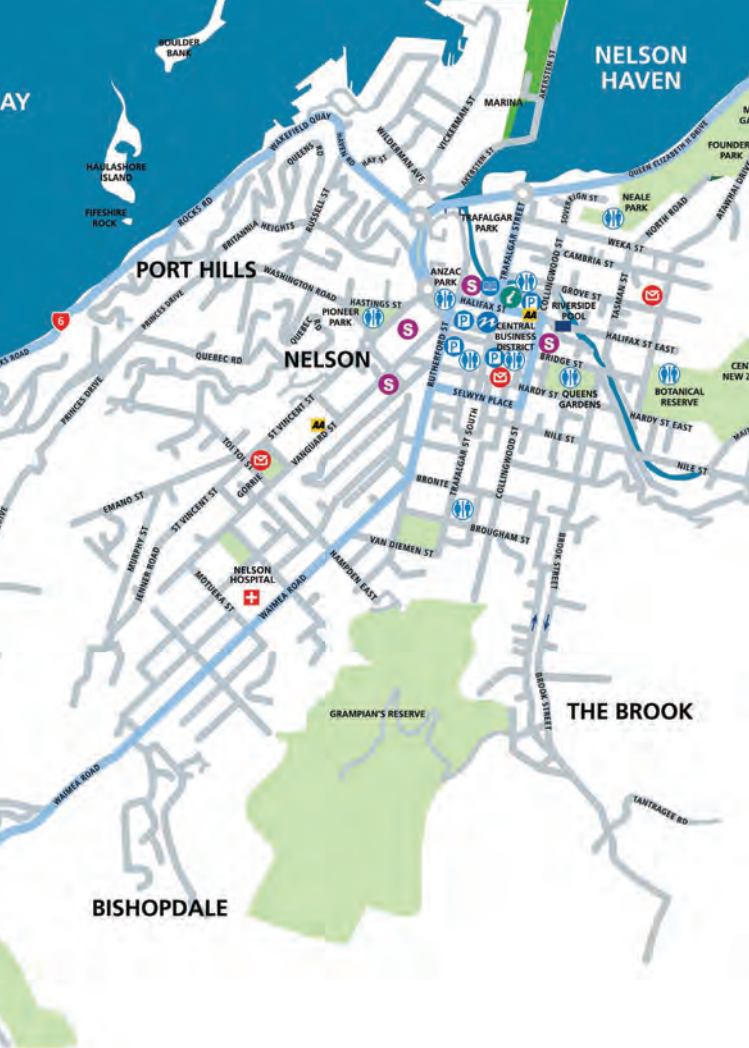


TASMAN B



## NELSON REGION CITY - MAP KEY

- |  |                        |  |                     |
|--|------------------------|--|---------------------|
|  | Car parking            |  | Supermarkets        |
|  | Public toilets         |  | Medical services    |
|  | NZ Post Office         |  | Nelson City Council |
|  | Automobile Association |  | Scenic Drive        |



# Nelson. Love it.

61

**Katrina Smith**  
Weekdays 10-2pm  
**Blair Kidney**  
Weekdays 2-7pm

**Si and Gary**  
Weekdays  
6-10am



Also on 92FM in Golden Bay and 94.1FM in Murchison/St Arnaud

# YOUR OFFICIAL GUIDE TO NELSON CITY

---



## Nelson City Guide

A Uniquely Nelson & Nelson City Council publication

**P.** (03) 546 8405 **E.** [info@uniquelynelson.co.nz](mailto:info@uniquelynelson.co.nz)

Published Annually

Project Management & Content: Uniquely Nelson

Publication Design: Downing Design

[www.uniquelynelson.co.nz](http://www.uniquelynelson.co.nz)

[www.facebook.com/UniquelyNelsonNZ](https://www.facebook.com/UniquelyNelsonNZ)

[www.twitter.com/@UniquelyNelson](https://www.twitter.com/@UniquelyNelson)

