

Learning at the Library
 Tai Chi with the Nelson Taoist Tai Chi Club. "Have a go" for free on Thursday 11 February, 12-1pm, followed by a 6 week introductory class (\$30) Thursdays 18 February-24 March, 12-1pm.
 Venue: Elma Turner Library Activity Room. Fee payable to the Club on the day.
Te Reo: Learn the basics of the Māori language in a free 10 week course, presented by Cindy Batt.
 Venue: Elma Turner Library Activity Room. Wednesdays 10 February-13 April, 12.30-1.30pm.
 All welcome, but booking is required for both classes. Phone 546 8100 or email library@ncc.govt.nz.

Big Bike Tune-Up at the Nelson Saturday market
 Look for the Get Moving and Council banners at the market this weekend, Saturday 13 February, from 8.30am-1pm to get your free bike check and tune. Basic repairs can be done on the spot. Some new parts (if required) can be supplied for a small charge.

Submissions close soon on Woodburner Plan Change
 Get in quick to have your say on Nelson City Council's proposed Woodburner Plan Change (Plan Change A3) before submissions close on Wednesday 17 February at 5pm.
 The plan change proposes to allow additional Ultra Low Emission Burners (ULEBs) in some areas of the city on the basis that there will be improvements to woodburner use, generating less smoke.
 More information on the plan change is available on Council's website, nelson.govt.nz (search phrase = woodburner plan change).
 The proposed plan change document, the accompanying reports and submission form are available at the Customer Service Centre, Nelson libraries and on the council website.



Nelson Opera in the Park 2014. Photo: John-Paul Pochin.

When: Sat 13 Feb, 7.30-10pm (gates open at 5.30pm)
Where: Trafalgar Park
Prices: \$25 adult, child (5-15) \$5, child under 5 free (plus Ticketdirect service fees)

Immerse yourself in Opera this weekend

Nelson Opera in the Park returns to Trafalgar Park this Saturday 13 February, with some of New Zealand's best opera singers alongside stellar contemporary performers.

Kiwi opera stars Anna Leese and Jared Holt will perform with Orchestra Wellington, showcasing some of the most well-known operas.
 After ten years, New Zealand music icon, Dave Dobbyn, will again take to the Nelson Opera in the Park stage, where he will treat the audience to kiwi favourites along with debuting a track from his new album.
 Fresh from touring the world, the Modern Māori Quartet also return to Nelson after their success here as part of the 2014 Nelson Arts Festival.
 Entertainer and crowd favourite Jackie Clarke returns and the cappella group Jubilation Choir will also perform alongside an orchestra for the very first time.

Mayor Rachel Reese says this is an opportunity to enjoy a world-class event in the heart of the city.
 "What a great way to spend a beautiful summer evening - with a picnic tea, watching international artists showcasing their talent right here in Nelson."
 "Council has supported this event since its inception 17 years ago and as Mayor of Nelson it's fantastic to see its continued success."
 Pack a picnic and soak up the atmosphere at this wonderful night of music.
 Tickets are still available at the Theatre Royal, iSITE, online at ticketdirect.co.nz, or by phoning 03 548 3840 or 0800 224 224.

Getting there
 Parking in Paru Paru Road will not be available for Opera in the Park. Alternative parking is available at Neale Park -



Major upgrade for Quarantine Road roundabout

Work is underway to upgrade the Quarantine Road roundabout on SH6. This is a joint project between NZTA and Nelson City Council.
 The \$2.2m roundabout upgrade is one of the Nelson Regional Land Transport Plan (RLTP) projects for the 2015-2018 period.
 Projections show strong traffic growth in this area over the next 20 years with the new roundabout design catering for this expected growth.
 Fulton Hogan contractors have started with work away from the road to avoid disrupting holiday traffic. Main work will begin in March and run through to July.
 Speed restrictions are in place for the duration of the work and traffic will, at some times, be restricted to a single lane.
 Thank you for your patience.



enter via Sovereign Street.
 Pedestrian access to Trafalgar Park will be via Sovereign Street and Wainui Street.
 Please follow all signage and directions from parking marshals.
 Parking for people with disabilities will be available in Hathaway Terrace. Cycle parking is available next to the ticket booths.

Feedback on Nelson Plan

Nearly 300 people provided suggestions for the Whakamahere Whakatū Nelson Plan project when Council talked to the community in November last year.

Many residents contributed across a range of topics. The most popular topics were Built Environment and City Centre Development (92 suggestions each) followed by Freshwater (50), Air Quality (48) and Biodiversity (43). There were a range of views on each topic. For instance, 77% of those who commented on heritage, thought it was important that heritage was retained or enhanced, 6% wanted reduced controls regarding heritage and 16% were neutral.

The Whakamahere Whakatū Nelson Plan is a review of all of the Council's regulatory plans established under the Resource Management Act 1991 (RMA). It will look to manage how we grow, develop and protect our built and natural environment; for example setting limits for subdivision, building height, earthworks or discharging pollutants into waterways.

A range of suggestions had relevance to the Long Term/Annual Plan process. These included transport operations (e.g. road

surfacing), CBD investment, water supply (including fluoridation), alcohol policy, solid waste, the arts and rates. The Nelson Plan is different to Council's Long Term/Annual Plan process, which considers and decides on levels of service and budgets for operational functions and capital projects.

Where to next?
 Staff will now review the feedback received and, in partnership with iwi and stakeholders, develop a Draft Regional Policy Statement (RPS). The Draft RPS will be made available to the community for feedback around April/May.

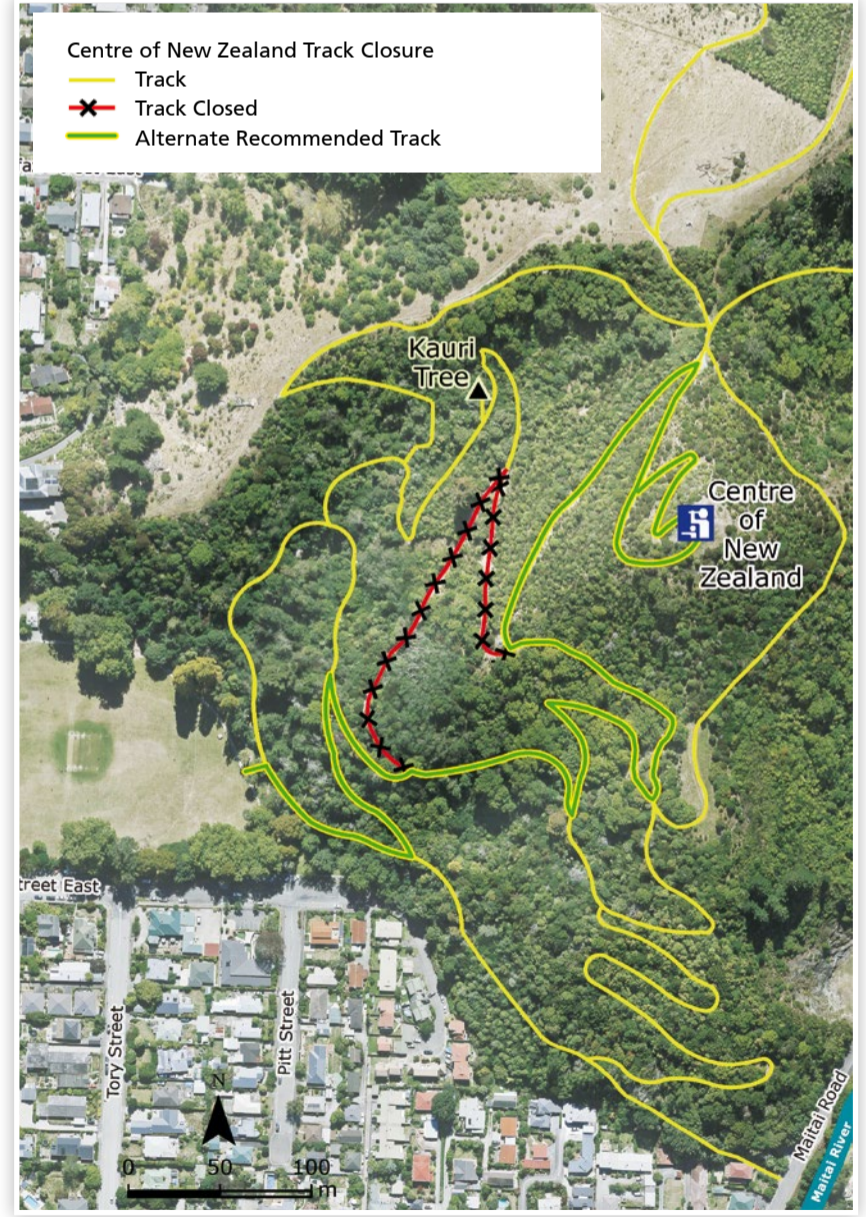


Stormwater and walking track upgrades scheduled

Work to repair two slips on the Centre of New Zealand walkway will get underway on 15 February. The repair work to two sections of track that were damaged during the heavy rain event of December 2011 is expected to take eight to 12 weeks.

Alternative routes are available - see map - and walkers are advised to follow all signage and keep away from the work area.
 On Waimea Road, storm water upgrades to York Stream and Little Go Stream are scheduled to start on 1 March. The work will see some of Nelson's key infrastructure upgraded to cope with Q100 floods.
 There will be some disruption to traffic flows but traffic management will be in place throughout the work period. Council asks drivers to drive safely and follow all contractor's signage and directions.

nelson.govt.nz/projects



Nelson Central School 'Nga Tamariki Toa o Te Pouahi' Kapa Haka group received funding from the Creative Communities Scheme to purchase materials for their uniforms last year.

Funding for local arts initiatives

Applications are still open for Council's latest Creative Communities Scheme funding round.

The latest round closes 1 March 2016. Applications for financial assistance can be made for projects which:
 • Take place within the Nelson City Council wards only
 • Have an arts focus and provide clear community benefits
 • Start after 1 April 2016.

Project assistance is usually up to \$1,200 per allocation, although worthy projects requiring greater assistance will be considered. Funding decisions are usually confirmed within six weeks from the closing date.
 Guidelines and application forms can be found on the Arts Council website acn.org.nz or contact artscouncilnelson@paradise.net.nz or 548 4640.

acn.org.nz

Call for volunteers at the Citizens Advice Bureau (CAB)

Every day, the friendly volunteers at CAB Nelson Tasman help people find answers to all kinds of questions. Some queries are simple, while others need the story untangled, and possible options researched. CAB also works closely with other agencies, and may refer clients for specialist advice or support.
 If you're interested in becoming a volunteer for CAB, applications are now open for this month's training. You can contact CAB Nelson Tasman for an information pack explaining what's required, in person at 9 Paru Paru Road, Nelson, phone 03 548 2117, or email nelsontasman@cab.org.nz.
 Applications close Friday 12 February 2016, with another intake in July. Initial training is 9.30am-3.30pm Thursdays 18 and 25 February, then 10 and 17 March.

Meetings

For a full list of Council meetings go to:
nelson.govt.nz/meetings

What's on?

For a full list of Nelson events go to:
itsn.co.nz

