



Council deliberates 10 Year Plan

The Mayor and Councillors have now heard submissions and are deliberating on the priorities it has set in its Long Term Plan 2015–2025. Council will approve the final document in June, and it will come into effect in July 2015. Over 500 submissions were received and Council would like to thank you for your input.

More inside...

Local firm to lead first stage of Trafalgar Centre Reopening Project
page 2

Mobile app launched to get us out of our cars
page 3

Revamped playground for Victory
page 5

 Check out our website
nelson.govt.nz

 Phone us on
03 546 0200

 Follow us on Twitter
twitter.com/nelsoncitynz

 Have your say on Facebook
facebook.com/nelsoncitycouncil

 Watch us on YouTube
youtube.com/nelsoncouncil

To sign up for electronic Live Nelson go to:

 facebook.com/nelsoncitycouncil



Railway Reserve gets new mural



Upgrading your footpaths



Broadgreen House temporary closure

Enhancing our 'urban environment'



Photo: Phillip Rollo

Seven of Nelson's existing bylaws have been combined in a new Urban Environments Bylaw, adopted earlier this month by Nelson City Council. It covers: keeping of animals, urban amenity, trading in public places, control of alcohol in public places, reserves, and burial and cremations.

Part of the bylaw on sandwich boards was put back to the Planning and Regulatory Committee to further consider the implications of its recommendation to move the boards to the kerb.

Under the existing bylaw, sandwich boards are required to be beside shop frontages for businesses at ground floor level and beside the kerb for businesses at second floor level. A 2.0m pedestrian access way is also required.

Key features of the bylaw are:

- The inner city alcohol ban area has been extended to include the area bounded by Riverside Drive, Collingwood Street, Hardy Street and Tasman Street from 9pm to 7am every day.
- People can now apply for a permit to hold a low risk event involving alcohol in areas where alcohol is normally banned, for example a celebratory drink after a wedding in Queens Gardens.
- Alcohol bans apply at all times in Victory Reserve and by the Victory shops, and Wigzell Park.
- No specific limits on numbers of cats, beehives or rabbits, however Council encourages responsible ownership of all animals. Poultry houses must now be set back five metres from neighbours' houses.
- Offering to wash vehicles in public places where this is a traffic hazard is not permitted (such as window washing at intersections).
- A one hour time limit for buskers, up from half an hour, but they must still seek permission from the

owner or manager of the adjacent shop, and provide their name and contact details to Council.

Planning and Regulatory Committee Chair Brian McGurk says the aim of combining various topics into one bylaw makes it easier to keep track of the rules that apply in Nelson's urban areas.

"There are valid reasons for each rule in the bylaw. For instance, the bylaw provision relating to trading in public places is designed to ensure the streets are accessible to all, people feel safe, and that all businesses are treated fairly. The Council wants Nelson's inner city streets to be lively places, where street performers take their craft seriously and pedestrians enjoy the buzz on the streets.

"The part of the bylaw on urban amenity aims to maintain and enhance the attractiveness of, and safety in Nelson's urban environments. The idea is to encourage consideration of residents and visitors to our city, including numbering of buildings to make places easier to find.

"Ultimately this bylaw supports the community's well-being and aims to make Nelson a great place to live, work, play and visit."

The bylaw (with the exception of sandwich boards) takes effect on 2 June 2015 to allow people time to become familiar with the new rules.

Copies of the bylaw will be available at the Customer Service Centre and via the Council's website:

Local firm to lead first stage of Trafalgar Centre Reopening Project

Local Nelson firm Gibbons Construction, working in partnership with Downer, have been engaged by Nelson City Council for Stage 1 (Detailed Design Phase) of the Trafalgar Centre Reopening Project.

The combined bid between Gibbons Construction and Downer was selected as the preferred tender through the tender process, which drew interest from New Zealand's leading firms in the construction sector.

Council has deliberately engaged construction professionals early in the project development to assist in the project design. This helps to achieve greater cost effectiveness and cost certainty during the construction phase of the project.

Mayor Reese was pleased that a local firm came out on top through this selection process. "We have real construction talent in our city and it's good to see a local firm competing and winning a tender in competition with major New Zealand (and international) firms."

"The combined bid with Downer highlights the benefits that partnerships can have, each leveraging off their respective expertise. Taking a partnership approach is highlighted in our Long Term Plan consultation document. Gibbons Construction has demonstrated an excellent understanding of our city and the steps required to get this important community facility re-opened."

Gibbons Construction is delighted to be involved in the project with Chief Operating



Officer Shane Trench calling it a project "of huge significance for the region". Trench notes "There are a number of challenges with this project which require specialist technical experience, as well as sufficient resources to complete the works in what is a relatively tight timeframe. Aligning ourselves with Downer ticks all those boxes and clearly the tender evaluation team agrees."

"Council are to be applauded for their approach of early contractor involvement for the project and we are chuffed that we, Gibbons/Downer, both significant local employers in our own right have been selected for Stage 1."

The Trafalgar Centre is scheduled to be reopened in February 2016.



Head out and enjoy the new Pipers Park track

Pipers Park is now home to a new walking and mountain bike track, opening the reserve up for everyone to enjoy.

In April, the reserve track, which runs between the top of Emano Street and Princes Drive was officially opened, providing a link between the two areas.

Victory Community Group and the Nelson Mountain Bike Club initiated the idea for the track, which was taken up by Nelson City Council who engaged Nelmac for the design and construction.

The construction of the new walking and mountain bike track wasn't without its challenges, particularly due to the steep terrain.

Historic slips, dense vegetation in places and drainage to accommodate natural springs and stormwater run-off all had to be taken into account.

Prior to construction of the track, the steep land was planted in pine trees. These were logged in 2010 and natives have been planted in their place, with voluntary help from local schools. Riparian planting was also carried out by Council and Nelmac staff following the discovery of native Kokopu during trail construction.

The Nelson College carpentry workshop built the bridge across the creek at the bottom of the Reserve with the timber donated by South Pine and made to existing Department of Conservation plans.

With support from the community, the project has been a great success.



Railway Reserve gets new mural

If you're heading along the Railway Reserve in Stoke, you might notice a new piece of artwork on Songer Street.

The new mural, created by Mikaere Gardiner as part of Project Beige which is celebrating New Zealand Rail throughout the country, represents an event which made headlines in the 1950s.

When the announcement was made to demolish the Nelson railway line in 1955 a group of Nelson women decided to stage a protest, sitting on the line knitting and chatting. The railway had run from 1876–1954, through Stoke from Nelson, along what is now the Stoke cycleway. They succeeded in delaying the

work for a week, until they were arrested and taken away. Demolition of the line had been completed by December 1956.

Among the protesters, who were led by former school teacher Ruth Page, was Sonja Davies who later went on to become the first woman vice-president of the Federation of Labour, and later a Labour MP.

The new mural was funded by the Creative Communities Local Funding Scheme.



Mobile app launched to get us out of our cars

A new mobile application has been launched to encourage and support active transport.

The Active Transport Toolkit aims to get more people out of their cars and onto their bikes, walking and taking the bus.

This frees up our roads and our city, helping to create a more vibrant and prosperous place to live and work.

This initial version of the app focuses on cycling and helping people to navigate safely through our city as well as providing a way they can report problems while out cycling.

App users can also record their cycle trips enabling the council to use this information to help focus their efforts when improving cycling infrastructure.

The application also has the ability to provide incentives for people to support local businesses that welcome cyclists.

The application is currently available for Android via Google Play (search for 'Active Transport Toolkit') or follow the link on the website activetransporttoolkit.com.

An iOS version will be available in the near future.



SPOTLIGHT ON STOKE

Community feedback is assisting the Nelson City Council to develop a concept design for a new community centre in Stoke that both meets the needs identified and is affordable.

In 2014 Council commenced a community engagement process, 'Spotlight on Stoke' with the goal of finding out what the Stoke community needs.

Consultation has included community surveys, stakeholder meetings and focus groups, capturing the needs of a broader Stoke community and stakeholders.

As a result, Council's 10 Year Plan provided for a new facility at Greenmeadows reserve, with \$5.6 million set aside in 2015/16 and 2016/17 to build the facility.

Further consultation on specific needs has involved a number of sports and community organisations. Submissions have also been received through the Long Term Plan 2015–25 consultation process.

Council would like to thank the community for its suggestions, with concept plans now being drafted by Jerram Tocker Barron Architects.

While the facility designs are now in development, Council would like

to highlight that there is still time for groups and/or individuals to provide further suggestions, until the end of May. Once completed, the concept plans will be presented to Council in July.

Anyone wishing to provide feedback can do so by contacting Gabrielle Thorpe, Community Partnership Adviser. Gabrielle can be contacted via email at gabrielle.thorpe@ncc.govt.nz or by phone 03 546 0305. Feedback needs to be received by midday 28th May 2015.

The Council recognises that the new facility is not a project in isolation and wider issues raised through public consultation over the last two years will be tackled in continued close partnership with the community.

Further projects include discussions with the community on the future of Stoke Memorial Hall; consultation, planning and physical works for a youth park; an upgrade of the Library and further improvements to parking and transport issues and planning for residential, commercial and employment growth through the Nelson Plan review.



activetransporttoolkit.com

Support where it's needed

A new initiative is underway, to help support and identify the needs of our older residents living in Community Housing.

The Council is working with Age Concern, as independent advocates, to connect with these people in their homes.

It is a completely voluntary initiative, with Age Concern touching base with people to ask whether they would like to be involved. They will then spend time with them, helping them to connect with other agencies if necessary.

Councillor Gaile Noonan says this new initiative is about ensuring the older community is cared for,

"It's an important way of ensuring we are assisting people to connect with other people and agencies who may be able to help on a long term basis. This is about identifying needs before they become a real issue."

Batteries – the risks and how to dispose of them safely

Nelson City Council is offering advice on the dangers of batteries and how to dispose of them safely.



The number and diversity of electrical and electronic products that use batteries has grown dramatically in the past few decades. Our homes contain many pieces of equipment that depend on batteries to operate such as portable computers, mobile phones, toys, and power tools.

Lead, mercury and cadmium found in some batteries can harm the environment if not disposed of correctly. Recycling or proper disposal of batteries can prevent these dangerous elements from entering the environment.

Rechargeable batteries can be particularly harmful to the environment and should be

recycled by being taken to your local Transfer Station.

The way you dispose of your batteries will depend on the type of battery you are using. You can find detailed information on the correct form of disposal on the Nelson City Council website.

There are some simple things you can do to reduce the environmental impact of batteries.

Use rechargeable batteries rather than single-use disposable batteries whenever possible. This reduces waste, saves energy, and over time will cost you less. Note that some rechargeable batteries are not suitable for some applications such as smoke alarms and emergency torches.

If you have to use disposable batteries, choose long-life brands.

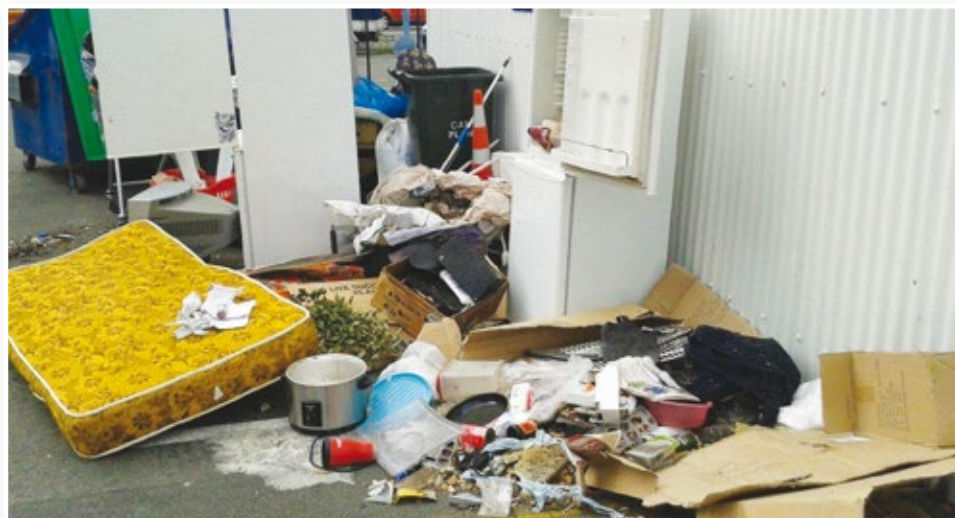
Plug appliances into the mains power supply as often as you can to extend the life of your battery.

Consider choosing products powered by alternative energy sources, such as solar-powered calculators or kinetic powered torches.

If your workplace uses significant volumes of batteries, check the Yellow Pages for specialist companies who can provide safe recycling and disposal services.

nelson.govt.nz

Search = batteries



Please don't dump your rubbish

The Salvation Army is asking people not to dump rubbish at their door, after an influx of fly-tipping.

There has been a spate of late night donations to the Nelson Family Store which have not been in a good, saleable condition, therefore requiring the charity to spend time and money disposing of the rubbish themselves.

The Salvation Army Nelson provides support to people in need, providing food, shelter, budgeting advice, social work and counselling.

The charity benefits from the donations of goods such as clothing, furniture, household items, toys, and garden equipment; anything that can have a second life with someone else.

The Family Store asks for good quality items that are able to be resold, yet a large number of rubbish items have been dropped off in recent months.

There has also been an increase in fly tipping: the dumping of rubbish after hours on the store's premises, as opposed to the charity's preference of receiving donations

during working hours.

The clean-up of this mess means less money is available to help people in need and is disheartening for those working hard to provide this community support.

The Nelson City Council has been working with the Salvation Army to find solutions to this growing problem.

There is also an issue of people uplifting donations when they are left after hours.

Increased signage as well as public education is the first step with plans to install security cameras to identify persistent offenders.

The charity is also reminding people of its pick-up service whereby donated goods can be collected at an arranged time by phoning the store.

The Salvation Army says it's important they honour the generosity of those donating goods by ensuring their donations serve those most in need.

Does winter give you the blues?

As temperatures start to fall, many of us are starting to put on extra layers of clothing in the morning, to help stay warm.

Just as we check that our winter gear is up to scratch, shoes that don't leak, socks are not full of holes, and the kids' polar fleece is in the wardrobe and not lost from last winter, our homes can also do with a pre winter check over. Over time, the effectiveness of insulation, the settings on your hot water cylinder and the efficiency of your heating can change.

This often happens un-noticed and this gradual deterioration over time reduces our home's performance and elevates our energy bills.

Did you know that the Council provides a great FREE service that's aimed at making your family home warmer, dryer and healthier! Richard Popenhagen is the Council's Eco Building Design Adviser. He is available to come to your home and offer free impartial advice on dealing with this issue and other ways to make your home more energy efficient.

He spends up to two hours with you, looking at your needs and making recommendations so that you can maximise the potential of your home.

These recommendations are a mixture of no cost, low cost and other solutions specific to your situation and needs. You don't need to be a homeowner; Richard's impartial advice is available to renters, landlords, building professionals and community groups. If you are thinking of building a new home, Richard can help you avoid some common mistakes.

With cold nights approaching and the winter chill about to settle in now is the ideal time to look at your home. Arrange a free consultation now! Take the first step and be on the way to a warmer drier and healthier home. Call Richard on 546 0251 or email richard.popenhagen@ncc.govt.nz.



Victory Primary School classrooms assisting with the landscape planting at the recently revamped Murphy Reserve playground.

Revamped playground for Victory

Murphy Reserve now has a rejuvenated playground for the community to enjoy.

Council aims to empower a happy, healthy community where people have access to necessary services and facilities, like playgrounds, and feel connected to each other and the city.

Redevelopment of the Murphy St playground in Victory began after discussions with the community.

Following this, Victory Primary School students were quick to put up their hand to help out with the landscape planting.

A planting day was held in April with two classrooms enthusiastically planting around 400 plants, before enjoying some play time on the new equipment.

Victory Primary School Teacher Melissa Corlett said the children enjoyed the day.

"It was a really neat afternoon and the playground has been packed every afternoon since. The children are very proud of their contribution."



Upgrading your footpaths

Council's extensive work to upgrade the city's footpaths is progressing well.

This financial year Council had \$500,000 set aside for footpath rehabilitation and improvement.

Half of that funding is set aside to work with the installation of Ultra Fast Broadband (UFB) and capitalise on the efficiencies gained when footpaths across the network are used for UFB channels.

In addition to this work a large number of minor "fixes" have been identified and remediated from a city wide audit carried out earlier this year, coupled with existing council knowledge of defects. This work involves removing trip hazards such

as ruts, bumps or cracks.

Council has also identified a number of sites needing more significant improvement and much of the years work has now been completed including sites at Trafalgar Square East, Sussex Street footpath, Manaka Street footpath, tactile paver installation and footpath reshape at Songer Street pedestrian refuge, and most recently Shelbourne Street (pictured above).

Sections of Bisley Avenue and Upper Trafalgar Street will also see marked improvements before the start of July.

Golden Day Out

Natureland is Nelson's zoo and wildlife conservation centre where you can get up close and personal to some unique New Zealand natives like Tuatara and Kea.

Hang with the monkeys and get hands on with a range of interesting domestic animals.

Natureland Wildlife Trust is offering a special day out for Gold Card holders on Wednesday 20 May at 10am.

There will be special keeper talks, animal encounters and morning tea along with a clarinet performance. Entry price \$10 with 100 tickets available so bookings are essential. Contact Mike on 03 548 6166 or mike@natureland.nz.

NATURELAND WILDLIFE TRUST PRESENTS GOLDEN DAY OUT

A special day at Natureland for Gold Card holders



Featuring:
A clarinet performance by Soloist Harim Oh,
Special keeper talks,
Animal encounters,
and
Morning tea included.

Limited to 100 tickets, bookings essential.

Time: 10.00A.M

Date: Wednesday 20th May

Cost: \$10.00

RSVP: Mike @ 03-5486166
mike@natureland.nz



Wet or green wood makes more smoke and less heat, so if we burn dry wood from a GOOD WOOD supplier our homes will be warmer, the fire will be cheaper to run and the air quality will be healthier for everyone.

Council approved GOOD WOOD suppliers will ensure you get dry wood and can give you good advice on storing wood for the following winter.

Check out the full list of Good Wood suppliers online at: nelson.govt.nz.

 Nelson City Council
te kaunihera o whakatū

What you need to know about the Urban Environments Bylaw

Bylaws are rules made by the Council that affect the way we live, work and play in certain areas and aim to reduce nuisance or offensive behaviour.

The Urban Environments Bylaw, which will take effect from 2 June 2015, covers a range of urban issues, including rules about chickens, street numbers, busking, fundraising, begging in public places and alcohol-free areas.

Copies of the full bylaw are available at the Customer Service Centre and:

nelson.govt.nz

Search = urban environments bylaw

Please note information on the 'Control of Alcohol in Public Places' aspect of the bylaw will be provided in more detail in the next issue of Live Nelson.



Keeping of animals

A general provision applying to the keeping of all stock, poultry and pets in the city requires animals to be kept in clean and sanitary conditions. Noise or odours associated with the animals must, as far as practicable, be confined within the property.

Council has retained the existing provisions related to keeping animals in urban areas, not allowing roosters but allowing up to 12 poultry on a property (keeping more requires a permit). Keeping of stock animals in the urban area also requires a permit.

A new provision requires that poultry houses must be at least five metres from dwellings on neighbouring properties. This excludes garages and other buildings used for storage.

The bylaw also includes a new provision related to confinement and fencing of stock animals (throughout Nelson, including rural areas) to avoid traffic hazards associated with wandering stock.

The limit on rabbit numbers (previously three) has been removed and there are no specific rules about cat numbers. However, the Council encourages responsible ownership of all animals. It provides a subsidy to the SPCA to assist with the costs of neutering and spaying cats.

Feral cats are managed separately, under the Nelson Tasman Regional Pest Management Strategy.



Trading in Public Places

A permit is still required to do any of the following in a public place:

- Operate as an itinerant trader
- Run a mobile shop
- Provide a commercial service
- Solicit donations
- Sell lottery tickets
- Place an advertisement.

A permit is also required to:

- Place a retail display (a display of goods for sale) in a designated commercial area (such as an inner city street)

- Write, paint, chalk, spray or otherwise mark any street, footpath, tree or structure in a public place.

As in the previous bylaw, begging is not permitted in public places.

Buskers can now perform in the same place for up to one hour (up from half an hour) within any two hour period. Anyone wishing to busk in a public place must first provide their name and contact details to the Council and pick up a copy of the rules related to this activity.



A new bylaw provision has been added which does not allow people to offer to wash vehicles in public places where this poses a traffic hazard (such as window washing while cars are stopped at intersections).

Urban Amenity

Council has retained its provisions related to use of caravans on residential properties. These limit use of a caravan (associated with a residential house) for sleeping purposes to 50 days per year. The occupants of the caravan must use the toilet and cooking facilities of the residential unit. The caravan must not be parked in the front yard (as defined in the Nelson Resource Management Plan), or nearer than 1.5 metres to any boundary.

Rules related to slaughter of animals and storage of carcasses still apply. It continues to be an offence to deposit household and trade refuse, and hazardous material, in public rubbish bins.

Barbed or razor wire on fences, and electric fences, are not permitted on the boundary of land which is adjacent to any street, reserve or other public place, where the fence is in a position or at a height accessible to the public. This is an expansion of the previous bylaw provision, which only referred to barbed wire.

The existing requirement to display the street number of a building in a way that is visible from the street has been retained to make it easy for people to find their way around the city.



Reserves

All aspects of the previous reserves bylaw provisions have been retained.

The only reserves where golf can be practised or played is on the Waahi Taakaro Golf Course and the designated area in Neale Park. Permits are required to carry out the following activities in Council reserves:

- Drive a vehicle faster than 20km/hour
- Use chainsaws or other tree

felling implements

- Take rocks, minerals and sand
- Possess firearms
- Kill animals, including pest animals.
- Plant, spray or remove vegetation
- Graze livestock
- Land recreational motorised aircraft
- Place or erect memorials, including plaques.

Some exemptions apply to these requirements.

FROM THE COUNCIL TABLE

Bringing you the results of what has been discussed and decided at the Council table

Councillor's Comment – Mike Ward



Nelson is one of the most beautiful and abundant cities on the planet so I can understand why some might ask why change anything? But the latest climate change predictions, based on accelerating sea ice melt, threaten, in addition to more extreme weather, a two metre sea level rise

within the next forty to fifty years, with worse to follow unless we dramatically reduce our carbon emissions.

What difference you may ask could a city of 45,000 possibly make on a planet with seven

billion and why should we bother when hardly anyone else seems to care? Call me ambitious but I rather fancy the idea of my lovely city being one of the role models that the rest of the world looks to, to find out how to live sustainably and well. And since an extra two metres at high tide would inundate much of Nelson, we have every reason to make an effort. We also have our quite remarkable Nelson 2060 blueprint to guide us.

As Council grapples with measures in the Long Term Plan to protect against the extreme weather, there is much that the rest of us can do to minimise future threats.

nel.so/n/cac



MEETINGS

The following meetings of the Nelson City Council have been scheduled:

Planning and Regulatory Committee
9am 14 May

Council meeting – to deliberate on submissions to the Long Term Plan
9am 19 May

Council meeting – to deliberate on submissions to the Long Term Plan (if required)
9am 20–21 May

Community Services Committee
9am 22 May

Governance Committee
9am 28 May

Hearing for exemptions to Fencing of Swimming Pools Act
1.30pm 28 May

Meeting Changes

Council meeting at the conclusion of the Planning and Regulatory Committee 14 May

This meeting has been cancelled. The items scheduled for this meeting have been deferred.

Other Meetings

Nelson Youth Council
1pm 15 May

Notes:

- 1: Unless otherwise shown, the meetings will be held in the Council Chamber, Civic House, Trafalgar Street, Nelson.
- 2: A public forum is held during the initial period of the Committee/Council meeting. Anyone wishing to speak at this public forum is asked to give prior advice to an Administration Adviser on 546 0200.
- 3: Agendas will be available for perusal at the Customer Service Centre in Civic House, or at Nelson Public Libraries, two days prior to the meeting.
- 4: Agendas and minutes for Council meetings can be viewed on Council's website nelson.govt.nz.

Heritage Week a great success



7 year old Carter Bisdee enjoying an ENZA apple, donated by Nelson Turners and Growers, at The Adventures of Milly Molar & Freddy Fang.

Nelson's Heritage Week 2015, "Health and Medicine" has wrapped up. Nelson City Council thanks all the many supporters and volunteers who took part in Heritage Week this year. It is the sixth year it has been running and offers a chance to celebrate Nelson's stories, people and places, with the help of community run events, and donations of time and products.

Celebrating our heritage brings us closer together, and encourages greater appreciation of our built and natural environment that is uniquely ours.

66 entries were received for the Maitai Quiz and feedback has been very positive.

Rachel Kearney: "The children really enjoyed doing the quiz and it was a great family activity."

Cindy Mosey: "As our kids were on bikes it was good to do on the walkway. The content was good and age appropriate."

Mrs Thomas: "We enjoyed doing the quiz as we were out on our bikes and spent most of the morning as a family doing clues."

Winners:

- Family State Cinema Pass (first correct entry): William Kearney (age 6)
- Swim passes to Riverside Pool: Logan Mosey Reid; Nicola Mercer; Hamish Hurst; Hannah Thomas; Gemma Hunt
- Winners of passes to New Zealand Classic motorcycles: Gary Robertson and Matt Holland.

From the Youth Council By Katie Shaw and Emily Thomas

With the Youth Councillors well and truly settled in their roles as the voice of Nelson youth, we are continuing to involve ourselves in a variety of community projects.

The build up to Youth Week has us busy planning our Youth Quiz on 28 May at the Nelson College for Girls Hall.

In the school holidays a small group of councillors met with Janet Taylor from the Alcohol Accord Project where they provided a youth perspective on alcohol related issues facing our community.

Another few councillors have volunteered

to work with Axel de Maupeou (Nelson City Council Team Leader Festivals) on an exciting upcoming public art installation in promotion of the Nelson Arts Festival.

Other members have continued to attend Council meetings and Committee meetings, finding these to be valuable experiences. Our submission to the Council's Long Term Plan has been both a challenging and thought-

provoking process. We plan to speak to our submission at the Long Term Plan hearings this month with the support of surveys completed by Nelson youth.

For more information on what the Nelson Youth Council is doing for young people within our community, be sure to like our Facebook page.

Be Bright!



That's the message for cyclists from Bike Wise, NZ Police, and Nelson City Council.

Nelson is one of twelve cities around New Zealand focused on reducing cycling accidents and increasing awareness of cyclist safety through a campaign named 'Be Bright.'

Cyclists are being reminded to light up their bikes and wear high-visibility clothing to help keep them safe on the road.

Cyclists' visibility to other road users, especially during times of low light, is an essential part of cyclists' safety.

Bike Wise and the NZ Police are promoting the use of lights and high visibility clothing in order to reduce risks to cyclists during low-light periods at dawn and dusk or in poor weather.

Bike Wise is one of the New Zealand Transport Agency's tools for the promotion of safer cycling under the national 'Safer Journeys' strategy.

Nelson City's 2015 Be Bright campaign involves:

- Checkpoints at key locations where Police will assess reflective gear and lights. Those that have adequate lights will be rewarded with bells and puncture repair kits. Cyclists that do not have adequate lights will be given some assistance while stocks last.
- Roving cycle ambassadors who will stop cyclists without lights and offer to fit lights on their bikes at no cost.
- Cycling ambassadors attending major cycling events and giving out lights and high-visibility cycling clothing.
- Don't forget you can also get a free bike bell from Council's Customer Service Centre to avoid startling other shared pathway users.

Cyclists are being reminded to use their bell to alert walkers and joggers to avoid frightening them when passing.

Rating Information Database

Nelson City Council advises that the Council's Rating Information Database is available for inspection (without fee) at the Customer Service Centre, Civic House, 110 Trafalgar Street, Nelson during ordinary office hours (Monday, Tuesday, Wednesday and Friday 8:30am – 5pm and Thursday 9am to 5pm).

The Rating Information Database can also be accessed via the Council's website nelson.govt.nz. Look up rates online and then enter the property street address to view the current year's rating information. Then click on (Next Year – 2015/16) to view the properties rating charges and information for the 2015/16 rating year.

The Rating Information Database contains a record of all information required for the setting and assessing of rates and informing ratepayers.

nelson.govt.nz Search = rates

Broadgreen House Temporary Closure

Strengthening work is currently taking place at Broadgreen House, continuing for approximately two weeks.

In December 2011, the cellar was badly affected by flooding, and some of the foundations were undermined.

After the event, a sump was installed and shoring up work was completed to secure the cellar.

This additional remedial work will ensure that if such an event happened again the house will not suffer any further damage.

Nelson City Council thanks the public for its patience and understanding.



What's on – at a Council venue near you



Trafalgar Park

Super Rugby – Crusaders vs Hurricanes:
29 May, gates open 4.15pm, curtain
raiser 4.45pm, kick off 7.35pm

Nelson Public Libraries

Elma Turner Library

BookChat: Second Tuesday of each
month, 10.30am

BookChat via Twitter: Last Tuesday of the
month, 9pm

For Parents 'Learning at Your Library'
fortnightly Tuesday mornings, 9.15–10am

Small Time at the Library: Stories, songs
and rhyme incorporating movement for
0–2yr olds, Wednesdays, 10.30–11.30am
(term time only)

Story Time at the Library: Stories for
2–4yr olds and their parents, Thursdays
2pm (term time only)

Crafternoons: Craft sessions for 12–15yr
olds, weekly on Wednesdays, 4–5pm

Coding Club: Free basic software training
for 9–12yr olds, weekly on Thursdays,
4–5pm

Nelson Public Libraries Commemorate
World War One: Until 30 May

- Researching WWI: 26 May 12–1pm
- Jennifer Baumfield talks about her
book, 'Nelson 1914': 17 May, 2pm
- WW1 Archive film showing: 19 May
12–1pm
- WW1 Poems from Nelson Poetry
Group: 15 May, 12–1pm

NZ Music Month Lunchtime Concerts;

- Steve Mitchell entertains with voice
and guitar: 14 May, 12.30pm
- Julie Saraswati entertains with harp
and voice: 16 May, 11am
- Paul Gilmore and friends, Gypsy
Guitars: 22 May, 12.30pm
- Roger Lusby, folk balladeer: 26 May,
12.30pm
- Sophie Ricketts and Don Manunui
performance: 30 May, 12.30pm

Stoke Library

BookChat: Third Wednesday of each
month, 5pm

Story Time at the Library: Stories
for 2–4yr olds and their parents,
Wednesdays, 10.30am (term time only)

Nelson Public Libraries Commemorate
World War One: Until 30 May

- Display of Stoke's WWI heroes
- NZ Music Month Lunchtime Concerts:
- Julie Saraswati entertains with harp
and voice: 20 May, 1pm

Museums and Galleries

Nelson Provincial Museum

Weekdays; 10–5pm, weekends and
public holidays; 10–4.30pm

1915 – The End of Innocence, WWI – Their
Stories, Our History: Until April 2016

A Pandemonium of Parrots: Until 21 June
Gallipoli – In Search of a Family Story:
Until 23 August

CHECK OUT

Nelson Libraries celebrate NZ Music Month – May

May is New Zealand Music month and every year the Nelson Libraries celebrate New Zealand music and musicians by offering free lunchtime concerts. There are local performers offering everything from voice and harp at the Stoke library to folk ballads and classic acoustic covers at the Elma Turner Library. See the lineup at itson.co.nz