

## WHY DOES THE RULE EXIST?

### DELAWARE (WAKAPUAKA) ESTUARY ECOSYSTEM

Delaware (Wakapuaka) Estuary has significant ecological values and is an important spawning area for fish.

The Inlet's seagrass and cockle beds support a number of commercial and recreational species of fish, particularly in their juvenile stages.

Loss of, or damage to, this important estuary habitat is likely to reduce the variety and number of juvenile fish in the area. Damage to the estuary will also impact on species of shorebird such as the rare banded rail, variable oyster catcher and occasional visitors such as the royal spoonbill.

The rule is intended to ensure the sustainability of local fish populations, and the conservation of this beautiful natural area and its flora and fauna, by preventing damage and disturbance to the plants and animals that live here.

## HERITAGE AND CULTURAL VALUES

Delaware (Wakapuaka) Bay is of deep historic and cultural significance.

The area from Delaware Bay to Glenduan became a taiāpure (traditional fishery reserve) in 2002, established under the Fisheries Act 1993, and is managed by a committee of iwi, community and marine group representatives.

Historically, the Bay is famous for Hūria Mātenga's rescue of the crew of the Delaware, which ran onto rocks at Wakapuaka in September 1863. Hūria first swam into the raging sea to pick up a lead thrown by the ship's captain, and then entered the surf again to help the crew ashore. Also helping with the rescue were her husband Hemi and three other men. All were saved and Hūria Mātenga became a national heroine.



# DELAWARE (WAKAPUAKA) ESTUARY

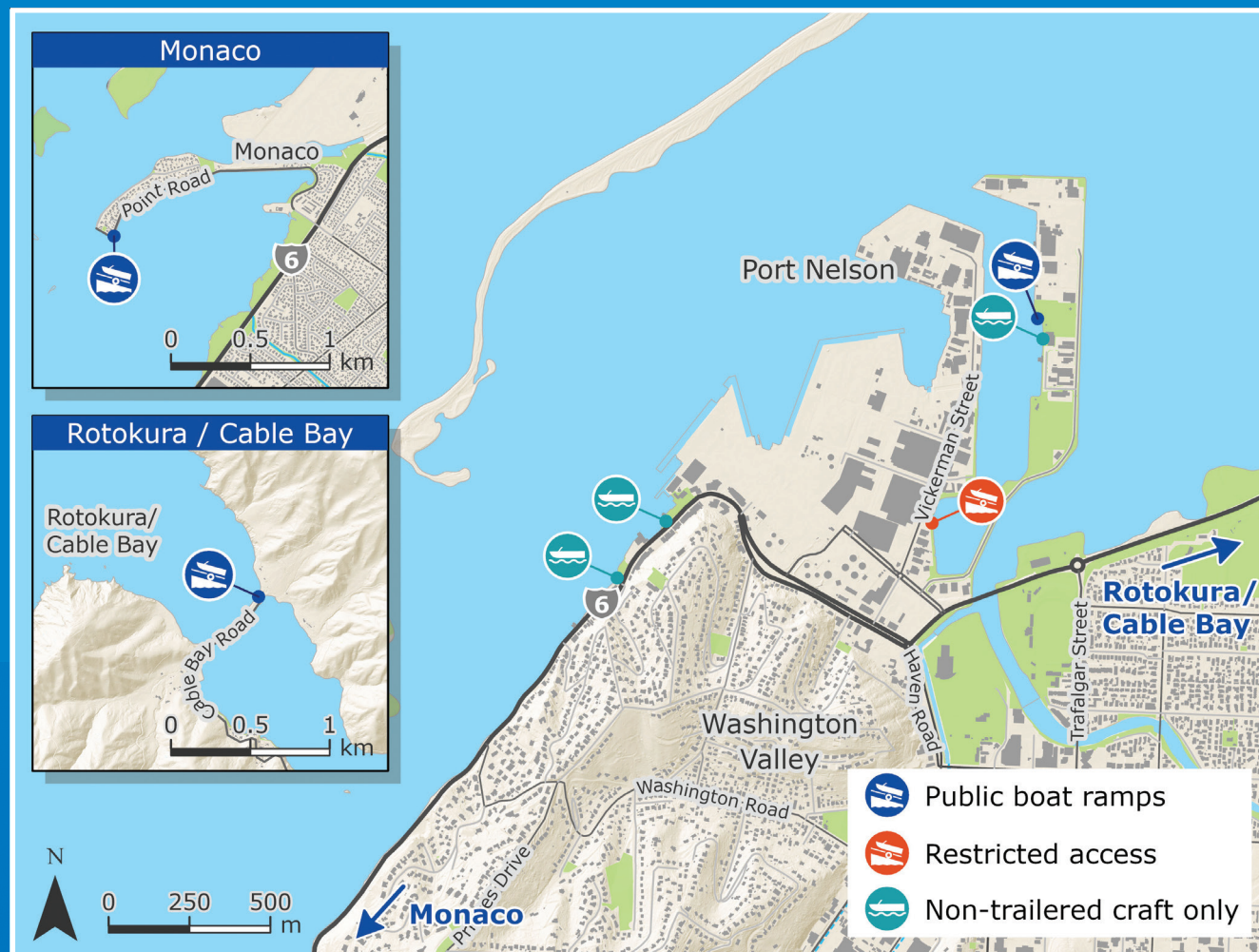
## NELSON RESOURCE MANAGEMENT PLAN RULES







## AUTHORISED BOAT LAUNCHING RAMPS



## THE NELSON RESOURCE MANAGEMENT PLAN RULE

Driving vehicles on the Delaware (Wakapuaka) Estuary, and disturbance of the foreshore or seabed by vehicles, is not permitted by the Nelson Resource Management Plan (NRMP).

The launching or retrieving of recreational or commercial vessels is allowed at designated launching ramps. The main authorised boat launching ramps in the Nelson region are Monaco, the Nelson Marina and Cable Bay. The safest all-weather launch site is the slipway at Nelson Marina.

Breaching rules can result in enforcement action from the Council that includes warnings, fines and abatement notices.

Council appreciates your support by adhering to this rule and helping to protect this important estuary.