

Approvals:
 This plan renders the boundary capable of identification under Clause 14 of the Resource Management (National Environmental Standards Relating to Certain Air Pollutants, Dioxins, and Other Toxics) Regulations 2004 Approved by Land Information New Zealand

NOTES:
 Where a boundary is shown along a river or road it follows the centre line of the physical river or legal road unless shown otherwise.

For full descriptions of adjoining sections refer to plans shown.
 Cadastral pattern and appellations correct at 29 June 2005.

AIRSHED DESCRIPTION:
 Nelson South incorporates the Washington Valley, Bishopdale and Nelson South / Toi Toi street areas. Nelson South has been Nelson's reference site since 2001 and has frequently exceeded the PM10 standard during winter. The emissions in the Nelson South airshed are predominantly from domestic heating, with a few large industrial discharges.

Nelson South is an elongated basin approximately 2.5 km long and 1.5 km wide. It has a north-east orientation and is surrounded by steep hills with an elevation between 80 and 200 metres. Hills along the north-west boundary separate the airshed from the coast. The basin partially opens out to the Nelson City airshed to the north-east, but is physically separated from the Tahunanui-Stoke airshed by an 80 metre high saddle.

The meteorology of the area is characterised by cold stable conditions during winter, and emissions in this area tend to be confined to the basin.

TERRITORIAL AUTHORITY :
 NELSON CITY COUNCIL
 LAND DISTRICT: NELSON

NELSON CITY COUNCIL
AIR SHED A : NELSON SOUTH

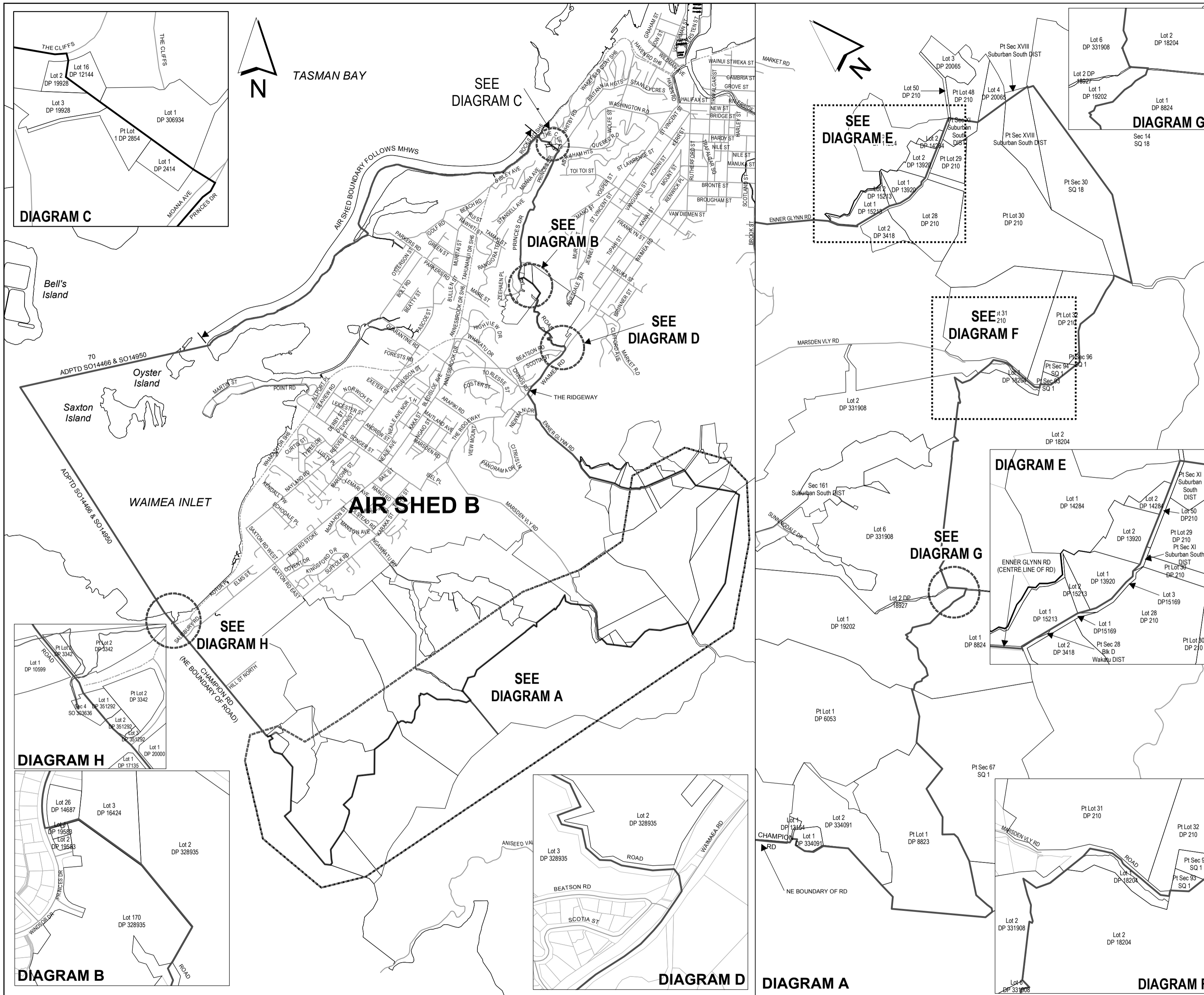
Compiled by Nelson City Council
 Scale : 1:15,000 Date June 2005

Approved as to Survey by Land Information NZ on

Deposited by Land Information NZ on

File
 Received
 Instructions

SO 356467



Approvals:
 This plan renders the boundary capable of identification under Clause 14 of the Resource Management (National Environmental Standards Relating to Certain Air Pollutants, Dioxins, and Other Toxics) Regulations 2004 Approved by Land Information New Zealand

NOTES:
 Where a boundary is shown along a river or road it follows the centre line of the physical river or legal road unless shown otherwise.
 All seaward boundaries follow MHWL but cross the mouth of all rivers, streams, inlets and estuaries unless shown otherwise.
 For full descriptions of adjoining sections refer to plans shown.
 Cadastral pattern and appellations correct at 29 June 2005.

AIRSHED DESCRIPTION:
 The Tahunanui - Stoke airshed is a contiguous area separated by State Highway 6, extending approximately 7 kilometres south-west from Tahunanui Beach to the Nelson City Council/Tasman District Council boundary.
 The Tahunanui area of the airshed has a high proportion of industrial emissions, while Stoke comprises mainly residential housing interspersed with industrial sites.
 Air quality monitoring has shown that PM10 levels in Tahunanui are slightly higher than in Stoke, however there is likely to be transfer of pollutants between the two areas, and their geographical features are considered similar enough to warrant classification as a single airshed.
 The Tahunanui-Stoke airshed is characterised by its flat landscape extending 1 - 2 kilometres from the eastern hills to the coast. The airshed is physically separated from Nelson South and Nelson City airsheds, and the climate is characterised by cold stable conditions during winter. However the airshed's coastal aspect means it has a greater coastal influence than Nelson South.

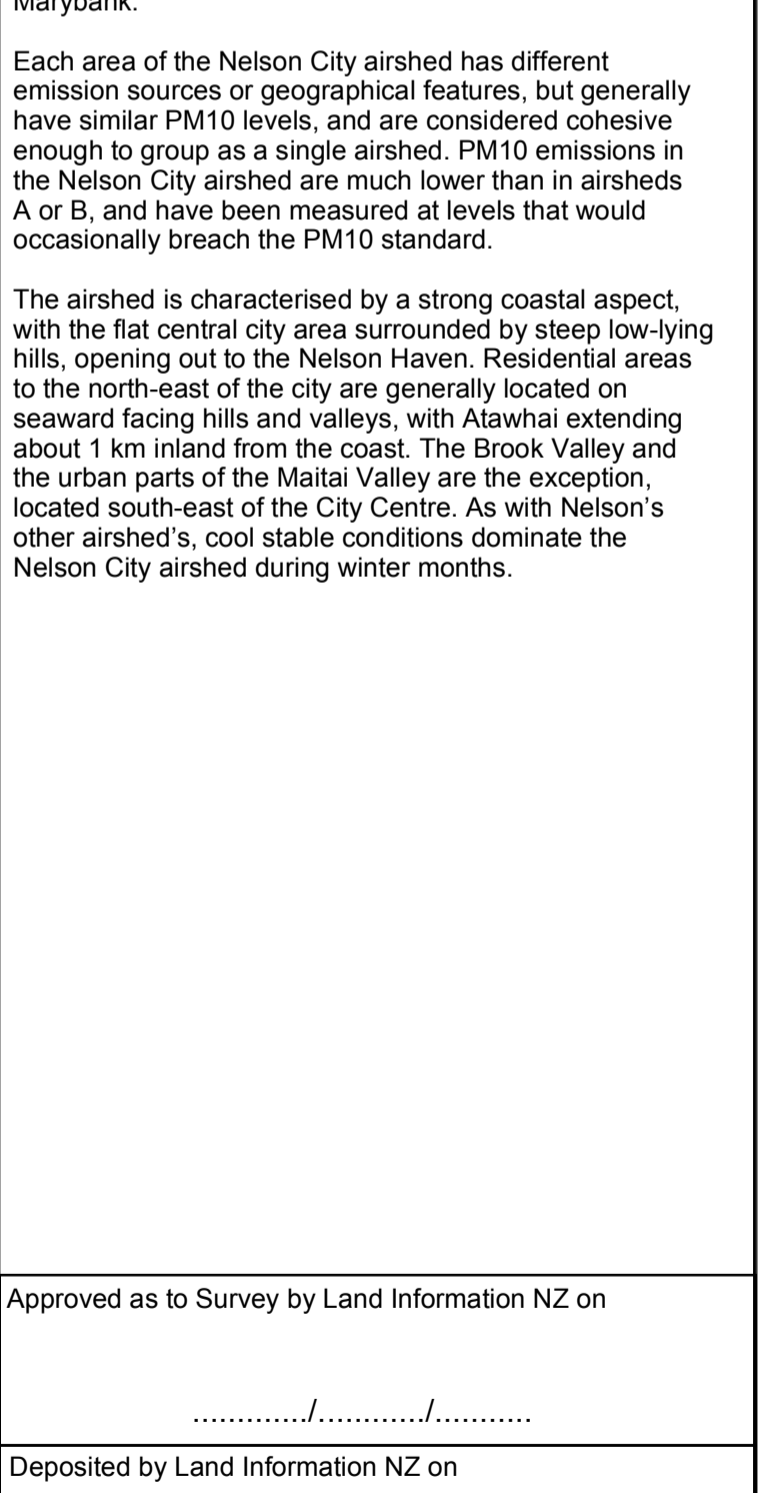
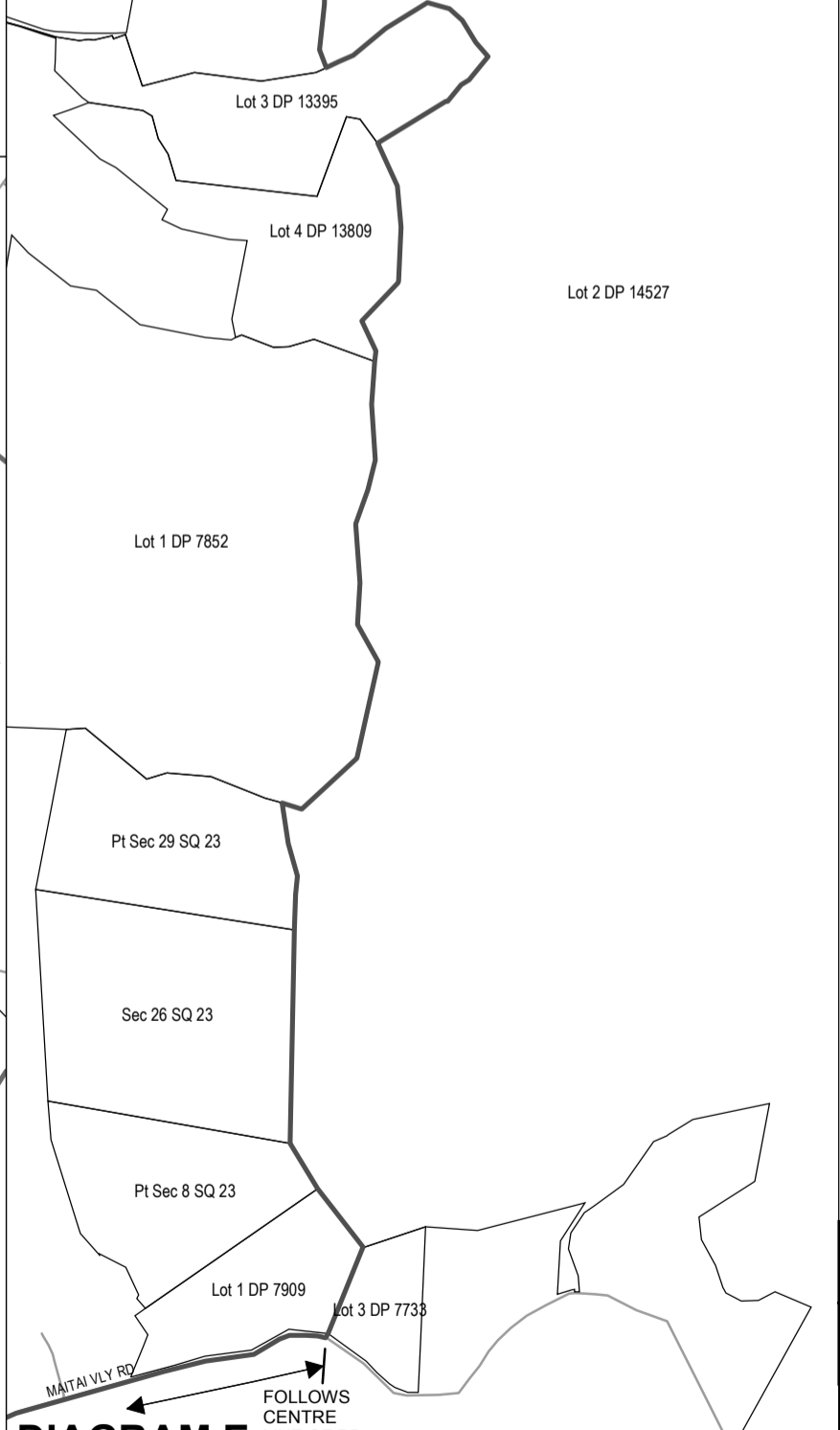
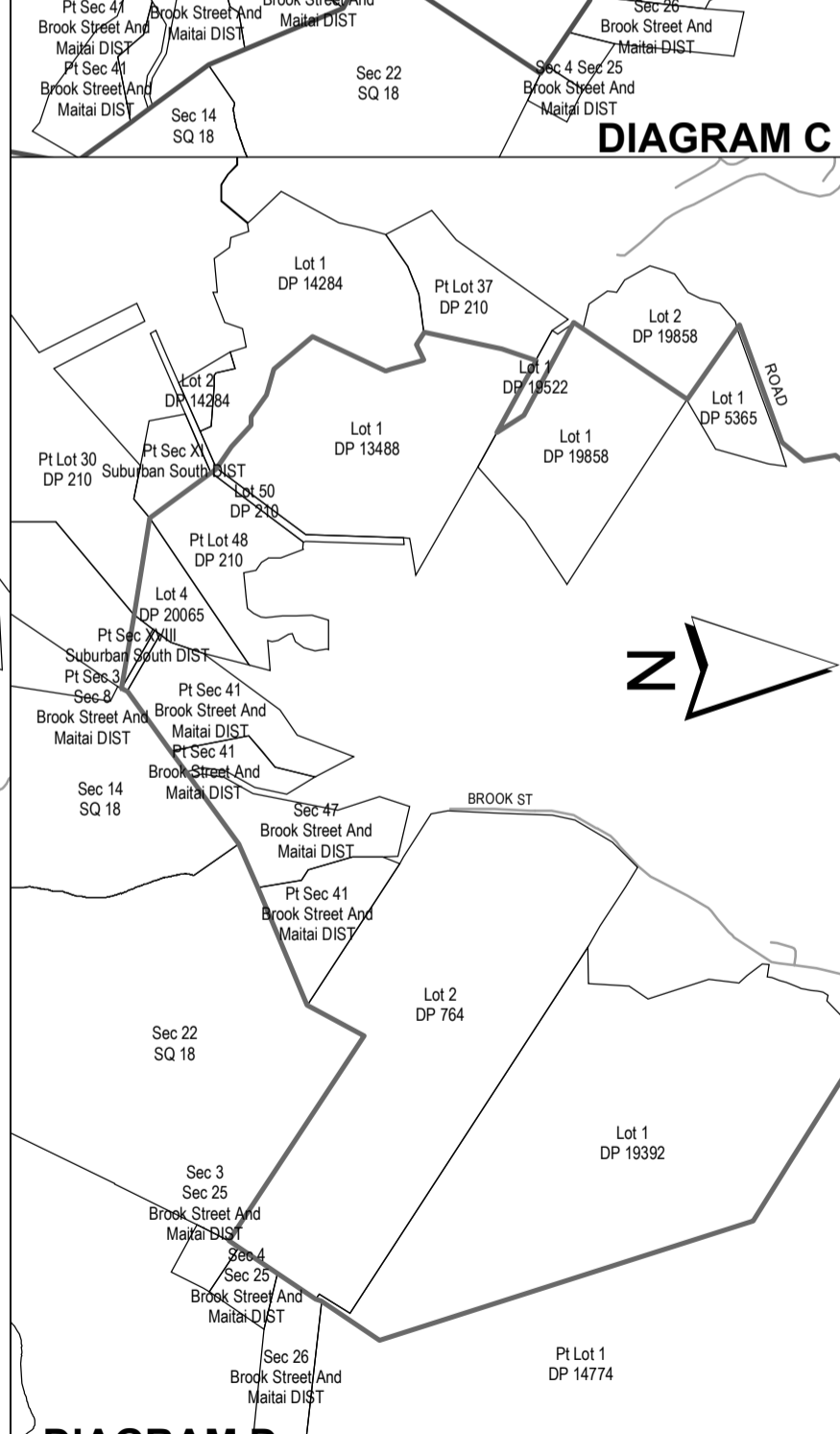
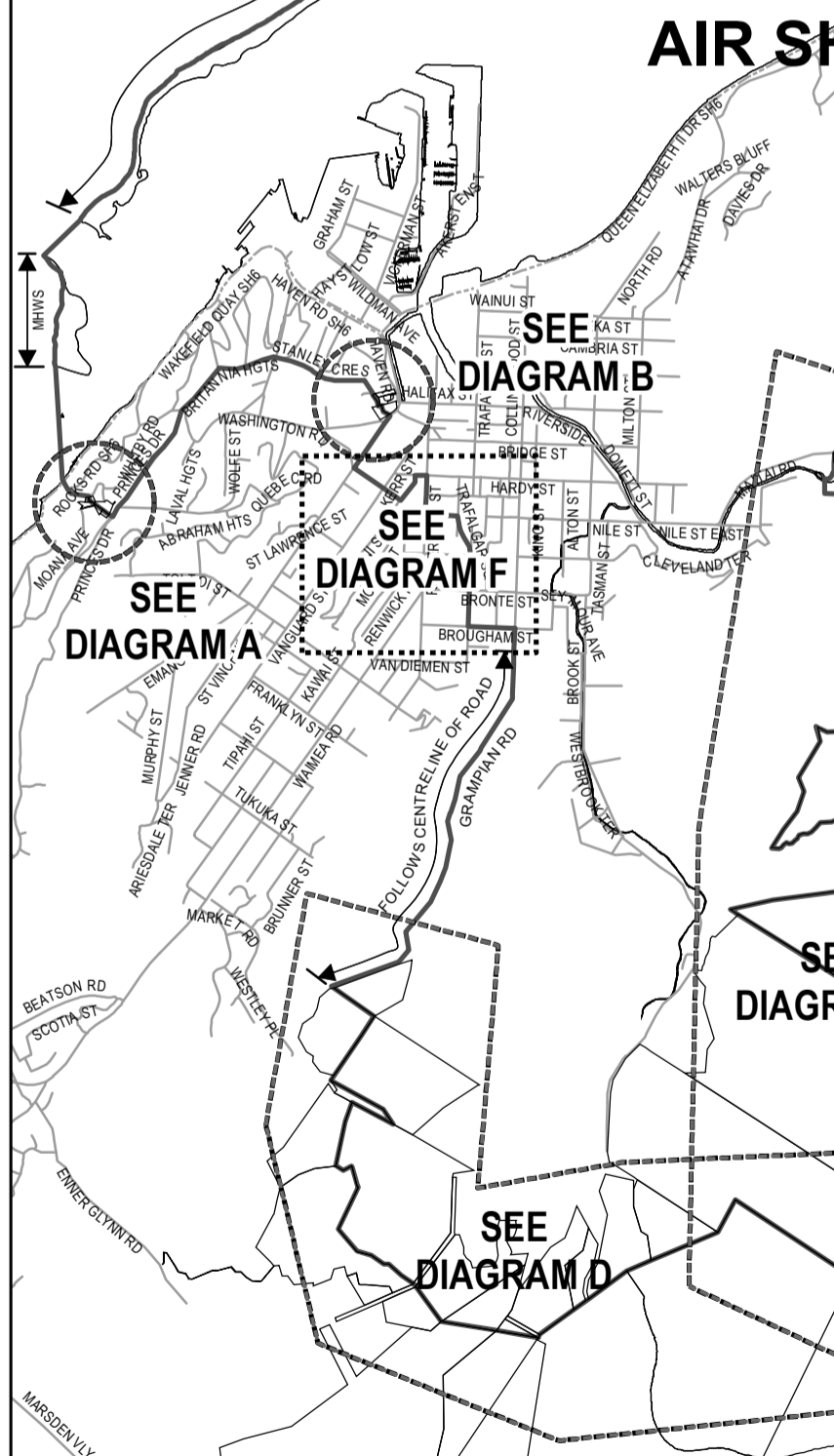
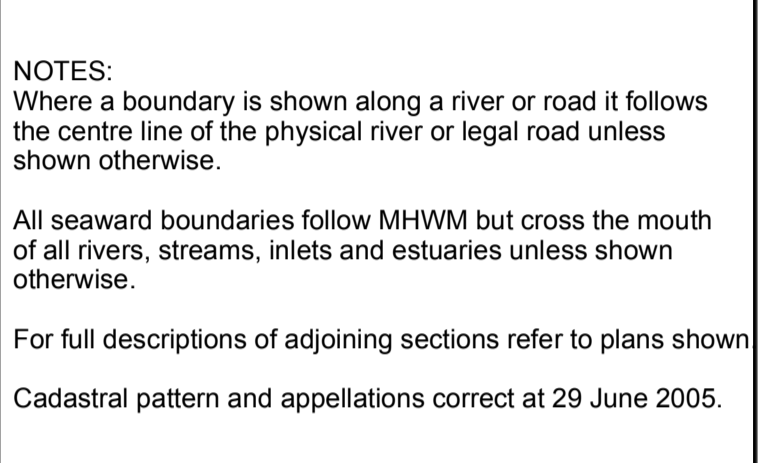
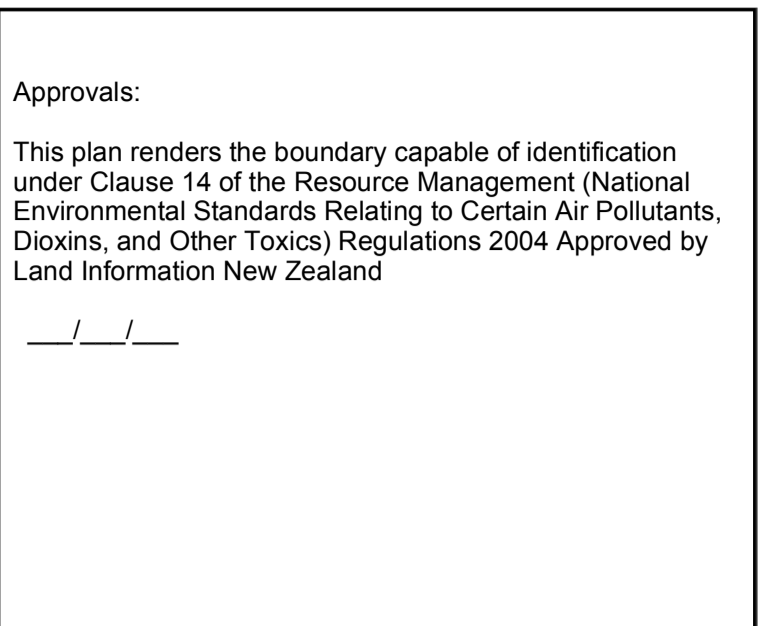
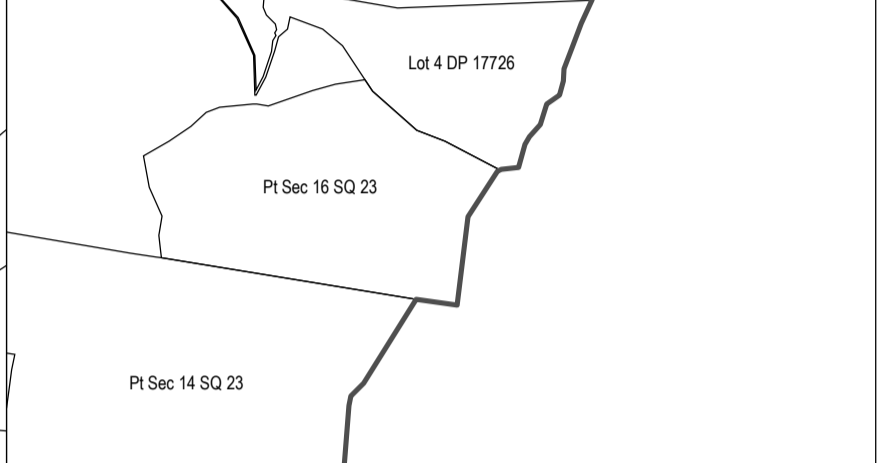
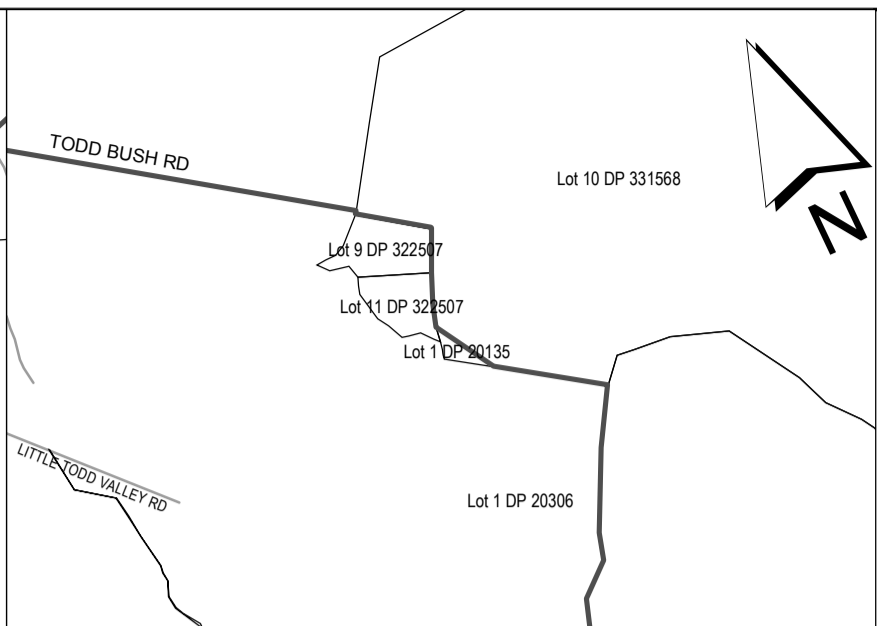
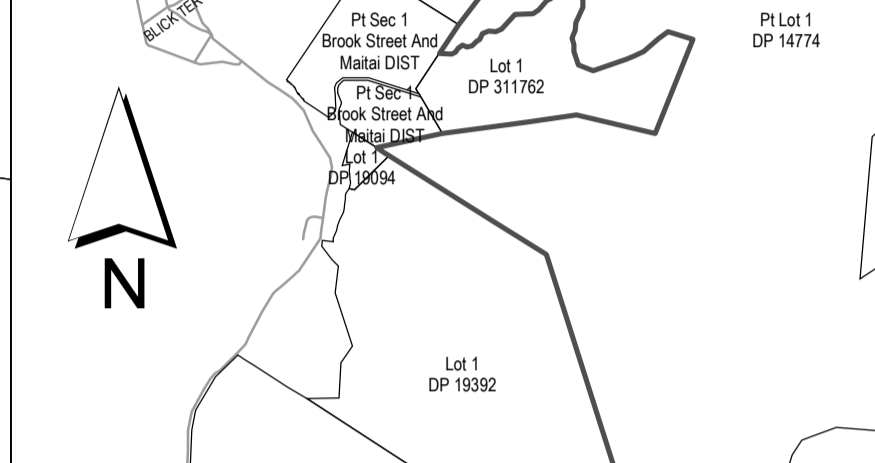
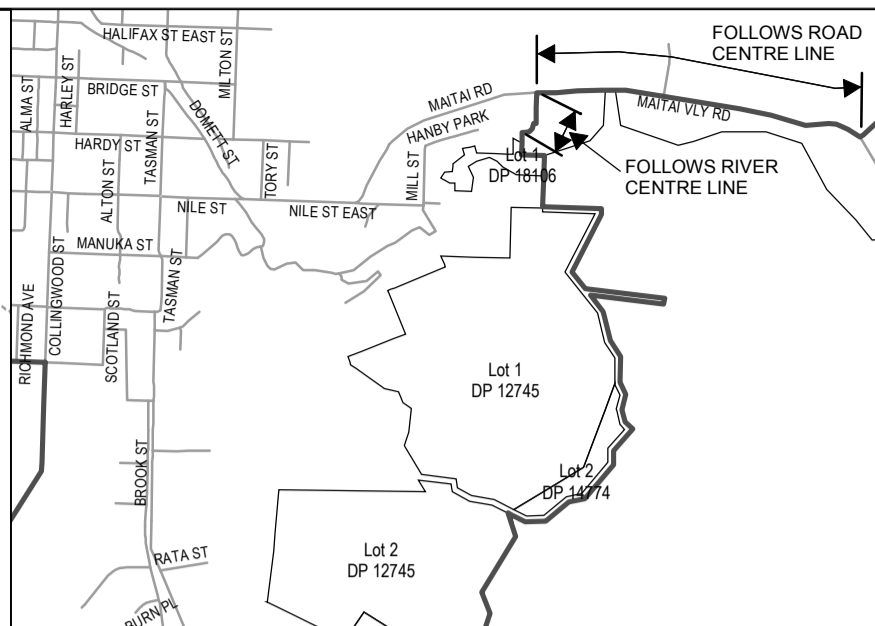
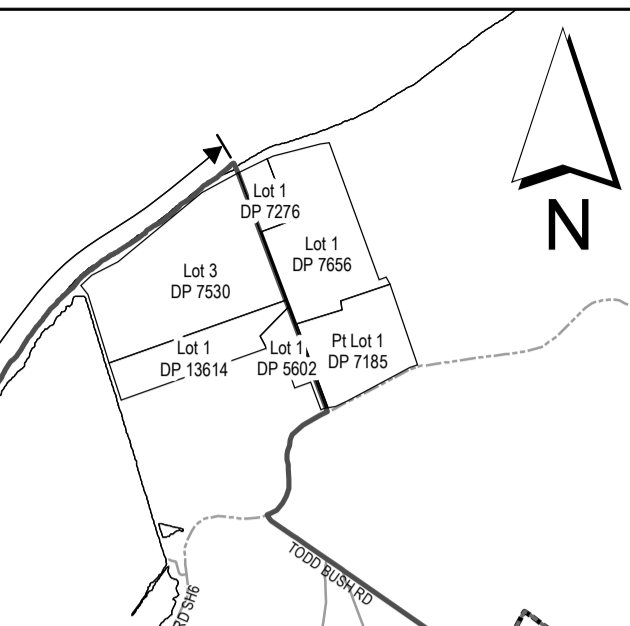
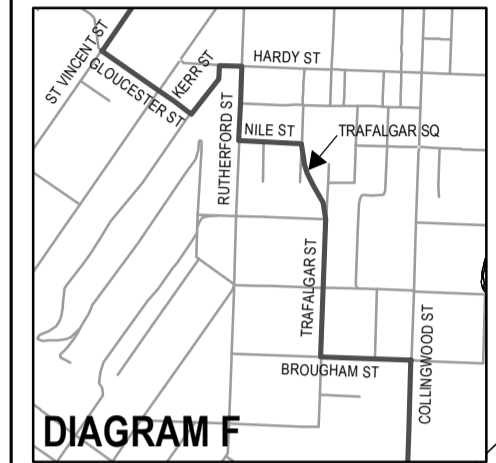
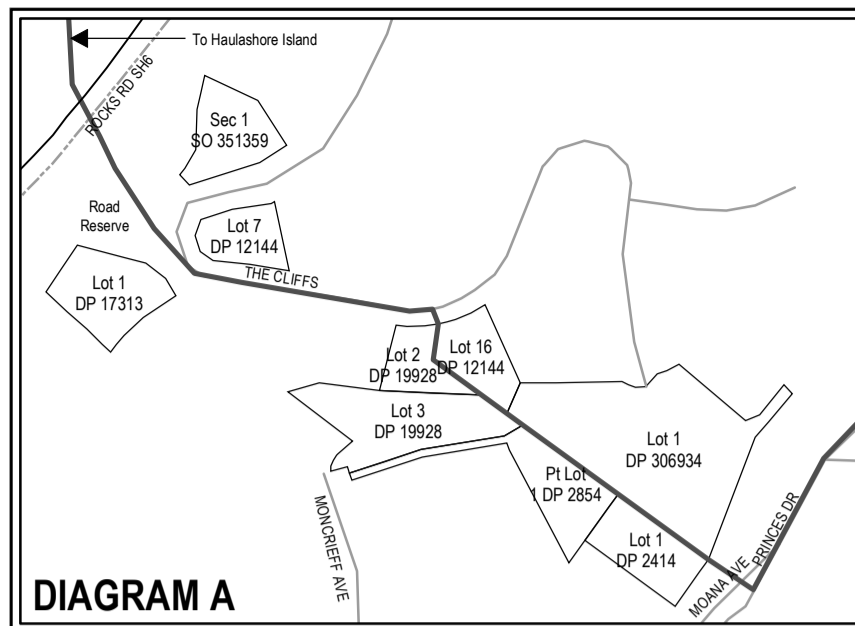
Approved as to Survey by Land Information NZ on
/...../.....
 Deposited by Land Information NZ on
/...../.....

TERRITORIAL AUTHORITY :
 NELSON CITY COUNCIL
 LAND DISTRICT: NELSON

NELSON CITY COUNCIL
AIR SHED B : TAHUNANUI - STOKE

Compiled by Nelson City Council
 Scale : 1:35,000 Date June 2005

File Received Instructions
SO 356468



Approvals:
 This plan renders the boundary capable of identification under Clause 14 of the Resource Management (National Environmental Standards Relating to Certain Air Pollutants, Dioxins, and Other Toxics) Regulations 2004 Approved by Land Information New Zealand

NOTES:
 Where a boundary is shown along a river or road it follows the centre line of the physical river or legal road unless shown otherwise.

All seaward boundaries follow MHWM but cross the mouth of all rivers, streams, inlets and estuaries unless shown otherwise.

For full descriptions of adjoining sections refer to plans shown
 Cadastral pattern and appellations correct at 29 June 2005.

AIRSHED DESCRIPTION:
 The Nelson City airshed incorporates the City Centre, Port Nelson, The Wood, The Brook Valley, urban parts of the Maitai Valley, and extends to the north east of the City Centre, incorporating Brooklands, Atawhai and Marybank.

Each area of the Nelson City airshed has different emission sources or geographical features, but generally have similar PM10 levels, and are considered cohesive enough to group as a single airshed. PM10 emissions in the Nelson City airshed are much lower than in airsheds A or B, and have been measured at levels that would occasionally breach the PM10 standard.

The airshed is characterised by a strong coastal aspect, with the flat central city area surrounded by steep low-lying hills, opening out to the Nelson Haven. Residential areas to the north-east of the city are generally located on seaward facing hills and valleys, with Atawhai extending about 1 km inland from the coast. The Brook Valley and the urban parts of the Maitai Valley are the exception, located south-east of the City Centre. As with Nelson's other airshed's, cool stable conditions dominate the Nelson City airshed during winter months.

Approved as to Survey by Land Information NZ on

Deposited by Land Information NZ on

TERRITORIAL AUTHORITY :
 NELSON CITY COUNCIL
 LAND DISTRICT: NELSON

NELSON CITY COUNCIL
AIR SHED C : NELSON CITY

Compiled by Nelson City Council
 Scale : 1:40,000 Date June 2005

File
 Received
 Instructions

SO 356471